



Cat[®] 302.2D

MINI HYDRAULIC EXCAVATOR

FEATURES:

- 2-way auxiliary as standard
- Automatic swing park brake
- Excellent service access
- Extending undercarriage
- Flat cab floor
- Powerful hydraulics
- Quick disconnects standard on auxiliary lines
- Spacious operator environment

Specifications

Engine

Engine Model	Yanmar 3TNV76	
Rated Net Power @ 2,200 rpm (ISO 9249)	13.2 kW	17.7 hp
Gross Power (ISO 14396)	17.9 kW	24.3 hp
Displacement	1116 cm ³	40 in ³

Weight

Transport Weight with Canopy	1945 kg	4,288 lb
Transport Weight with Cab	2055 kg	4,530 lb
Operating Weight with Cab	2135 kg	4,707 lb
Operating Weight with Canopy	2025 kg	4,464 lb

Travel System

Travel Speed	2.8 km/h-	1.74 mph-
	5.6 km/h	3.48 mph
Gradeability	30°/58%	

Service Refill Capacities

Fuel Tank Capacity	24 L	6.3 gal
Hydraulic Tank Capacity	21 L	5.5 gal

Operating Specifications

Stick Length – Standard	1050 mm	42 in
Stick Length – Long	1250 mm	49.2 in
Machine Overhang	314 mm	12 in

Blade

Width	1300 mm	4 ft 3 in
Height	300 mm	12 in
Dig Depth	360 mm	14 in
Lift Height	300 mm	12 in

Hydraulic System

Pump Flow @ 2,200 rpm	23.8 + 23.8	6.29 + 6.29
	+ 19.0 +	+5.0 +
	6.4 L/min	1.7 gal/min
Operating Pressure – Equipment	200 bar	2,900 psi
Operating Pressure – Travel	200 bar	2,900 psi
Operating Pressure – Swing	150 bar	2,176 psi
Auxiliary Circuits		
Primary	30 L/min at 170 bar	8 gal/min at 2,465 psi
Secondary	17 L/min at 200 bar	4.5 gal/min at 2,900 psi
Maximum Bucket Force	19.6 kN	4,406 lbf
Maximum Stick Force – Standard Stick	12.5 kN	2,810 lbf
Maximum Stick Force – Long Stick	11.0 kN	2,473 lbf

302.2D Mini Hydraulic Excavator

Lift Capacity at Ground Level – Undercarriage Extended

Lift Point Radius	2 m (6'7")				2.5 m (8'2")				3 m (9'10")				Maximum			
	Front		Side		Front		Side		Front		Side		Front		Side	
	kg	lb	kg	lb	kg	lb	kg	lb	kg	lb	kg	lb	kg	lb	kg	lb
Standard Stick	887	1,957	557	1,228	639	1,409	408	900	501	1,104	319	703	420	925	267	589
Long Stick	863	1,904	548	1,207	616	1,359	400	882	484	1,066	311	686	382	842	240	529

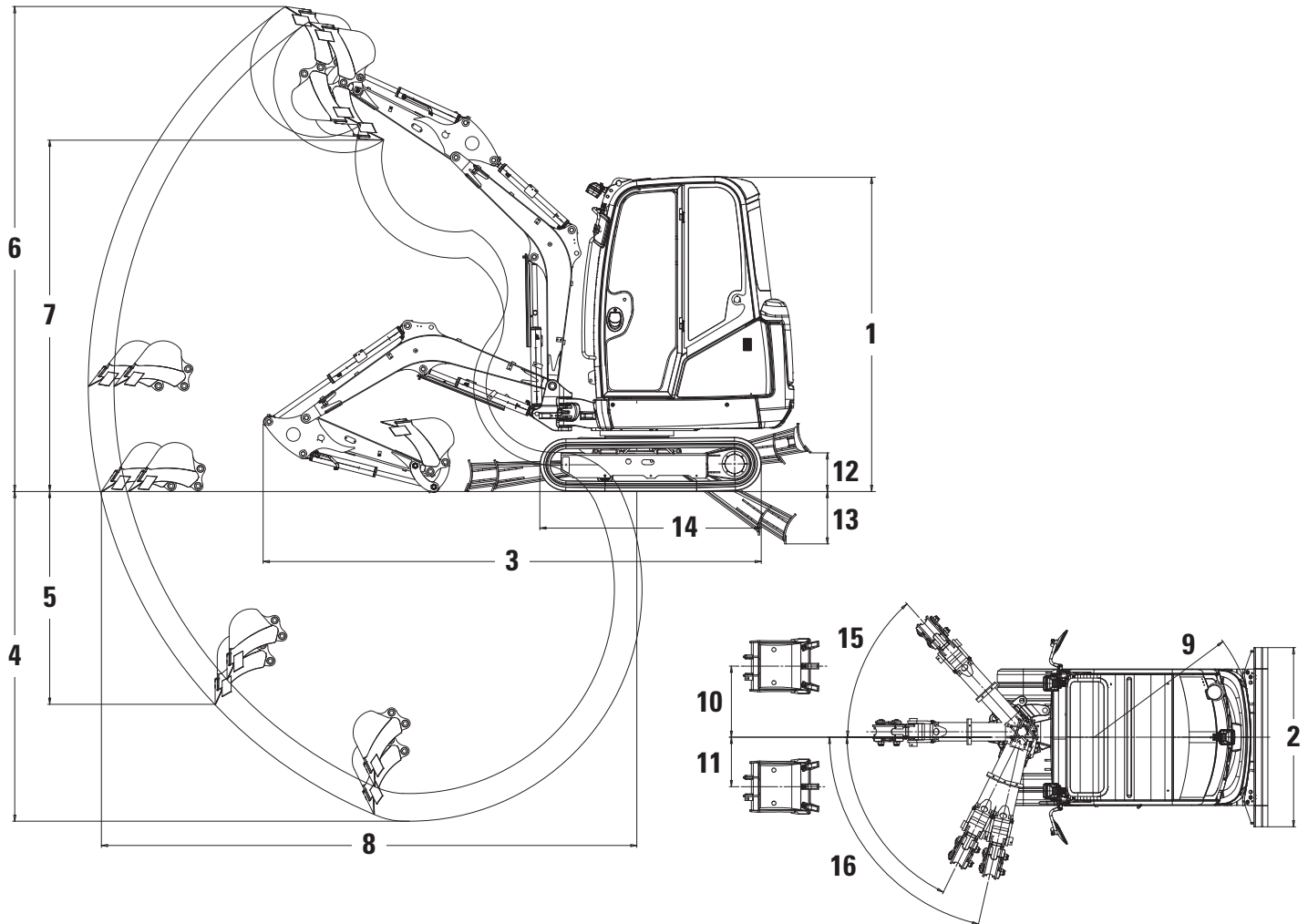
STANDARD EQUIPMENT (Standard equipment may vary. Consult your Cat dealer for details.)

- 250 mm rubber track
- Automatic swing park brake
- Canopy – ROPS and TOPS protection
- Dozer float
- Extending undercarriage
- Hammer/2 way lines
- Hydraulic oil cooler
- Maintenance free battery
- Retractable seat belt
- Standard length dozer blade
- Standard stick
- Suspension seat, vinyl covered
- Travel pedals
- Working light mounted to boom
- Working light on boom

OPTIONAL EQUIPMENT (Optional equipment may vary. Consult your Cat dealer for details.)

- 2nd auxiliary lines
- Auto engine idle
- Boom stick or dozer blade check valve
- Cab, radio ready – ROPS and TOPS protection
- Cab/canopy lights
- Joystick mounted proportional auxiliary control with flow adjust
- Long dozer blade
- Long stick
- Mirror pack
- Suspension seat, fabric covered
- Top cab guard to ISO 10262 (Level 1)

302.2D Mini Hydraulic Excavator



Dimensions (All dimensions are approximate.)

	Standard Stick		Long Stick	
1 Height	2295 mm	7'6"	2295 mm	7'6"
2 Width	990 mm	3'3"	990 mm	3'3"
Undercarriage width (retracted)	990 mm	3'3"	990 mm	3'3"
Undercarriage width (extended)	1300 mm	4'3"	1300 mm	4'3"
3 Transport length (arm lowered)	4050 mm	13'3"	4050 mm	13'3"
4 Maximum digging depth	2490 mm	8'2"	2690 mm	8'10"
5 Maximum vertical dig depth	1670 mm	5'6"	1850 mm	6'0"
6 Maximum dig height	3840 mm	12'6"	3930 mm	12'10"
7 Maximum dump height	2720 mm	8'11"	2810 mm	9'2"
8 Maximum reach at ground level	4130 mm	13'6"	4330 mm	14'2"
9 Tail swing radius	1170 mm	3'10"	1170 mm	3'10"
10 Maximum boom offset (RH)	520 mm	1'8"	520 mm	1'8"
11 Maximum boom offset (LH)	360 mm	1'2"	360 mm	1'2"
12 Maximum dozer lift height	220 mm	9"	220 mm	9"
13 Maximum dozer dig depth	360 mm	1'1"	360 mm	1'1"
14 Length of undercarriage (extending)	1710 mm	5'7"	1710 mm	5'7"
15 Boom swing angle (RH)	48°		48°	
16 Boom swing angle (LH)	77°/64°		77°/64°	

302.2D Mini Hydraulic Excavator

For more complete information on Cat® products, dealer services, and industry solutions, visit us on the web at www.cat.com

© 2014 Caterpillar
All Rights Reserved
Printed in U.S.A.

Materials and specifications are subject to change without notice. Featured machines in photos may include additional equipment. See your Cat dealer for available options.

CAT, CATERPILLAR, SAFETY.CAT.COM, their respective logos, "Caterpillar Yellow" and the "Power Edge" trade dress, as well as corporate and product identity used herein, are trademarks of Caterpillar and may not be used without permission.

AEHQ6946-01 (04-14)
Replaces AEHQ6946

