

# 340F L UHD

Ultra High Demolition Hydraulic Excavator



ORGANIZED BY  
**dari**  
**WORLD**  
**DEMOLITION**  
**AWARDS 2016**  
**SHORTLISTED**  
INNOVATION AWARD – PLANT & EQUIPMENT

## Engine

Engine Model	Cat® C9.3 ACERT™	
Power – ISO 14396	234 kW	318 PS
Power – ISO 9249	228 kW	310 PS

## Working Range

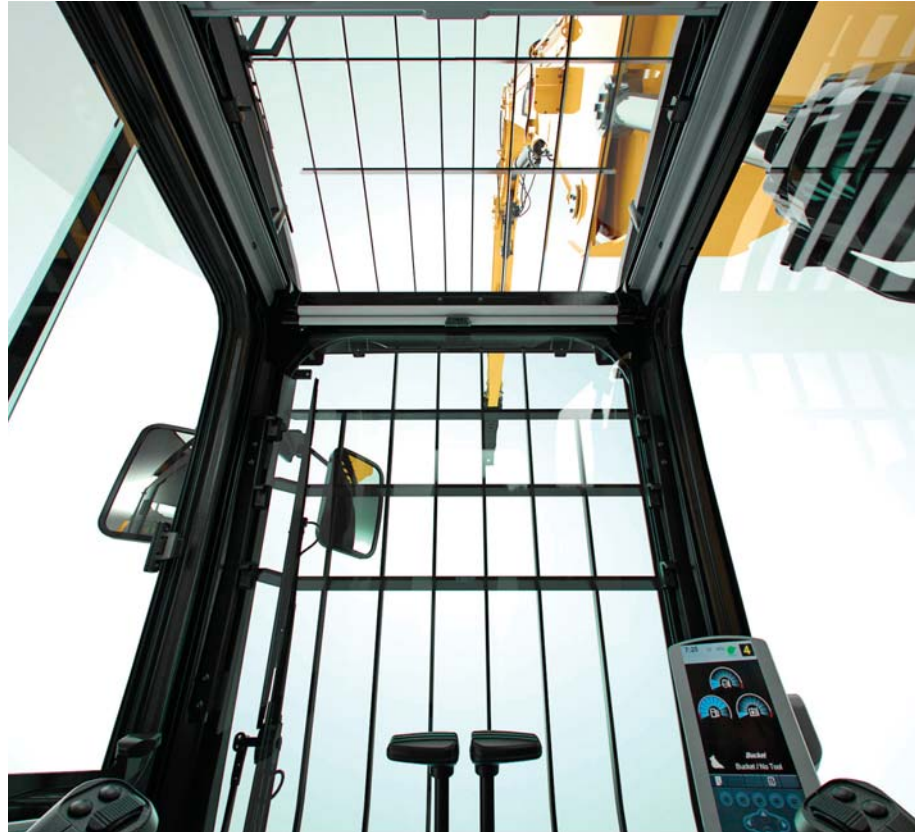
Maximum Pin Height	21 700 mm
Maximum Weight at Stick Nose	3600 kg

## Operating Weights

Minimum Weight	43 800 kg
Maximum Weight	50 900 kg

**The 340F L UHD reaches where other machines cannot, with its unique boom coupling system, you can easily and quickly install or remove high-reach and short front parts, making your demo jobs safer and faster. Where the real power comes in is through the hydraulic system. You can literally rip up and tear down structures all day long with a great deal of speed, precision, and control. Caterpillar offers the best-in-class work tool capability – bigger and more versatile work tools for bigger and more versatile demolition applications. When you add in a quiet and comfortable tilting cab, easy-to-reach maintenance points, and legendary product support, you simply won't find a better 40-ton choice for demolition.**

**Following are the built-in benefits that make the 340F L UHD an outstanding performer and an excellent choice for your line of work:**



### **Efficient Performance**

- The UHD front can reach up to 22 m and is capable of carrying up to 3.6 tons at 15 m horizontal reach.
- You can count on the economical and reliable C9.3 ACERT engine that meets EU Stage IV emission standards.
- Save fuel, resulting in reduced emissions, and extend your service intervals with built-in auto engine shutdown. Simply plug in the interval you want right in the monitor and let the machine do the rest.
- Reduce stress with SmartBoom™, which decreases vibrations transmitted to the machine and cab, especially during hammer work with the retrofit configuration.

### **Contents**

Key Features .....	2
Specifications .....	4
Standard Equipment .....	22
Optional Equipment .....	23

# Key Features

## Built-in benefits and available options

### Cat Technology and Safety

- Keep your tool in the right position at a safe working range with the exclusive Cat Active Stability Monitoring System™.
- Improve your safety with the new hydraulic pin system that locks front parts together.
- Maintain a clear field of view around the machine with the rearview and side-view cameras.
- Enhance your safety and visibility with reinforced glass with wipers and washers on the front and top windows. Both windows are protected with a falling object guard system.
- Make timely, fact-based decisions to maximize your efficiency and minimize your operating costs. Cat Product Link™ and VisionLink® provide remote access to your machine's location, hours, fuel consumption, idle time, events, and diagnostic codes.



### Comfort

- Enjoy quietness and comfort with the dedicated demolition cab.
- Position yourself for maximum comfort with fully adjustable seats and adjustable armrests and joysticks.
- Increase your upward visibility with the tiltable cab during high-reach demolition.

### Maintenance

- Reach routine service points like grease banks and fluid taps at ground level.
- Quickly drain hydraulic oil and engine oil with the QuickEvac™ system.
- Keep your machine productive with periodic S-O-S™ oil and cooling sampling.
- Protect your cooling cores and extend their cleaning intervals thanks to the dedicated screen fitted on the outside of the door to prevent small debris from entering inside the compartment.

### Versatility

- Easily and quickly install or remove high reach and short front parts with the new hydraulically-driven boom coupling system. Quickly release and re-connect all your hydraulic lines thanks to connectors that can be handled without any tooling.
- Maximize your machine's performance with a Cat quick coupler.
- Switch from one tool to another in minutes with the Caterpillar exclusive tool control – a system that remembers pressures and flows for up to 20 attachments.

### Durability

- Depend on your Cat machine giving you long service life in the most demanding applications – all backed by unmatched product support from your local Cat dealer.

# 340F L UHD Ultra High Demolition Hydraulic Excavator Specifications

## Engine

Engine Model	Cat C9.3 ACERT	
Gross Power – SAE J1995	238 kW	319 hp/324 PS
Engine Power – ISO 14396	234 kW	313 hp/318 PS
Net Power – ISO 9249	228 kW	306 hp/310 PS
Bore	115 mm	
Stroke	149 mm	
Displacement	9.3 L	

## Hydraulic System

Front Parts Option	UHD Fronts	Retrofit Fronts
Main System – Maximum Flow (total)	570 L/min	570 L/min
Swing System – Maximum Flow	139 L/min	279 L/min
Maximum Pressure – Equipment	35 000 kPa	35 000 kPa
Maximum Pressure – Equipment (heavy lift mode)	—	38 000 kPa
Maximum Pressure – Travel	35 000 kPa	35 000 kPa
Maximum Pressure – Swing	28 000 kPa	28 000 kPa
Pilot System – Maximum Flow	29 L/min	29 L/min
Pilot System – Maximum Pressure	4100 kPa	4100 kPa
Base Boom Cylinder – Bore	160 mm	160 mm
Base Boom Cylinder – Stroke	1357 mm	1357 mm
Intermediate Boom Cylinder – Bore	170 mm	—
Intermediate Boom Cylinder – Stroke	1738 mm	—
Stick Cylinder – Bore	170 mm	170 mm
Stick Cylinder – Stroke	1039 mm	1738 mm
CB Bucket Cylinder – Bore	140 mm	—
CB Bucket Cylinder – Stroke	1100 mm	—
DB Bucket Cylinder – Bore	—	150 mm
DB Bucket Cylinder – Stroke	—	1151 mm

## Drive

	UHD Fronts	Retrofit Fronts
Maximum Travel Speed	4.8 km/h	4.8 km/h
Maximum Drawbar Pull	285 kN	289 kN

## Swing Mechanism

	UHD Fronts	Retrofit Fronts
Swing Speed	4.4 rpm	8.9 rpm
Swing Torque	109 kN·m	109 kN·m

## Service Refill Capacities

	UHD Fronts	Retrofit Fronts
Fuel Tank Capacity	620 L	620 L
Cooling System	43 L	43 L
Engine Oil (with filter)	32 L	32 L
Swing Drive (each)	19 L	19 L
Final Drive (each)	8 L	8 L
Hydraulic System Oil Capacity (including tank)	420 L	380 L
Hydraulic Tank Oil	175 L	175 L
DEF Tank	41 L	41 L

## Track

Number of Shoes (each side)	49 pieces
Number of Track Rollers (each side)	9 pieces
Number of Carrier Rollers (each side)	2 pieces

## Sound Performance

Exterior Sound Power Level – ISO 6395:2008*	106 dB(A)
Operator Sound Pressure Level – ISO 6396:2008	73 dB(A)

\* As per European Union Directive 2000/14/EC as amended by 2005/88/EC.

- Hearing protection may be needed when operating with an open operator station and cab (when not properly maintained or doors/windows open) for extended periods or in a noisy environment.
- When properly installed and maintained, the cab offered by Caterpillar, when tested with doors and windows closed according to ANSI/SAE J1166 OCT98, meets OSHA and MSHA requirements for operator sound exposure limits in effect at time of manufacture.

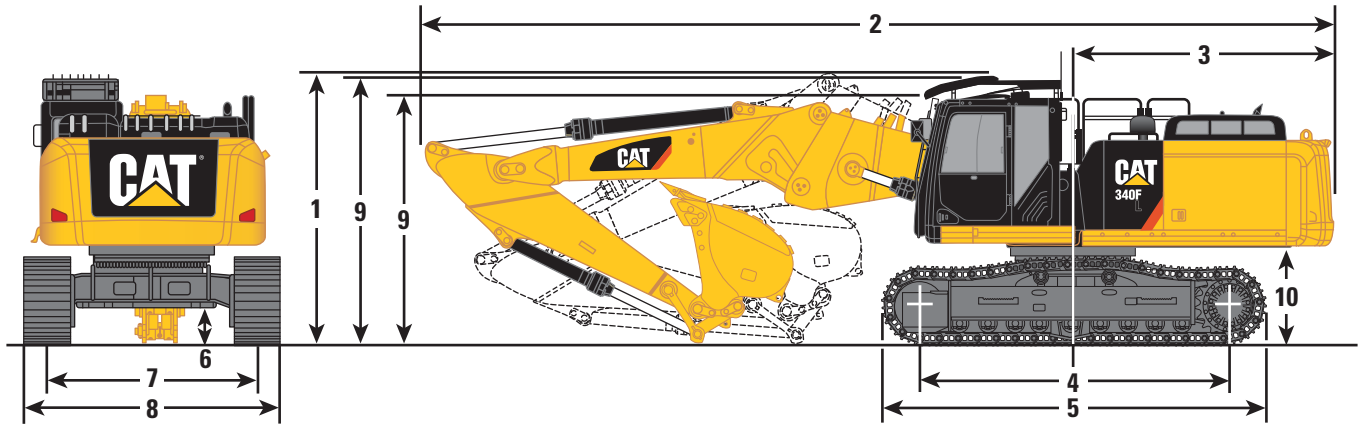
## Standards

Brakes	SAE J1026 APR90
Cab/FOGS	SAE J1356 FEB88 ISO 10262

# 340F L UHD Ultra High Demolition Hydraulic Excavator Specifications

## Dimensions

All dimensions are approximate.



Undercarriage Option	Long Undercarriage					
Boom Options	Retrofit Boom (Straight)			Retrofit Boom (Bent)		
Stick Options	R3.9DB	R3.2DB	R2.8DB	R3.9DB	R3.2DB	R2.8DB
<b>1</b> Shipping Height*	3990 mm	3760 mm	3780 mm	3990 mm	3890 mm	4060 mm
<b>2</b> Shipping Length	12 050 mm	12 110 mm	12 090 mm	11 420 mm	11 400 mm	11 460 mm
<b>3</b> Tail Swing Radius	3500 mm	3500 mm	3500 mm	3500 mm	3500 mm	3500 mm
<b>4</b> Length to Center of Rollers	4040 mm	4040 mm	4040 mm	4040 mm	4040 mm	4040 mm
<b>5</b> Track Length	5040 mm	5040 mm	5040 mm	5040 mm	5040 mm	5040 mm
<b>6</b> Ground Clearance*	515 mm	515 mm	515 mm	515 mm	515 mm	515 mm
Ground Clearance**	480 mm	480 mm	480 mm	480 mm	480 mm	480 mm
<b>7</b> Track Gauge	2590 mm	2590 mm	2590 mm	2590 mm	2590 mm	2590 mm
<b>8</b> Track Width						
600 mm Shoes	3190 mm	3190 mm	3190 mm	3190 mm	3190 mm	3190 mm
700 mm Shoes	3290 mm	3290 mm	3290 mm	3290 mm	3290 mm	3290 mm
<b>9</b> Cab Height	3390 mm	3390 mm	3390 mm	3390 mm	3390 mm	3390 mm
Cab Height with Top Guard	3520 mm	3520 mm	3520 mm	3520 mm	3520 mm	3520 mm
<b>10</b> Counterweight Clearance**	1230 mm	1230 mm	1230 mm	1230 mm	1230 mm	1230 mm
Bucket Type	DB1650HD	DB1650HD	DB1650HD	DB1650HD	DB1650HD	DB1650HD
Bucket Capacity	2.12 m <sup>3</sup>	2.12 m <sup>3</sup>	2.12 m <sup>3</sup>	2.12 m <sup>3</sup>	2.12 m <sup>3</sup>	2.12 m <sup>3</sup>
Bucket Tip Radius	1779 mm	1779 mm	1779 mm	1779 mm	1779 mm	1779 mm

\*Including shoe lug height.

\*\*Without shoe lug height.

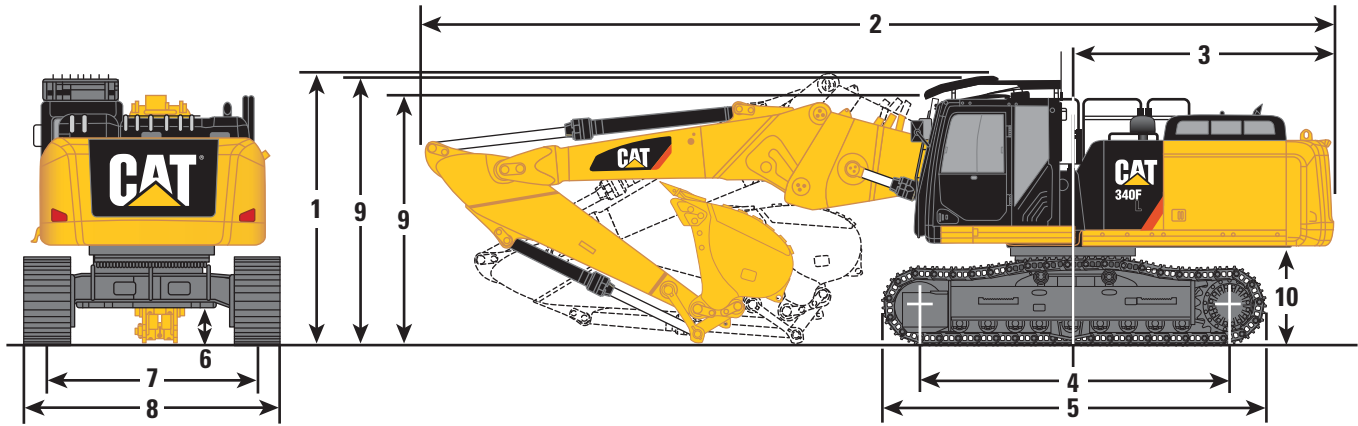
Dimensions may vary depending on bucket selection.



# 340F L UHD Ultra High Demolition Hydraulic Excavator Specifications

## Dimensions

All dimensions are approximate.



Undercarriage Option	Long Hydraulic Variable Gauge					
Boom Options	Retrofit Boom (Straight)			Retrofit Boom (Bent)		
Stick Options	R3.9DB	R3.2DB	R2.8DB	R3.9DB	R3.2DB	R2.8DB
<b>1</b> Shipping Height*	4010 mm	3780 mm	3810 mm	3990 mm	3900 mm	4080 mm
<b>2</b> Shipping Length	12 060 mm	12 110 mm	12 100 mm	11 400 mm	11 380 mm	11 450 mm
<b>3</b> Tail Swing Radius	3500 mm	3500 mm	3500 mm	3500 mm	3500 mm	3500 mm
<b>4</b> Length to Center of Rollers	4040 mm	4040 mm	4040 mm	4040 mm	4040 mm	4040 mm
<b>5</b> Track Length	5040 mm	5040 mm	5040 mm	5040 mm	5040 mm	5040 mm
<b>6</b> Ground Clearance*	485 mm	485 mm	485 mm	485 mm	485 mm	485 mm
Ground Clearance**	450 mm	450 mm	450 mm	450 mm	450 mm	450 mm
<b>7</b> Track Gauge						
Retracted	2390 mm	2390 mm	2390 mm	2390 mm	2390 mm	2390 mm
Extended	2820 mm	2820 mm	2820 mm	2820 mm	2820 mm	2820 mm
<b>8</b> Track Width						
600 mm Shoes – Retracted	2990 mm	2990 mm	2990 mm	2990 mm	2990 mm	2990 mm
600 mm Shoes – Extended	3420 mm	3420 mm	3420 mm	3420 mm	3420 mm	3420 mm
700 mm Shoes – Retracted	3090 mm	3090 mm	3090 mm	3090 mm	3090 mm	3090 mm
700 mm Shoes – Extended	3520 mm	3520 mm	3520 mm	3520 mm	3520 mm	3520 mm
<b>9</b> Cab Height	3440 mm	3440 mm	3440 mm	3440 mm	3440 mm	3440 mm
Cab Height with Top Guard	3570 mm	3570 mm	3570 mm	3570 mm	3570 mm	3570 mm
<b>10</b> Counterweight Clearance**	1270 mm	1270 mm	1270 mm	1270 mm	1270 mm	1270 mm
Bucket Type	DB1650HD	DB1650HD	DB1650HD	DB1650HD	DB1650HD	DB1650HD
Bucket Capacity	2.12 m <sup>3</sup>	2.12 m <sup>3</sup>	2.12 m <sup>3</sup>	2.12 m <sup>3</sup>	2.12 m <sup>3</sup>	2.12 m <sup>3</sup>
Bucket Tip Radius	1779 mm	1779 mm	1779 mm	1779 mm	1779 mm	1779 mm

\*Including shoe lug height.

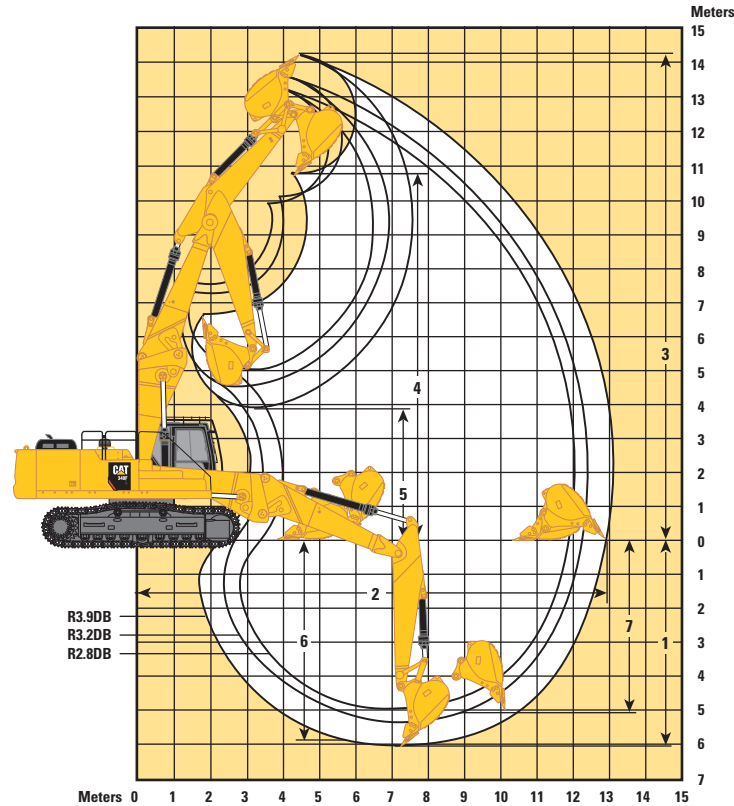
\*\*Without shoe lug height.

Dimensions may vary depending on bucket selection.

# 340F L UHD Ultra High Demolition Hydraulic Excavator Specifications

## Working Ranges

All dimensions are approximate.



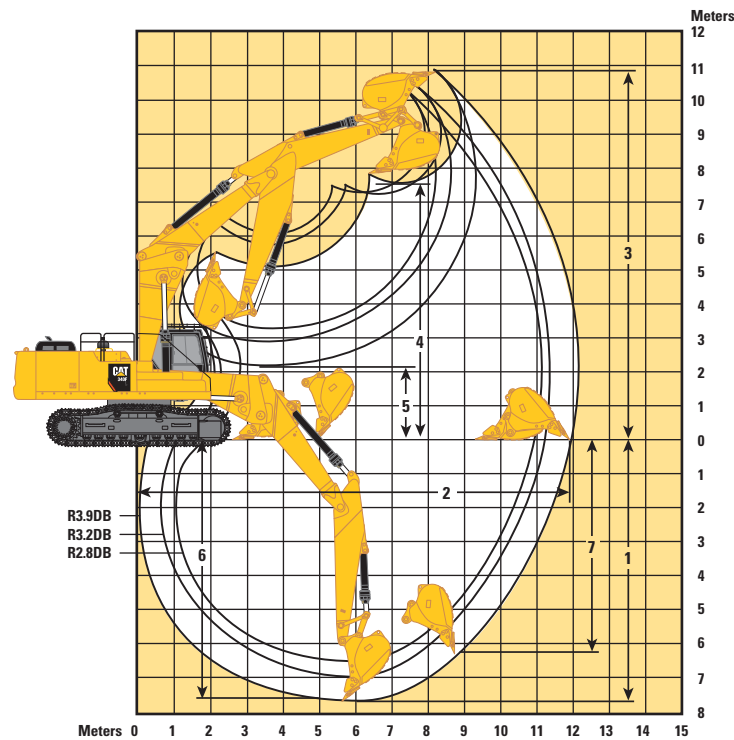
Boom Option	Retrofit Boom (Straight)					
Stick Options	R3.9DB	R3.2DB	R2.8DB	R3.9DB	R3.2DB	R2.8DB
Undercarriage Options	Long			Long Hydraulic Variable Gauge		
1 Maximum Digging Depth	6040 mm	5340 mm	4940 mm	6090 mm	5390 mm	4990 mm
2 Maximum Reach at Ground Level	12 930 mm	12 210 mm	11 880 mm	12 940 mm	12 220 mm	11 890 mm
Maximum Radius of Working Equipment	13 100 mm	12 390 mm	12 060 mm	13 100 mm	12 390 mm	12 060 mm
3 Maximum Cutting Height	14 250 mm	13 630 mm	13 430 mm	14 200 mm	13 570 mm	13 370 mm
4 Maximum Loading Height	10 710 mm	10 090 mm	9870 mm	10 660 mm	10 030 mm	9820 mm
5 Minimum Loading Height	2660 mm	3440 mm	3270 mm	2610 mm	3390 mm	3220 mm
6 Maximum Depth Cut for 2440 mm Level Bottom	5910 mm	5190 mm	4780 mm	5960 mm	5240 mm	4830 mm
7 Maximum Vertical Wall Digging Depth	5140 mm	4480 mm	4110 mm	5190 mm	4540 mm	4160 mm
Bucket Type	DB1650HD	DB1650HD	DB1650HD	DB1650HD	DB1650HD	DB1650HD
Bucket Capacity	2.12 m <sup>3</sup>	2.12 m <sup>3</sup>	2.12 m <sup>3</sup>	2.12 m <sup>3</sup>	2.12 m <sup>3</sup>	2.12 m <sup>3</sup>
Bucket Tip Radius	1779 mm	1779 mm	1779 mm	1779 mm	1779 mm	1779 mm

Dimensions may vary depending on bucket selection.

# 340F L UHD Ultra High Demolition Hydraulic Excavator Specifications

## Working Ranges

All dimensions are approximate.



Boom Option	Retrofit Boom (Bent)					
	R3.9DB	R3.2DB	R2.8DB	R3.9DB	R3.2DB	R2.8DB
<b>Stick Options</b>						
<b>Undercarriage Options</b>	Long			Hydraulic Variable Gauge		
1 Maximum Digging Depth	7600 mm	6900 mm	6500 mm	7660 mm	6960 mm	6560 mm
2 Maximum Reach at Ground Level	11 940 mm	11 240 mm	10 950 mm	11 950 mm	11 250 mm	10 960 mm
Maximum Radius of Working Equipment	12 120 mm	11 440 mm	11 150 mm	12 120 mm	11 440 mm	11 150 mm
3 Maximum Cutting Height	10 860 mm	10 460 mm	10 540 mm	10 810 mm	10 410 mm	10 490 mm
4 Maximum Loading Height	7650 mm	7290 mm	7300 mm	7600 mm	7240 mm	7250 mm
5 Minimum Loading Height	2200 mm	2900 mm	3300 mm	2150 mm	2850 mm	3250 mm
6 Maximum Depth Cut for 2440 mm Level Bottom	7470 mm	6750 mm	6340 mm	7520 mm	6800 mm	6390 mm
7 Maximum Vertical Wall Digging Depth	6470 mm	5650 mm	5630 mm	6520 mm	5700 mm	5680 mm
Bucket Type	DB1650HD	DB1650HD	DB1650HD	DB1650HD	DB1650HD	DB1650HD
Bucket Capacity	2.12 m <sup>3</sup>	2.12 m <sup>3</sup>	2.12 m <sup>3</sup>	2.12 m <sup>3</sup>	2.12 m <sup>3</sup>	2.12 m <sup>3</sup>
Bucket Tip Radius	1779 mm	1779 mm	1779 mm	1779 mm	1779 mm	1779 mm

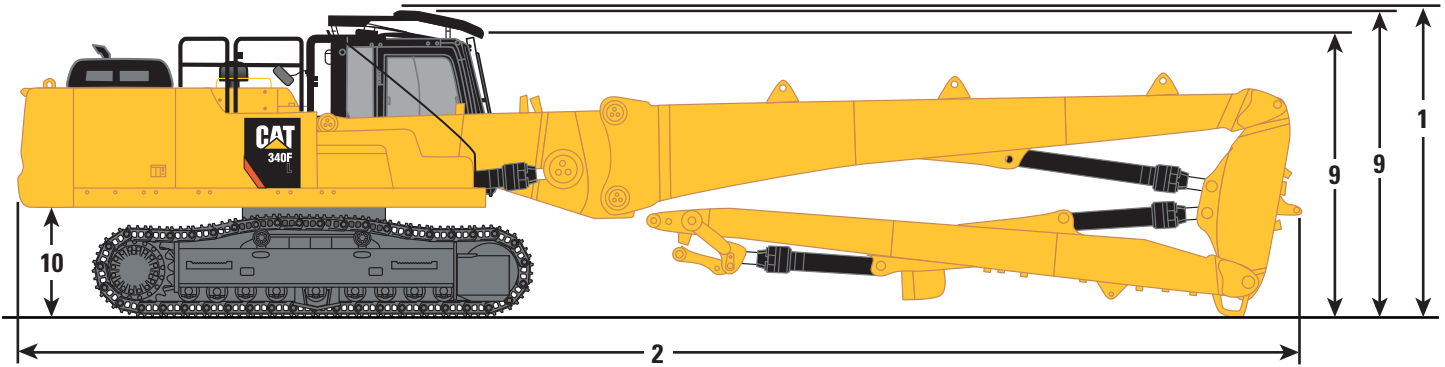
Dimensions may vary depending on bucket selection.



# 340F L UHD Ultra High Demolition Hydraulic Excavator Specifications

## Dimensions

All dimensions are approximate.



Undercarriage Option	Long Undercarriage	Long Hydraulic Variable Gauge
<b>Boom Options</b>	<b>UHD Boom</b>	<b>UHD Boom</b>
<b>Stick Options</b>	<b>UHD Stick</b>	<b>UHD Stick</b>
<b>1</b> Shipping Height*	3520 mm	3570 mm
<b>2</b> Shipping Length	15 180 mm	15 180 mm
<b>3</b> Tail Swing Radius	3500 mm	3500 mm
<b>4</b> Length to Center of Rollers	4040 mm	4040 mm
<b>5</b> Track Length	5040 mm	5040 mm
<b>6</b> Ground Clearance*	515 mm	485 mm
Ground Clearance**	480 mm	450 mm
<b>7</b> Track Gauge	2590 mm	
Retracted		2390 mm
Extended		2820 mm
<b>8</b> Track Width		
600 mm Shoes	3190 mm	N/A
600 mm Shoes – Retracted	N/A	2990 mm
600 mm Shoes – Extended	N/A	3420 mm
700 mm Shoes	3290 mm	N/A
700 mm Shoes – Retracted	N/A	3090 mm
700 mm Shoes – Extended	N/A	3520 mm
<b>9</b> Cab Height	3390 mm	3440 mm
Cab Height with Top Guard	3520 mm	3570 mm
<b>10</b> Counterweight Clearance**	1230 mm	1270 mm

\*Including shoe lug height.

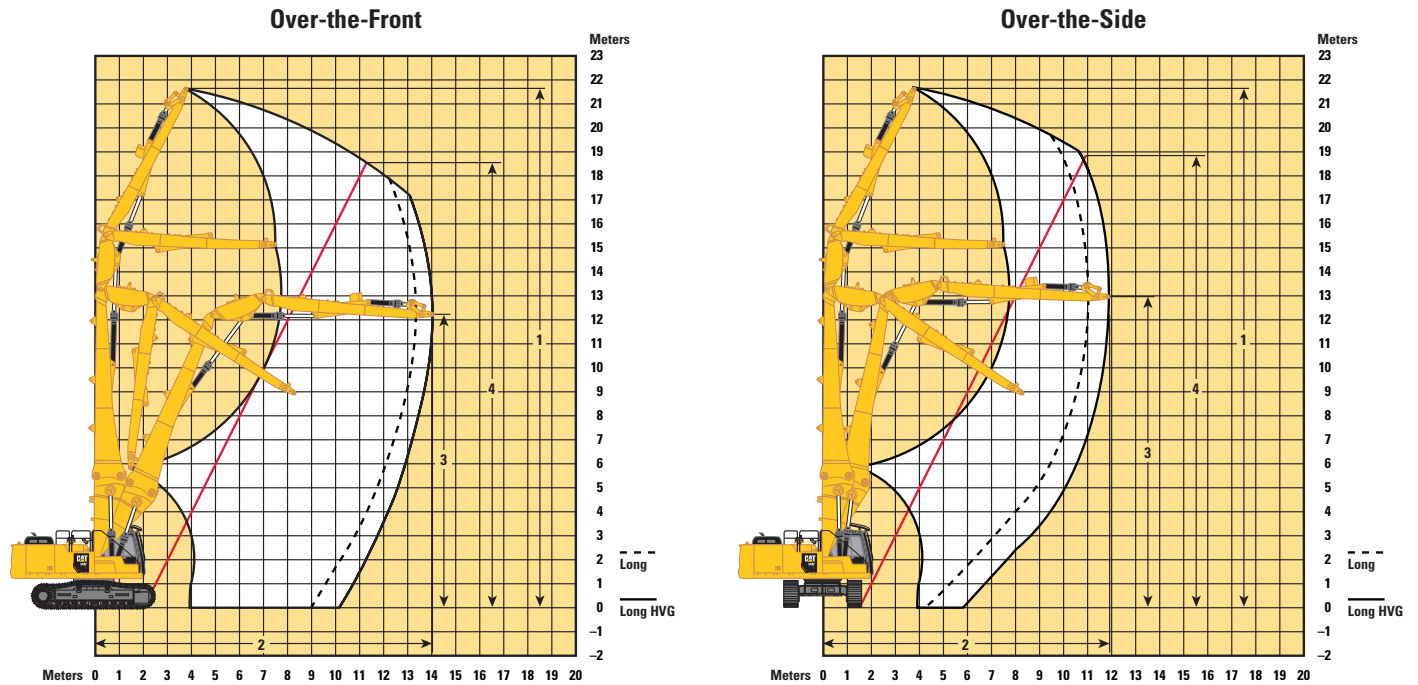
\*\*Without shoe lug height.

Dimensions may vary depending on bucket selection.

# 340F L UHD Ultra High Demolition Hydraulic Excavator Specifications

## Working Ranges

All dimensions are approximate.



Boom Type	UHD Boom Nose and UHD Foreboom	
	UHD Stick	
Stick Type	Long	Long Hydraulic Variable Gauge
Undercarriage Options		
Over-the-Front		
1 Maximum Pin Height at Stick Nose	21 650 mm	21 700 mm
2 Maximum Reach at Stick Nose	13 350 mm	14 040 mm
3 Maximum Height at Stick Nose in Maximum Reach Position	12 440 mm	12 160 mm
4 Maximum Working Pin Height at Stick Nose	18 550 mm	18 590 mm
Maximum Weight at Stick Nose	3600 kg	3600 kg
Over-the-Side		
1 Maximum Pin Height at Stick Nose	21 650 mm	21 700 mm
2 Maximum Reach at Stick Nose	11 030 mm	11 960 mm
3 Maximum Height at Stick Nose in Maximum Reach Position	13 080 mm	12 910 mm
4 Maximum Working Pin Height at Stick Nose	18 860 mm	18 850 mm
Maximum Weight at Stick Nose	3600 kg	3600 kg

# 340F L UHD Ultra High Demolition Hydraulic Excavator Specifications

## Operating Weights and Ground Pressures

Boom	Stick	Bucket	700 mm Triple Grouser Shoes		600 mm HD Triple Grouser Shoes		600 mm Double Grouser Shoes	
			kg	kPa	kg	kPa	kg	kPa
<b>Long Undercarriage</b>								
UHD*	UHD	—	45 100	72.0	45 500	84.7	45 600	84.7
Retrofit**	HD R3.9DB	2.12 m <sup>3</sup>	44 000	70.3	44 300	82.4	44 400	82.4
	HD R3.2DB	2.12 m <sup>3</sup>	43 800	70.0	44 200	82.2	44 300	82.2
	HD 2.8DB	2.12 m <sup>3</sup>	43 800	70.0	44 100	82.1	44 200	82.1
<b>Long Hydraulic Variable Gauge</b>								
UHD*	UHD	—	50 400	80.5	50 800	94.5	50 900	94.5
Retrofit**	HD R3.9DB	2.12 m <sup>3</sup>	49 300	78.7	49 600	92.3	49 700	92.3
	HD R3.2DB	2.12 m <sup>3</sup>	49 100	78.4	49 500	92.1	49 600	92.1
	HD 2.8DB	2.12 m <sup>3</sup>	49 100	78.4	49 400	91.9	49 600	92.1

\*With 0.5 mt Quick Coupler, without work tool.

\*\*In bent or straight position, with a 2.12 m<sup>3</sup> bucket (1800 kg).

## Bucket and Stick Forces

Boom Options	Retrofit Boom (Straight)			Retrofit Boom (Bent)		
	R3.9DB	R3.2DB	R2.8DB	R3.9DB	R3.2DB	R2.8DB
<b>Stick Options</b>						
General Duty						
Bucket Digging Force (ISO)	198 kN	198 kN	198 kN	198 kN	198 kN	198 kN
Stick Digging Force (ISO)	143 kN	164 kN	182 kN	143 kN	164 kN	182 kN

# 340F L UHD Ultra High Demolition Hydraulic Excavator Specifications

## Major Component Weights

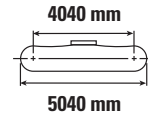
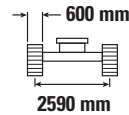
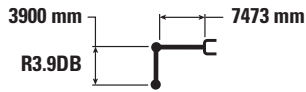
	kg
Undercarriage (without track)	
Long Undercarriage	9100
Long Hydraulic Variable Gauge (HVG) Undercarriage	14 400
Upper Structure (without front linkage)	11 000
Counterweight	8500
Base Boom and UHD Boom Nose (includes lines, pins, base boom cylinder and intermediate boom cylinder)	7200
UHD Fore Boom (includes lines and stick cylinder)	1400
Base Boom and Retrofit Boom Nose (includes lines, pins, base boom cylinder and stick cylinder)	6600
UHD Stick (includes lines, pins, bucket cylinder and coupler)	3000
Stick (includes lines, pins, bucket cylinder)	
HD R3.2 Stick	2000
HD R2.8 Stick	1900
HD R3.9 Stick	2100
Track Shoes	
700 mm Triple Grouser	4400
600 mm Triple Grouser HD	4700
600 mm Double Grouser	4800

Base machine includes 75 kg operator weight, 90% fuel weight, and undercarriage with center guard.

# 340F L UHD Ultra High Demolition Hydraulic Excavator Specifications

## Retrofit Boom (straight position) – with Bucket Linkages, without Bucket, Heavy Lift: On

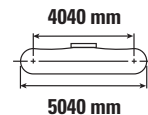
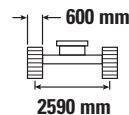
Long Undercarriage



Boom Length	Unit	4500 mm		6000 mm		7500 mm		9000 mm		10 500 mm		mm		
12 000 mm	kg											*8850	*8850	5280
10 500 mm	kg			*10 000	*10 000							*6950	*6950	7490
9000 mm	kg			*9550	*9550	*9550	9150					*6200	*6200	8920
7500 mm	kg			*9450	*9450	*9950	9050	*9200	6550			*5800	5400	9910
6000 mm	kg	*10 050	*10 050	*10 850	*10 850	*11 050	8700	9950	6400	*6500	4800	*5600	4700	10 610
4500 mm	kg	*19 700	17 950	*14 800	11 600	*12 050	8250	9700	6150	7550	4750	*5550	4300	11 050
3000 mm	kg			*15 800	10 650	12 400	7750	9400	5900	7400	4600	*5600	4050	11 280
1500 mm	kg			*16 150	9850	11 900	7300	9100	5600	7250	4450	*5800	3950	11 310
0 mm	kg	*8800	*8800	*15 600	9400	11 550	6950	8900	5400	7150	4350	*6150	4000	11 130
-1500 mm	kg	*12 750	*12 750	*14 150	9250	11 400	6800	8800	5300	*6800	4350	*6250	4250	10 740
-3000 mm	kg	*13 700	*13 700	*11 850	9250	*9700	6800	*7550	5350			*5350	4700	10 090

## Retrofit Boom (straight position) – with Bucket Linkages, without Bucket, Heavy Lift: On

Long Undercarriage



Boom Length	Unit	4500 mm		6000 mm		7500 mm		9000 mm		10 500 mm		mm		
10 500 mm	kg			*11 100	*11 100							*9200	*9200	6370
9000 mm	kg			*12 150	*12 150	*10 700	8850					*8000	7800	8000
7500 mm	kg			*12 550	*12 550	*11 700	8800	*8400	6350			*7450	6200	9100
6000 mm	kg	*16 800	*16 800	*14 450	12 100	*12 000	8500	9850	6300			*7200	5300	9850
4500 mm	kg			*15 450	11 250	*12 450	8100	9600	6100			*7150	4800	10 330
3000 mm	kg			*16 200	10 350	12 250	7600	9350	5850	7350	4550	*7300	4500	10 580
1500 mm	kg			*16 150	9700	11 850	7200	9100	5600	7250	4500	7150	4400	10 600
0 mm	kg			*15 100	9400	11 550	6950	8950	5450			7300	4500	10 410
-1500 mm	kg	*13 300	*13 300	*13 200	9350	*10 850	6900	*8600	5400			*6650	4800	9990
-3000 mm	kg			*10 500	9450	*8700	6950	*6250	5550			*6200	5500	9030



ISO 10567



\*Indicates that the load is limited by hydraulic lifting capacity rather than tipping load. The above loads are in compliance with hydraulic excavator lift capacity standard ISO 10567:2007. They do not exceed 87% of hydraulic lifting capacity or 75% of tipping load. Weight of all lifting accessories must be deducted from the above lifting capacities. Lifting capacities are based on the machine standing on a firm, uniform supporting surface. The use of a work tool attachment point to handle/lift objects, could affect the machine lift performance.

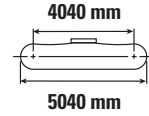
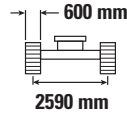
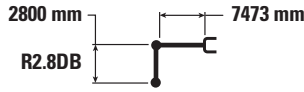
Lift capacity stays with ±5% for all available track shoes.

Always refer to the appropriate Operation and Maintenance Manual for specific product information.

# 340F L UHD Ultra High Demolition Hydraulic Excavator Specifications

## Retrofit Boom (straight position) – with Bucket Linkages, without Bucket, Heavy Lift: On

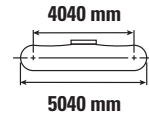
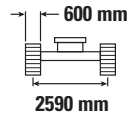
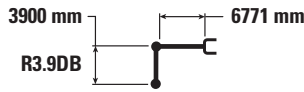
Long Undercarriage



Boom Length	Unit	4500 mm		6000 mm		7500 mm		9000 mm		Diagram		mm
		Diagram	Diagram	Diagram	Diagram	Diagram	Diagram	Diagram	Diagram	Diagram	Diagram	
10 500 mm	kg	*15 500	*15 500							*12 250	*12 250	5790
9000 mm	kg			*13 800	12 800	*10 900	8550			*10 300	8450	7550
7500 mm	kg	*13 250	*13 250	*14 050	12 500	*12 000	8650			*9450	6550	8710
6000 mm	kg	*19 200	18 600	*14 800	11 900	*12 250	8400	9700	6200	8850	5600	9490
4500 mm	kg			*15 750	11 000	*12 650	7950	9550	6000	8050	5000	9990
3000 mm	kg			*16 300	10 150	12 150	7500	9300	5800	7600	4750	10 240
1500 mm	kg			*15 950	9600	11 750	7150	9050	5600	7500	4650	10 270
0 mm	kg			*14 600	9350	11 550	6950	8950	5450	*7550	4750	10 070
-1500 mm	kg			*12 500	9350	*10 400	6900	*8050	5450	*6550	5050	9640
-3000 mm	kg					*7950	7050			*6950	6300	8180

## Retrofit Boom (bent position) – with Bucket Linkages, without Bucket, Heavy Lift: On

Long Undercarriage



Boom Length	Unit	3000 mm		4500 mm		6000 mm		7500 mm		9000 mm		Diagram		mm
		Diagram	Diagram	Diagram	Diagram	Diagram	Diagram	Diagram	Diagram	Diagram	Diagram	Diagram		
9000 mm	kg							*6600	*6600			*6000	*6000	7630
7500 mm	kg											*5650	*5650	8780
6000 mm	kg							*9650	9450	*8150	6850	*5550	*5550	9560
4500 mm	kg					*12 100	*12 100	*10 400	9050	*9350	6650	*5600	5400	10 050
3000 mm	kg			*18 600	18 050	*13 800	11 850	*11 300	8500	*9800	6350	*5800	5000	10 300
1500 mm	kg			*21 150	16 100	*15 250	10 850	*12 100	7950	9550	6050	*6200	4800	10 330
0 mm	kg	*7300	*7300	*20 400	15 000	*16 050	10 100	12 100	7450	9250	5750	*6800	4800	10 130
-1500 mm	kg	*12 000	*12 000	*21 550	14 500	*16 100	9650	11 750	7150	9000	5550	*7750	4950	9700
-3000 mm	kg	*17 550	*17 550	*19 950	14 400	*15 250	9450	11 600	6950			8950	5450	9000



ISO 10567



\*Indicates that the load is limited by hydraulic lifting capacity rather than tipping load. The above loads are in compliance with hydraulic excavator lift capacity standard ISO 10567:2007. They do not exceed 87% of hydraulic lifting capacity or 75% of tipping load. Weight of all lifting accessories must be deducted from the above lifting capacities. Lifting capacities are based on the machine standing on a firm, uniform supporting surface. The use of a work tool attachment point to handle/lift objects, could affect the machine lift performance.

Lift capacity stays with ±5% for all available track shoes.

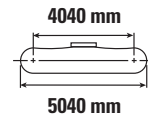
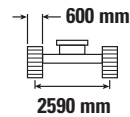
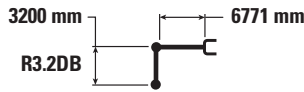
Always refer to the appropriate Operation and Maintenance Manual for specific product information.



# 340F L UHD Ultra High Demolition Hydraulic Excavator Specifications

## Retrofit Boom (bent position) – with Bucket Linkages, without Bucket, Heavy Lift: On

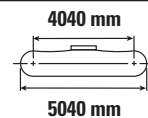
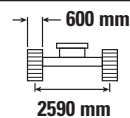
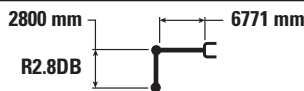
Long Undercarriage



Boom Length	Unit	3000 mm		4500 mm		6000 mm		7500 mm		9000 mm		mm		
		Diagram	Diagram	Diagram	Diagram	Diagram	Diagram	Diagram	Diagram	Diagram	Diagram	Diagram	Diagram	
9000 mm	kg											*7750	*7750	6670
7500 mm	kg							*9800	9400			*7250	*7250	7960
6000 mm	kg							*10 450	9200			*7150	6900	8820
4500 mm	kg			*16 900	*16 900	*13 100	12 450	*11 100	8800	*9900	6500	*7250	6050	9350
3000 mm	kg			*20 200	17 100	*14 650	11 450	*11 900	8300	9750	6250	*7600	5550	9620
1500 mm	kg			*17 950	15 500	*15 850	10 600	12 500	7800	9450	5950	*8150	5350	9650
0 mm	kg			*19 150	14 750	*16 300	10 000	12 050	7400	9200	5700	8600	5350	9440
-1500 mm	kg	*13 000	*13 000	*20 800	14 500	*15 900	9650	11 750	7150			9100	5600	8970
-3000 mm	kg	*20 600	*20 600	*18 700	14 550	*14 600	9550	*11 450	7050			*10 000	6300	8200

## Retrofit Boom (bent position) – with Bucket Linkages, without Bucket, Heavy Lift: On

Long Undercarriage



Boom Length	Unit	3000 mm		4500 mm		6000 mm		7500 mm		9000 mm		mm		
		Diagram	Diagram	Diagram	Diagram	Diagram	Diagram	Diagram	Diagram	Diagram	Diagram	Diagram	Diagram	
9000 mm	kg											*9950	*9950	6250
7500 mm	kg							*10 200	9150			*9200	8900	7610
6000 mm	kg					*12 250	*12 250	*10 850	9050			*8950	7200	8500
4500 mm	kg			*17 850	*17 850	*13 600	12 200	*11 450	8650	*9650	6350	*9000	6300	9050
3000 mm	kg			*19 650	16 500	*15 050	11 250	*12 150	8150	9650	6150	9100	5750	9330
1500 mm	kg					*16 050	10 400	12 350	7700	9400	5900	8850	5550	9360
0 mm	kg			*16 500	14 650	*16 300	9900	11 950	7350	9200	5700	8950	5550	9140
-1500 mm	kg	*11 750	*11 750	*20 150	14 500	*15 650	9600	11 750	7150			9600	5900	8660
-3000 mm	kg	*21 400	*21 400	*17 750	14 600	*14 100	9600	*10 900	7150			*10 000	6700	7860



ISO 10567



\*Indicates that the load is limited by hydraulic lifting capacity rather than tipping load. The above loads are in compliance with hydraulic excavator lift capacity standard ISO 10567:2007. They do not exceed 87% of hydraulic lifting capacity or 75% of tipping load. Weight of all lifting accessories must be deducted from the above lifting capacities. Lifting capacities are based on the machine standing on a firm, uniform supporting surface. The use of a work tool attachment point to handle/lift objects, could affect the machine lift performance.

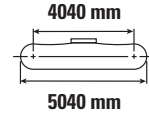
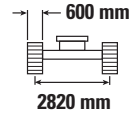
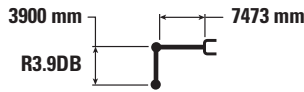
Lift capacity stays with ±5% for all available track shoes.

Always refer to the appropriate Operation and Maintenance Manual for specific product information.

# 340F L UHD Ultra High Demolition Hydraulic Excavator Specifications

## Retrofit Boom (straight position) – with Bucket Linkages, without Bucket, Heavy Lift: On

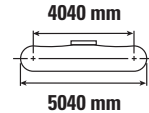
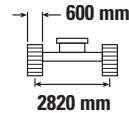
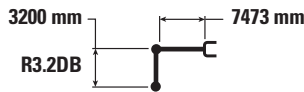
Long Hydraulic Variable Undercarriage



Boom Length	Unit	4500 mm		6000 mm		7500 mm		9000 mm		10 500 mm		mm		
12 000 mm	kg											*8750	*8750	5380
10 500 mm	kg			*10 000	*10 000	*7200	*7200					*6950	*6950	7550
9000 mm	kg			*9550	*9550	*9600	*9600					*6150	*6150	8960
7500 mm	kg			*9500	*9500	*10 000	*10 000	*9250	7950			*5800	*5800	9940
6000 mm	kg	*10 200	*10 200	*10 950	*10 950	*11 100	10 450	*10 000	7800	*6650	5950	*5600	*5600	10 630
4500 mm	kg	*19 750	*19 750	*14 850	14 000	*12 050	10 000	*10 250	7550	8450	5850	*5550	5350	11 070
3000 mm	kg			*15 850	13 000	*12 550	9450	*10 400	7250	8300	5700	*5650	5100	11 290
1500 mm	kg			*16 150	12 250	*12 700	9000	10 250	7000	8150	5600	*5850	5000	11 300
0 mm	kg	*8950	*8950	*15 600	11 800	*12 350	8700	*10 000	6800	*8000	5500	*6150	5100	11 120
-1500 mm	kg	*12 950	*12 950	*14 100	11 600	*11 400	8550	*9150	6700	*6750	5450	*6200	5350	10 720
-3000 mm	kg	*13 600	*13 600	*11 800	11 650	*9650	8550	*7450	6700			*5350	*5350	10 040

## Retrofit Boom (straight position) – with Bucket Linkages, without Bucket, Heavy Lift: On

Long Hydraulic Variable Undercarriage



Boom Length	Unit	4500 mm		6000 mm		7500 mm		9000 mm		10 500 mm		mm		
10 500 mm	kg			*11 250	*11 250							*9150	*9150	6440
9000 mm	kg			*12 150	*12 150	*10 850	10 600					*7950	*7950	8050
7500 mm	kg			*12 550	*12 550	*11 700	10 550	*8650	7700			*7400	*7400	9130
6000 mm	kg	*17 350	*17 350	*14 450	*14 450	*12 050	10 250	*10 400	7650			*7200	6500	9870
4500 mm	kg			*15 500	13 600	*12 500	9800	*10 500	7450			*7150	5950	10 350
3000 mm	kg			*16 200	12 700	*12 800	9350	10 450	7200	8300	5700	*7300	5650	10 580
1500 mm	kg			*16 100	12 050	*12 750	8950	10 200	6950	8200	5600	*7600	5550	10 600
0 mm	kg			*15 050	11 750	*12 100	8700	*9750	6800			*7450	5650	10 400
-1500 mm	kg	*13 550	*13 550	*13 100	11 700	*10 800	8600	*8550	6800			*6600	6000	9970
-3000 mm	kg			*10 400	*10 400	*8600	*8600					*6250	*6250	8960



ISO 10567



\*Indicates that the load is limited by hydraulic lifting capacity rather than tipping load. The above loads are in compliance with hydraulic excavator lift capacity standard ISO 10567:2007. They do not exceed 87% of hydraulic lifting capacity or 75% of tipping load. Weight of all lifting accessories must be deducted from the above lifting capacities. Lifting capacities are based on the machine standing on a firm, uniform supporting surface. The use of a work tool attachment point to handle/lift objects, could affect the machine lift performance.

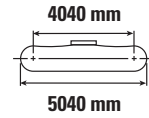
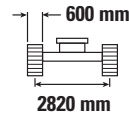
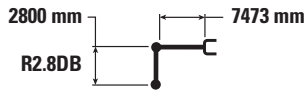
Lift capacity stays with ±5% for all available track shoes.

Always refer to the appropriate Operation and Maintenance Manual for specific product information.

# 340F L UHD Ultra High Demolition Hydraulic Excavator Specifications

## Retrofit Boom (straight position) – with Bucket Linkages, without Bucket, Heavy Lift: On

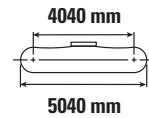
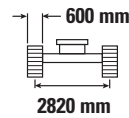
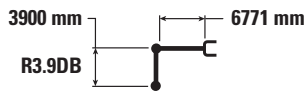
Long Hydraulic Variable Undercarriage



Boom Length	Unit	4500 mm		6000 mm		7500 mm		9000 mm		Undercarriage		mm
		ISO	ISO	ISO	ISO	ISO	ISO	ISO	ISO	ISO	ISO	
10 500 mm	kg									*12 150	*12 150	5860
9000 mm	kg			*13 800	*13 800	*11 300	10 350			*10 250	10 100	7600
7500 mm	kg	*13 350	*13 350	*14 050	*14 050	*12 000	10 400			*9400	7950	8740
6000 mm	kg	*19 300	*19 300	*14 850	14 300	*12 250	10 150	*10 550	7550	*9050	6850	9520
4500 mm	kg			*15 800	13 400	*12 650	9700	*10 600	7400	*8900	6200	10 000
3000 mm	kg			*16 300	12 500	*12 850	9250	10 400	7150	8550	5900	10 250
1500 mm	kg			*15 900	11 950	*12 650	8900	10 200	6950	*8250	5800	10 270
0 mm	kg			*14 550	11 750	*11 850	8700	*9500	6850	*7500	5950	10 060
-1500 mm	kg			*12 400	11 750	*10 350	8650	*8000	6850	*6500	6350	9620
-3000 mm	kg					*7850	*7850			*7050	*7050	8030

## Retrofit Boom (bent position) – with Bucket Linkages, without Bucket, Heavy Lift: On

Long Hydraulic Variable Undercarriage



Boom Length	Unit	3000 mm		4500 mm		6000 mm		7500 mm		9000 mm		Undercarriage		mm
		ISO	ISO	ISO	ISO	ISO	ISO	ISO	ISO	ISO	ISO	ISO	ISO	
9000 mm	kg							*6800	*6800			*6000	*6000	7680
7500 mm	kg											*5650	*5650	8810
6000 mm	kg							*9650	*9650	*8250	8250	*5550	*5550	9580
4500 mm	kg					*12 150	*12 150	*10 400	*10 400	*9350	8050	*5600	*5600	10 070
3000 mm	kg			*18 700	*18 700	*13 850	*13 850	*11 350	10 250	*9800	7700	*5800	*5800	10 310
1500 mm	kg			*21 200	19 900	*15 300	13 250	*12 150	9650	*10 200	7400	*6200	5950	10 330
0 mm	kg	*7450	*7450	*20 450	18 800	*16 050	12 500	*12 650	9200	10 350	7100	*6800	5950	10 120
-1500 mm	kg	*12 200	*12 200	*21 500	18 300	*16 050	12 050	*12 650	8850	10 150	6900	*7800	6250	9680
-3000 mm	kg	*17 750	*17 750	*19 900	18 150	*15 200	11 850	*11 950	8700			*9300	6850	8970



ISO 10567



\*Indicates that the load is limited by hydraulic lifting capacity rather than tipping load. The above loads are in compliance with hydraulic excavator lift capacity standard ISO 10567:2007. They do not exceed 87% of hydraulic lifting capacity or 75% of tipping load. Weight of all lifting accessories must be deducted from the above lifting capacities. Lifting capacities are based on the machine standing on a firm, uniform supporting surface. The use of a work tool attachment point to handle/lift objects, could affect the machine lift performance.

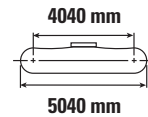
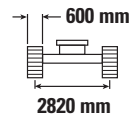
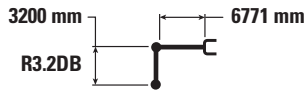
Lift capacity stays with ±5% for all available track shoes.

Always refer to the appropriate Operation and Maintenance Manual for specific product information.

# 340F L UHD Ultra High Demolition Hydraulic Excavator Specifications

## Retrofit Boom (bent position) – with Bucket Linkages, without Bucket, Heavy Lift: On

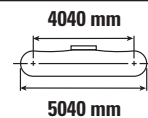
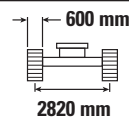
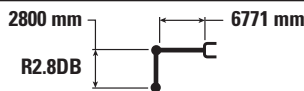
Long Hydraulic Variable Undercarriage



Boom Length	Unit	3000 mm		4500 mm		6000 mm		7500 mm		9000 mm		mm		
		Diagram	Diagram	Diagram	Diagram	Diagram	Diagram	Diagram	Diagram	Diagram	Diagram	Diagram	Diagram	
9000 mm	kg											*7750	*7750	6730
7500 mm	kg							*9950	*9950			*7250	*7250	8000
6000 mm	kg							*10 450	*10 450			*7150	*7150	8840
4500 mm	kg			*17 000	*17 000	*13 150	*13 150	*11 100	10 550	*9900	7850	*7250	*7250	9360
3000 mm	kg			*20 300	*20 300	*14 700	13 850	*11 900	10 050	*10 250	7600	*7600	6800	9620
1500 mm	kg			*17 850	*17 850	*15 850	12 950	*12 550	9550	*10 500	7300	*8200	6600	9640
0 mm	kg			*19 300	18 550	*16 300	12 350	*12 850	9100	10 350	7100	*9150	6650	9420
-1500 mm	kg	*13 250	*13 250	*20 750	18 300	*15 900	12 050	*12 550	8900			*10 000	7000	8950
-3000 mm	kg	*20 900	*20 900	*18 600	18 300	*14 550	11 950	*11 350	8800			*10 000	7900	8170

## Retrofit Boom (bent position) – with Bucket Linkages, without Bucket, Heavy Lift: On

Long Hydraulic Variable Undercarriage



Boom Length	Unit	3000 mm		4500 mm		6000 mm		7500 mm		9000 mm		mm		
		Diagram	Diagram	Diagram	Diagram	Diagram	Diagram	Diagram	Diagram	Diagram	Diagram	Diagram	Diagram	
9000 mm	kg											*9950	*9950	6310
7500 mm	kg							*10 450	*10 450			*9150	*9150	7650
6000 mm	kg					*12 300	*12 300	*10 850	10 800			*8950	8650	8530
4500 mm	kg			*17 950	*17 950	*13 650	*13 650	*11 450	10 400	*9850	7750	*9000	7650	9070
3000 mm	kg			*18 950	*18 950	*15 100	13 650	*12 150	9900	*10 450	7500	*9350	7050	9340
1500 mm	kg					*16 100	12 800	*12 700	9450	10 500	7250	9900	6850	9360
0 mm	kg			*16 700	*16 700	*16 300	12 250	*12 850	9050	10 300	7050	10 100	6900	9130
-1500 mm	kg	*12 100	*12 100	*20 100	18 250	*15 650	12 000	*12 350	8850			*10 200	7350	8640
-3000 mm	kg			*17 650	*17 650	*14 000	12 000	*10 800	8850			*10 000	8400	7830



ISO 10567



\*Indicates that the load is limited by hydraulic lifting capacity rather than tipping load. The above loads are in compliance with hydraulic excavator lift capacity standard ISO 10567:2007. They do not exceed 87% of hydraulic lifting capacity or 75% of tipping load. Weight of all lifting accessories must be deducted from the above lifting capacities. Lifting capacities are based on the machine standing on a firm, uniform supporting surface. The use of a work tool attachment point to handle/lift objects, could affect the machine lift performance.

Lift capacity stays with ±5% for all available track shoes.

Always refer to the appropriate Operation and Maintenance Manual for specific product information.

# 340F L UHD Ultra High Demolition Hydraulic Excavator Specifications

## Work Tool Offering Guide (UHD Fronts)\*

<b>Boom Type</b>	<b>UHD Boom</b>
<b>Stick Type</b>	<b>UHD Stick</b>
<b>Undercarriage</b>	<b>Long/Hydraulic Variable Gauge</b>
Multi-Processor	MP318 MP324
Crusher	P315 P325
Demolition and Sorting Grapple	G320B G325B
Scrap and Demolition Shear	S320B S325B
Dedicated Coupler	CW40 CWAC40

\*Matches are dependent on excavator configurations. Consult your Cat dealer for proper work tool match.

# 340F L UHD Ultra High Demolition Hydraulic Excavator Specifications

## Work Tool Offering Guide (Retrofit Fronts)†

Boom Type		Bent			Straight			Bent			Straight		
Stick Type		R3.9	R3.2	R2.8	R3.9	R3.2	R2.8	R3.9	R3.2	R2.8	R3.9	R3.2	R2.8
Undercarriage		Long						Hydraulic Variable Gauge					
Hydraulic Hammer	H140Es												
	H160Es				***	***	***				***	***	***
Multi-Processor	MP30 CC Jaw	***				^	***	***			***	***	***
	MP30 CR Jaw	***				^	***	***			***	***	***
	MP30 PP Jaw	***	^^	^^				***					
	MP30 PS Jaw	***				^	***	***			***	***	***
	MP30 S Jaw	***				^	***	***			***	***	***
	MP30 TS Jaw		^,^^	^,^^									
Crusher	P335	^				^	***	**			***	***	***
Pulverizer	P235	***						***					
Demolition and Sorting Grapple	G325B-D/R				***								
	G330	^				***	***	**			**	**	**
Scrap and Demolition Shear	S340B		***	***					***	*			
	S365C		#			#			#			#	
Compactor (Vibratory Plate)	CVP110												
Orange Peel Grapple		These work tools are available for the 340F L UHD. Consult your Cat dealer for proper match.											
Dedicated Coupler	CW-45												
	CW-45s												

†Matches are dependent on excavator configurations. Consult your Cat dealer for proper work tool match.

- \* Match
- \*\* Match; Pin-on or Cat PG
- \*\*\* Match; Pin-on or CW
- # Match; Pin-on only

- ^ Work over the front only with CW (match; Pin-on and CW)
- ^^ Work over the front only with Cat PG (match; Pin-on, CW and Cat PG)

**Note:** Demolition and Sorting Grapple: D–Demolition shells, R–Recycling shells



# 340F L UHD Ultra High Demolition Hydraulic Excavator Specifications

## Bucket Specifications and Compatibility (Retrofit Booms)

	Linkage	Width mm	Capacity m <sup>3</sup>	Weight kg	Fill %	Long Undercarriage						HVG Undercarriage						
						Retrofit Boom												
						Bent Position			Straight Position			Bent Position			Straight Position			
			R2.8HD	R3.2HD	R3.9HD	R2.8HD	R3.2HD	R3.9HD	R2.8HD	R3.2HD	R3.9HD	R2.8HD	R3.2HD	R3.9HD	R2.8HD	R3.2HD	R3.9HD	
<b>Without Quick Coupler</b>																		
General Duty (GD)	DB	1350	1.64	1173	100	●	●	●	●	⊙	⊖	●	●	●	●	●	●	
	DB	1650	2.11	1352	100	●	⊙	⊖	⊖	○	◇	●	●	●	●	⊙	⊖	
	DB	1800	2.35	1453	100	⊙	⊖	⊖	○	○	◇	●	●	⊙	⊙	⊙	⊖	
Heavy Duty (HD)	DB	1350	1.64	1481	100	●	●	●	⊙	⊖	○	●	●	●	●	●	●	
	DB	1500	1.88	1600	100	●	●	⊖	⊖	○	◇	●	●	●	●	●	⊙	
	DB	1650	2.12	1730	100	⊙	⊙	⊖	○	○	◇	●	●	●	⊙	⊙	⊖	
Severe Duty (SD)	DB	1650	2.14	1827	90	●	⊙	⊖	○	○	◇	●	●	●	●	⊙	⊖	
Maximum load pin-on (payload + bucket)					kg	5680	5455	4810	4450	4240	3715	7190	6910	6130	5765	5500	4875	
<b>With Quick Coupler (CW45, CW45s)</b>																		
General Duty (GD)	DB	1050	1.17	986	100	●	●	●	●	●	⊙	●	●	●	●	●	●	
	DB	1200	1.40	1064	100	●	●	●	●	⊙	⊖	●	●	●	●	●	●	
	DB	1350	1.64	1143	100	●	●	⊙	⊙	⊖	○	●	●	●	●	●	⊙	
	DB	1500	1.87	1245	100	●	⊙	⊖	⊖	○	◇	●	●	●	●	●	●	⊖
	DB	1650	2.11	1324	100	⊙	⊙	⊖	○	○	◇	●	●	●	⊙	⊙	⊖	
Heavy Duty (HD)	DB	1350	1.64	1417	100	●	●	⊙	⊖	⊖	◇	●	●	●	●	●	⊙	
	DB	1500	1.88	1514	100	⊙	⊙	⊖	○	○	◇	●	●	●	●	⊙	⊖	
	DB	1650	2.12	1647	100	⊖	⊖	○	◇	◇	X	●	●	⊙	⊙	⊖	○	
Severe Duty (SD)	DB	1050	1.17	1272	90	●	●	●	●	●	⊙	●	●	●	●	●	●	
	DB	1650	2.15	1802	90	⊙	⊖	○	◇	◇	X	●	●	●	⊙	⊖	○	
Maximum load with coupler (payload + bucket)					kg	5205	4980	4335	3975	3765	3240	6715	6435	5655	5290	5025	4400	

The above loads are in compliance with hydraulic excavator standard EN474, they do not exceed 87% of hydraulic lifting capacity or 75% of tipping capacity with front linkage fully extended at ground line with bucket curled.

Capacity based on ISO 7451.

Bucket weight with General Duty tips.

### Maximum Material Density:

● 2100 kg/m<sup>3</sup>

⊙ 1800 kg/m<sup>3</sup>

⊖ 1500 kg/m<sup>3</sup>

○ 1200 kg/m<sup>3</sup>

◇ 900 kg/m<sup>3</sup>

X Not Recommended

Caterpillar recommends using appropriate work tools to maximize the value customers receive from our products. Use of work tools, including buckets, which are outside of Caterpillar's recommendations or specifications for weight, dimensions, flows, pressures, etc. may result in less-than-optimal performance, including but not limited to reductions in production, stability, reliability, and component durability. Improper use of a work tool resulting in sweeping, prying, twisting and/or catching of heavy loads will reduce the life of the boom and stick.

# 340F L UHD Standard Equipment

## Standard Equipment

Standard equipment may vary. Consult your Cat dealer for details.

### ELECTRICAL

- 80 amp alternator
- Circuit breaker
- Battery, standard
- Beacon
- Electric refueling pump with auto shutoff switch

### ENGINE

- Cat C9.3 ACERT diesel engine
- Meets Stage IV emission standards
- 2300 m altitude capability with no derate
- Biodiesel capable
- Automatic engine speed control
- Electric priming pump
- Water separator in fuel line including water level sensor and indicator
- High, economy and standard power modes
- Air cleaner
- Radial seal air filter
- Side-by-side cooling system
- Primary filter with water separator and water separator indicator switch
- Starting kit, cold weather, -18° C
- Fuel differential indicator switch in fuel line
- 2×4 micron main filters and 1×10 micron primary filter in fuel line
- Biodiesel capable
- Quick drains, engine and hydraulic oil (QuickEvac)

### HYDRAULIC SYSTEM

- Boom and stick lowering control devices with SmartBoom
- Heavy Lift
- Reverse swing damping valve
- Automatic swing parking brake
- High-performance hydraulic return filter
- Regeneration circuit for boom and stick
- Bio oil capable
- QC Control

### FRONT LINKAGE

- UHD boom nose with left/right lights
  - Fore boom with left/right lights
  - UHD 7.1 m stick
  - CB linkage with lifting eye
  - Cylinder bucket

### CAB

- Demolition cab with P5A glass (front and top)
- Parallel wiper and washer (front and top)
- Mirrors
- Pressurized operator station with positive filtration
- Sliding upper door window (left-hand cab door)
- Interior:
  - Coat hook
  - Beverage holder
  - Literature holder
  - Interior lighting
  - AM/FM radio mounting (DIN size)
  - Two 12V stereo speakers
  - Storage shelf suitable for lunch or toolbox
  - Power supply with 12V, two power outlets (10 amp)
  - Thumb wheel modulation joysticks for use with combined auxiliary control
  - Air conditioner, heater and defroster with climate control
- Seat:
  - Adjustable high-back, heated/ventilated seat with air suspension
  - Seat belt, 51 mm
  - Adjustable armrest
  - Height adjustable joystick consoles
  - Neutral lever (lock out) for all controls
  - Travel control pedals with removable hand levers
  - Two speed travel
  - Floor mat, washable
- Monitor:
  - Clock
  - Video ready
  - Color LCD display with warning, filter/fluid change, and working hour information
  - Language display (full graphic and full color display)
  - Machine condition, error code and tool mode setting information
  - Start-up level check for engine oil, engine coolant and hydraulic oil
  - Warning, filter/fluid change and working hour information
  - Fuel consumption meter
- Windshield:
  - One-piece, fixed
- Sun screen

### UNDERCARRIAGE/UPPERFRAME

- Grease Lubricated Track GLT2, resin seal
- Heavy duty track roller
- Towing eye on base frame
- HD bottom guard
- HD travel motor guard
- Swivel guard
- Refueling pump toolbox
- Counterweight, 8.45 mt

### LIGHTS

- Cab and boom lights with time delay (halogen)
- Exterior lights integrated into storage box

### SAFETY AND SECURITY

- Cat one key security system
- Door locks
- Cap locks on fuel and hydraulic tanks
- Lockable external tool/storage box
- Signaling/warning horn
- Secondary engine shutoff switch
- Mirrors
- Rearview and side-view cameras

### CAT CONNECT TECHNOLOGIES

- Product Link
- Rear vision and side vision cameras

### GUARDS

- FOGS (Falling Object Guard System) including overhead and windshield guards

## Optional Equipment

Optional equipment may vary. Consult your Cat dealer for details.

### HYDRAULIC SYSTEM

- HP hydraulic lines for stick
- MP hydraulic lines for stick
- QC hydraulic lines for stick

### FRONT LINKAGE

- Retrofit Reach boom nose with left/right lights
- R2.8DB stick
- R3.2DB stick
- R3.9DB stick
- DB linkage with lifting eye
- Cylinder bucket
- CW Quick coupler
- Cradle for UHD front parts
- Cradle for Retrofit front parts

### TRACKS

- 600 mm double grouser tracks
- 600 mm triple grouser HD tracks
- 700 mm triple grouser tracks

### ELECTRICAL

- Cold weather starting package, 240V, -32° C

### GUARDS

- Rubber bumpers on upperframe
- Track guiding guards:
  - Full length
  - Center

For more complete information on Cat products, dealer services, and industry solutions, visit us on the web at [www.cat.com](http://www.cat.com)

AEHQ7866 (12-2016)  
(Europe)

© 2016 Caterpillar  
All rights reserved

Materials and specifications are subject to change without notice. Featured machines in photos may include additional equipment. See your Cat dealer for available options.

CAT, CATERPILLAR, SAFETY.CAT.COM, their respective logos, "Caterpillar Yellow" and the "Power Edge" trade dress, as well as corporate and product identity used herein, are trademarks of Caterpillar and may not be used without permission.

VisionLink is a trademark of Trimble Navigation Limited, registered in the United States and in other countries.

