

EXPERIENCE WHAT YOU INSPIRED

COMFORT.  
PERFORMANCE.  
SMART.

CAT

INTRODUCING NEW D3 SERIES SKID STEER  
AND COMPACT TRACK LOADERS

Teknoxgroup

CAT

# MADE FOR YOU

**THE NEW CAT® D3 SERIES OF SKID STEER LOADERS AND COMPACT TRACK LOADERS WERE DESIGNED WITH YOU IN MIND. OPERATORS TOLD US WHAT THEY NEEDED TO WORK IN SAFETY AND COMFORT, EVERY DAY.**

## THAT'S WHY THE D3 SERIES OFFERS:

- In-built Smart technology to increase versatility and performance
- Doors that open wider and a more spacious cab so you can work in comfort
- New Smart attachments to make each machine suitable for a range of jobs
- New undercarriage design in the compact track loaders for stability during the toughest tasks
- Enhanced drivetrain and fuel system for performance you can rely on
- Of all the Cat® loaders, the 272D3 XE and 299D3 XE models offer the highest performance and most advanced technology.



## WHAT'S THE RIGHT MACHINE FOR YOU?

### YOUR GUIDE TO CHOOSING BETWEEN A COMPACT TRACK LOADER AND A SKID STEER LOADER.

#### COMPACT TRACK LOADERS

The track on a compact track loader creates a smooth ride in the toughest of conditions. These machines are more stable in all weathers and on slippery, muddy ground. This means less downtime throughout the year.



#### SKID STEER LOADERS

With fewer components, skid steer loaders cost less to buy and offer a durable design that's easy to service and maintain.



# A MACHINE THAT WORKS AS HARD AS YOU

The D3 Series of machines are more robust than ever before. The fuel system is more durable, with one filter that makes it easier to maintain.

A stronger step, wider tread, and a robust grab-handle help you get into the cab safely. These have been designed to better withstand daily wear and tear.

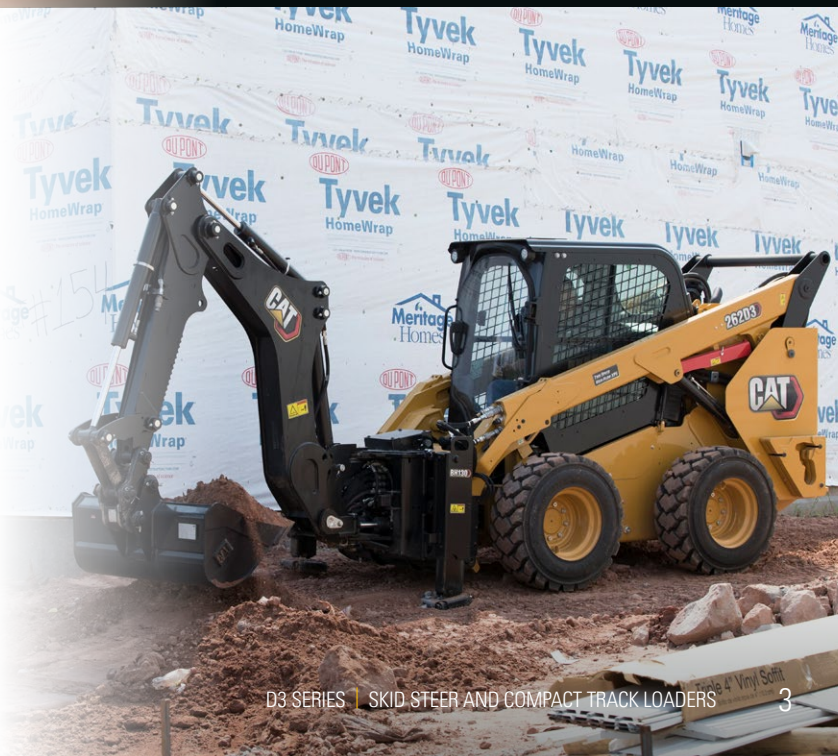


## STABILITY AND SAFETY, EVERY TIME

Experience stability and safety every time with the new undercarriage designed exclusively for the D3 Series compact track loaders. It reduces the rocking or pitching motion when you're handling heavy loads, grading or dumping material into a truck. Suspension creates a comfortable ride, for all applications, every day.

## ONE MACHINE FOR MULTIPLE TASKS

Use one machine, more efficiently, for a range of different tasks thanks to Smart technology. This technology enables the machine to automatically recognize when you add Smart attachments and converts the joystick to control the attachment. Now you can minimize downtime and maximize productivity by operating the machine with Smart attachments easily, from the comfort of your cab.



# CHOOSE YOUR SKID STEER LOADER

**WITH SMART TECHNOLOGY YOU CAN QUICKLY SWAP ATTACHMENTS TO GET THE MOST OUT OF YOUR MACHINE.**

## EVERY MODEL OFFERS:

- 40% wider door-opening and sealed, pressurised cabs with more legroom for the ultimate comfortable working environment
- advanced display to change settings and make adjustments easily, including the rear-view camera
- versatility thanks to unique Smart technology that makes it easy to use a range of attachments with your joystick controls
- improved fuel filtration system – more durable design with less maintenance
- high-vis orange seatbelt and rotary beacons for jobsite safety.

## 226D3

- **ENGINE POWER** C2.2 | 50 kW (67 hp)
- **ARM TYPE** Radial Lift
- **ROC (% OF TIP LOAD)** 50% | 703 kg (1,550 lb)
- **HYDRAULIC FLOW** 69 lpm (230 bar) | Opt. 99 lpm
- **CAB HEIGHT** 2,028 mm (80 inch)
- **MAX HINGE PIN HEIGHT** 2,818 mm (111 inch)



## 232D3

- **ENGINE POWER** C2.2 | 50 kW (67 hp)
- **ARM TYPE** Vertical Lift
- **ROC (% OF TIP LOAD)** 50% | 865 kg (1,900 lb)
- **HYDRAULIC FLOW** 69 lpm (230 bar) | Opt. 99 lpm
- **CAB HEIGHT** 2,029 mm (80 inch)
- **MAX HINGE PIN HEIGHT** 3,001 mm (118 inch)



## 236D3

- **ENGINE POWER** C3.3 | 55 kW (74 hp)
- **ARM TYPE** Radial Lift
- **ROC (% OF TIP LOAD)** 50% | 818 kg (1,800 lb)
- **HYDRAULIC FLOW** 76 lpm (230 bar) | Opt. 112 lpm
- **CAB HEIGHT** 2,082 mm (82 inch)
- **MAX HINGE PIN HEIGHT** 3,122 mm (123 inch)





## 242D3

- ENGINE POWER C3.3 | 55 kW (74 hp)
- ARM TYPE Vertical Lift
- ROC (% OF TIP LOAD) 50% | 1,000 kg (2,200 lb)
- HYDRAULIC FLOW 76 lpm (230 bar) | Opt. 112 lpm
- CAB HEIGHT 2,111 mm (83 inch)
- MAX HINGE PIN HEIGHT 3,076 mm (121 inch)



## 246D3

- ENGINE POWER C3.3 | 55 kW (74 hp)
- ARM TYPE Radial Lift
- ROC (% OF TIP LOAD) 50% | 1,000 kg (2,200 lb)
- HYDRAULIC FLOW 86 lpm (230 bar) | Opt. 121 lpm
- CAB HEIGHT 2,111 mm (83 inch)
- MAX HINGE PIN HEIGHT 3,154 mm (124 inch)



## 262D3

- ENGINE POWER C3.3 | 55 kW (74 hp)
- ARM TYPE Vertical Lift
- ROC (% OF TIP LOAD) 50% | 680 kg (1,499 lb)
- HYDRAULIC FLOW 86 lpm (230 bar) | Opt. 121 lpm
- CAB HEIGHT 2,111 mm (83 inch)
- MAX HINGE PIN HEIGHT 3,172 mm (125 inch)



## 272D3

- ENGINE POWER C3.8 | 73 kW (98 hp)
- ARM TYPE Vertical Lift
- ROC (% OF TIP LOAD) 50% | 1,570 kg (3,450 lb)
- HYDRAULIC FLOW 86 lpm (280 bar) | Opt. 121 lpm
- CAB HEIGHT 2,094 mm (82 inch)
- MAX HINGE PIN HEIGHT 3,229 mm (127 inch)



## 272D3 XE

- ENGINE POWER C3.8 | 82 kW (110 hp)
- ARM TYPE Vertical Lift
- ROC (% OF TIP LOAD) 50% | 1,680 kg (3,700 lb)
- HYDRAULIC FLOW 150 lpm (280 bar)
- CAB HEIGHT 2,133 mm (84 inch)
- MAX HINGE PIN HEIGHT 3,265 mm (129 inch)

# CHOOSE YOUR COMPACT TRACK LOADER

**WITH UNIQUE CAT®  
SUSPENSION AND  
TRACK DESIGN,  
THE D3 SERIES  
COMPACT TRACK  
LOADERS PROVIDE  
A COMFORTABLE  
WORKING  
ENVIRONMENT TO  
HELP YOU TACKLE  
ANY TASK.**

## EVERY MODEL OFFERS:

- 40% wider door-opening and sealed, pressurised cabs with more legroom for the ultimate comfortable working environment
- a Cat undercarriage for stability in the most demanding situations
- advanced display to change settings and make adjustments easily, including the rear-view camera
- versatility thanks to unique Smart technology that makes it easy to use a range of attachments with your joystick controls
- two-speed travel as standard with one-speed mode for high-torque performance
- improved fuel filtration system – more durable design with less maintenance
- high-vis orange seatbelt and rotary beacons for jobsite safety.

## 239D3

- ENGINE POWER C2.2 | 50 kW (67 hp)
- ARM TYPE Radial Lift
- ROC (% OF TIP LOAD) 35% | 695 kg (1,530 lb)  
50% | 995 kg (2,194 lb)
- HYDRAULIC FLOW 69 lpm (230 bar) | Opt. 99 lpm
- CAB HEIGHT 2,034 mm (80 inch)
- MAX HINGE PIN HEIGHT 2,824 mm (111 inch)



## 249D3

- ENGINE POWER C2.2 | 50 kW (67 hp)
- ARM TYPE Vertical Lift
- ROC (% OF TIP LOAD) 35% | 790 kg (1,750 lb)  
50% | 1,130 kg (2,491 lb)
- HYDRAULIC FLOW 69 lpm (230 bar) | Opt. 99 lpm
- CAB HEIGHT 2,039 mm (80 inch)
- MAX HINGE PIN HEIGHT 3,002 mm (118 inch)



## 259D3

- ENGINE POWER C3.3 | 55 kW (74 hp)
- ARM TYPE Vertical Lift
- ROC (% OF TIP LOAD) 35% | 915 kg (2,010 lb)  
50% | 1,305 kg (2,877 lb)
- HYDRAULIC FLOW 76 lpm (280 bar) | Opt. 112 lpm
- CAB HEIGHT 2,111 mm (83 inch)
- MAX HINGE PIN HEIGHT 3,075 mm (121 inch)





## 279D3

- ENGINE POWER C3.3 | 55 kW (74 hp)
- ARM TYPE Radial Lift
- ROC (% OF TIP LOAD) 35% | 1,010 kg (2,220 lb)  
50% | 1,445 kg (3,186 lb)
- HYDRAULIC FLOW 86 lpm (280 bar) | Opt. 121 lpm
- CAB HEIGHT 2,113 mm (83 inch)
- MAX HINGE PIN HEIGHT 3,173 mm (125 inch)



## 289D3

- ENGINE POWER C3.3 | 55 kW (74 hp)
- ARM TYPE Vertical Lift
- ROC (% OF TIP LOAD) 35% | 1,315 kg (2,890 lb)  
50% | 1,880 kg (4,145 lb)
- HYDRAULIC FLOW 86 lpm (280 bar) | Opt. 121 lpm
- CAB HEIGHT 2,113 mm (83 inch)
- MAX HINGE PIN HEIGHT 3,178 mm (125 inch)



## 299D3

- ENGINE POWER C3.8 | 73 kW (98 hp)
- ARM TYPE Vertical Lift
- ROC (% OF TIP LOAD) 35% | 1,580 kg (3,480 lb)  
50% | 2,087 kg (4,601 lb)
- HYDRAULIC FLOW 86 lpm (280 bar) | Opt. 121 lpm
- CAB HEIGHT 2,125 mm (84 inch)
- MAX HINGE PIN HEIGHT 3,208 mm (126 inch)



## 299D3 XE

- ENGINE POWER C3.8 | 82 kW (110 hp)
- ARM TYPE Vertical Lift
- ROC (% OF TIP LOAD) 35% | 1,620 kg (3,560 lb)  
50% | 2,315 kg (5,104 lb)
- HYDRAULIC FLOW 150 lpm (280 bar)
- CAB HEIGHT 2,125 mm (84 inch)
- MAX HINGE PIN HEIGHT 3,208 mm (126 inch)

### FIND SERVICE PARTS AND OTHER ATTACHMENTS

Shop for more than 1.4 million Cat parts and attachments at [parts.cat.com](https://parts.cat.com)

Browse for whole range of attachments and machines at [cat.com](https://cat.com)



PARTS



ATTACHMENTS



MACHINES

# GAME-CHANGING TECHNOLOGY

Make one machine more versatile than ever before with three Smart attachments that are exclusive to Caterpillar. Smart technology interacts with the machine to change the built-in advanced display. It also enables you to use the joystick to operate each attachment.

Now you can handle a wide variety of tasks with just one machine.

## 1. BACKHOE

*All the functionality of an excavator and a backhoe in a skid steer*

- Take on a range of tasks, including trenching, digging footings, forming and maintaining ditches
- Auxiliary-hydraulic system allows pairing with hydro-mechanical work tools, including hammers, thumbs, augers, and vibratory compactors
- Hydraulic side-shift function gives you improved visibility.

## 2. DOZER BLADE

*Cut, grade and finish with this Smart blade*

- Features a curved moldboard to keep material rolling
- A trapezoid design with angled end bits allows flush-cutting against vertical surfaces when the blade is fully tilted
- Special display screens allow you to select how the blade is controlled.

## 3. GRADER BLADE

*Giving you Track-Type Tractor stability with grader functionality*

- Excellent visibility of the blade edge
- Ability to add 2D and 3D grading systems
- Work faster and more accurately with Cross Slope control.



Contact your Cat dealer to find out more and book a test drive or visit [www.cat.com](http://www.cat.com).

**Teknoxgroup** 

© 2020 Caterpillar. All Rights Reserved. CAT, CATERPILLAR, LET'S DO THE WORK, their respective logos, "Caterpillar Corporate Yellow", the "Power Edge" and Cat "Modern Hex" trade dress as well as corporate and product identity used herein, are trademarks of Caterpillar and may not be used without permission.