

MEET THE NEXT GENERATION MINI EXCAVATORS



DESIGNED WITH
YOU IN MIND

NEXT
GEN | MINI EXCAVATORS

Teknoxgroup 

WHAT CUSTOMERS ASKED FOR

CUSTOMERS ASKED US TO REWRITE THE RULES WHEN IT CAME TO DESIGNING THE NEW MINI EXCAVATOR RANGE. THEY TOLD US:

- **I need even more performance –**
I want to CHOOSE machines which provide maximum performance, particularly with attachments
- **I want a better experience as an operator –**
I want a more comfortable, better-connected place to work
- **I want the best owning and operating costs –**
I want EFFICIENT fuel, service and maintenance costs

WHAT WE DELIVERED

**“FOR SERVICING,
THE CAB LIFTS UP
AND EVERYTHING IS
REALLY EXTREMELY
EASY TO GET TO.”**

INSPIRED BY DAVID – GENERAL
GROUNDWORKS AND DEMOLITIONS



THE GENERATION OF EXCELLENCE

TO DO YOUR BEST WORK, YOU NEED A COMFORTABLE MACHINE YOU CAN RELY ON. THE NEXT GENERATION MINI EXCAVATORS WERE DESIGNED WITH YOU IN MIND.

The high-performance machines are not only affordable but they boast improved servicing, comfort and control.



COMFORT AND CONTROL

Putting the control in your hands, joystick and cruise control make manoeuvring, positioning and travelling in your excavator easier and faster. You can choose to start the machine with the push of a button thanks to an optional Bluetooth-enabled key.

AFFORDABLE

The Next Generation Mini Excavators offer lower ownership and operator costs. Now you can spend less time and money on servicing, repairs and fuel. The all-steel design is durable and parts are competitively priced, making this new range an investment in both quality and efficiency.

HIGH PERFORMANCE

Multifunctional and versatile, the new mini excavator models are best in their class for productivity and performance.

You can customise the operator settings to suit the task in hand with adjustable hydraulics and speed settings. The Next Generation models deliver up to 20% more performance without compromising your fuel efficiency.

NO-HASSLE SERVICING

Servicing and repair are easy thanks to improved access, so your servicing time is reduced. Longer service intervals mean less downtime and more productive hours on site. Let's do the work!



1-2 TONNE LINE-UP

WORKING IN SMALL SPACES HAS NEVER BEEN SO EASY – OR SO COMFORTABLE. CHOOSE FROM FIVE NEW MODELS WITH INDUSTRY FIRST FEATURES THAT YOU’LL ONLY FIND IN A CAT® MINI EXCAVATOR.

SAVE TIME AND MONEY

The total ownership cost of these new models is up to 15% less than previous models.

The canopies and cabs tilt up on these models, making it easier, quicker and cheaper to service the machines.

The 1-2 tonne models come with:

- stick steer for comfortable control
- LCD monitor with the option of Bluetooth radio
- air conditioning option on 301.8 and 302 CR
- cruise control for hands-free travel.

301.5 / 301.6*

- Gross power 16.1 kW / 21.6 hp
- Track width 990 mm / 39 in retracted – 1,300 mm / 51.18 in expanded
- Weight (max)
301.5 1,760 kg / 3,880 lb (canopy)
301.6 1,960 kg / 4,321 lb (cab)
- Max. dig depth 2,340 mm / 92.1 in (standard stick)



Standard tail swing



* 301.6 available in the EAME region only



301.7 CR

- Gross power 16.1 kW / 21.6 hp
- Track width 990 mm / 39 in retracted
1,300 mm / 51.18 in expanded
- Weight (max) 1,835 kg / 4,045 lb (canopy)
- Max. dig depth 2,350 mm / 92.5 in
(standard stick)

Compact Radius



301.8

- Gross power 16.1 kW / 21.6 hp
- Track width 990 mm / 39 in retracted
1,300 mm / 51.18 in expanded
- Weight (max) 1,895 kg / 4,178 lb (canopy)
2,025 kg / 4,464 lb (cab)
- Max. dig depth 2,370 mm / 93.3 in
(standard stick)

Standard tail swing



302 CR

- Gross power 16.1 kW / 21.6 hp
- Track width 1,090 mm / 42.9 in retracted
1,400 mm / 55.12 in expanded
- Weight (max) 2,100 kg / 4,630 lb (canopy)
2,200 kg / 4,850 lb (cab)
- Max. dig depth 2,370 mm / 93.3 in
(standard stick)

Compact Radius



NEXT GEN FEATURES

STICK STEER

Stick steer makes long days easier and so much more comfortable.

POWER IN YOUR HANDS

Moving around the job site is even easier with the Cat Stick Steer option. Easily switch from traditional travel controls with levers and pedals to joystick controls with a push of a button.

You can control the machine just like a skid steer loader using the left-hand joystick. With the right-hand joystick you can control the dozer blade, or the boom and stick function.



AIR CON

Work in luxury through the long, hot days when you choose the option of cool, clean air con.

STAY COOL

You can control the air con and the heating through the LCD monitor to make sure your cab stays at a temperature to suit you.

The sealed, pressurised cab design keeps dust out and clean air in.

NEXT GEN MINI EXCAVATORS

CRUISE CONTROL

Travel in comfort when you choose cruise control mode.

TRAVEL IN STYLE

You can set the cruise control by pressing a trigger underneath the joystick – perfect for moving the machine across a large open site. You no longer have to put up with backache at the end of the day from hunching over levers.



LCD MONITOR

Customise your settings, receive calls and stream music all in one place.

TOTAL CONTROL

Adjust your settings, such as hydraulic speed, to suit the task in hand.

You can also receive calls through the monitor while you work, and adjust the temperature in the cab.

The option of Bluetooth means you can turn up the radio or stream your own playlists.

SMALL MACHINE, BIG SURPRISES

WHEN SAMUEL PORTAUD TRIED A NEW
MINI EXCAVATOR IN A VINEYARD,
THE SURPRISES JUST KEPT COMING...

**“IT MUST BE
ONE OF THE ONLY
ONE-METRE-WIDE
COMPACT
MACHINES
THAT HAS AIR
CONDITIONING”**

INSPIRED BY SAMUEL – VITICULTURE



NEXT GEN MINI EXCAVATORS

Samuel works with vineyards in the south-west of France. He needs a machine that fits between the rows of vines and allows him to work comfortably in the hot summer sun. He tried a 302 CR model – and was surprised by what he found.

1 MACHINE, 6,000 KILOMETRES

Samuel already had experience of operating a Cat machine. Working long hours outdoors, he put his previous model through its paces. He knew that the hours of manoeuvring between the vines were adding up, but he was surprised at how many kilometres he managed to cover.

“We counted we did 6,000 kilometres in the vineyards with this machine! We drove so much with it.”

COOL UNDER PRESSURE

Since he switched models to a new 302CR, he hasn't looked back. The experience of all that travelling has been massively improved for Samuel by air conditioning and stick steer.

“The big innovation of this machine in terms of comfort is the air conditioning,” he explained. “I believe it must be one of the only one-metre-wide compact machines that has air conditioning, so that's a big advantage.

“I am really in favour of stick steer mode for machine travel. Why? Because I have never been good with my feet! So for a change, I control this with my hands. I feel it's extraordinary!”

NEED PARTS? NO PROBLEM!

When it came to maintenance, Samuel's nearest Cat dealer has exceeded his expectations. “I was a little afraid in the first place to call a number to get parts, but every time I called they were very reactive. I had the parts the day after, and I never got stopped because of a failure or a missing part.”

MINI MANIA


Finally, to his surprise, Samuel has become a trendsetter. He has found himself starting a mini mania amongst the vineyards in his region.

“I started a trend – now everyone has one!” he says.



**"I'VE BEEN USING
STICK STEER A LOT...
IT'S DEFINITELY A LOT
BETTER RIDING ROUND."**

**INSPIRED BY JAMES – RENTAL EQUIPMENT
FOR CONSTRUCTION AND GROUNDWORK**



**“THIS MACHINE
IS A BEAST!
IT’S STRONG
AND FAST.”**

INSPIRED BY SANDRO – EXCAVATION FOR WATER
SEWAGE & GAS CONNECTION

7-10 TONNE LINE-UP

SMALL BUT MIGHTY, THESE MACHINES PROVIDE STRENGTH WHEN YOU NEED IT. THE NEW MODELS PROVIDE A POWERFUL RANGE OF OPTIONS TO CHOOSE FROM.



307.5

- Gross power 41.7 kW / 55.9 hp
- Lift capacity (max) 3,675 kg / 8,102 lb
- Weight (max) 8,233 kg / 18,152 lb (cab) (standard stick)
- Max. dig depth 4,107 mm / 162 in (standard stick)



Standard tail swing



308 CR / 308 CR VAB

- Gross power 53.3 kW 71.5 hp
- Lift capacity (max) 3,962 kg / 8,735 lb
3,501 kg / 7,718 lb (VAB)
- Weight (max) 9,380 kg 20,678 lb (cab) (standard stick)
9,403 kg 20,731 lb (High Flow)
- Max. dig depth 3,931 mm / 154.8 in (VAB in) (standard stick)
3,468 mm / 136.5 in (VAB out)



Compact Radius

MORE FUNCTIONS, LESS MONEY

With enhanced lift strength, travel power and functions, these models are hugely versatile.

Extended service intervals provide a 10% cost saving compared to previous models.

VAB models include a variable angle boom.

Burn less fuel – 11% fuel savings
compared to a 308E2

The 7-10 tonne models come with:

- High Flow* for hydraulic power you can customise
- Stick steer for comfortable control
- LCD monitor with optional Bluetooth
- Cruise control for hands-free travel
- Air conditioning and heating for year-round comfort.

* High Flow available on 309 CR only



High Flow

309 CR / 309 CR VAB

- Net power 53.3 kW 71.5 hp
- Lift capacity (max) 3,784 kg / 8,342 lb
5,720 kg / 12,610 lb (VAB)
- Weight (max) 9,403 kg 20,731 lb (cab)
- Max. dig depth 4,115 mm/ 162.0 in
3,462 mm/ 136.3 in (VAB out)



Compact Radius



310

- Net power 53.3 kW 71.5 hp
- Lift capacity (max) 5,337 kg / 11,766 lb
(long stick)
- Weight (max) 10,182 kg / 22,447 lb
- Max. dig depth 5,211 mm 205 in
(long stick)



Standard tail swing

7-10 TONNE FEATURES

STICK STEER

It's easy to switch from traditional travel controls to joystick controls.

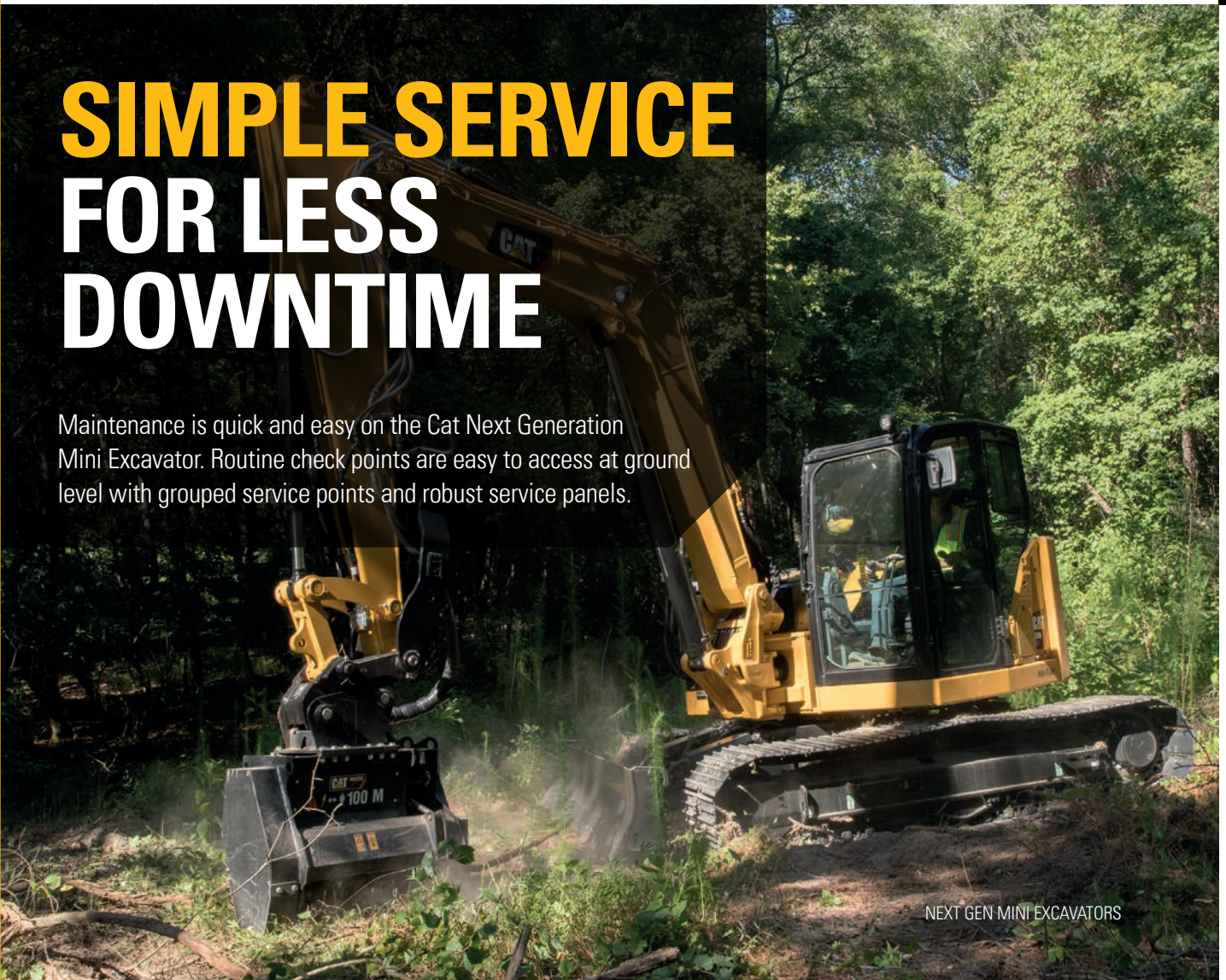
SIMPLE AND COMFORTABLE

The stick steer function keeps your options open for controlling the machine. You can choose to operate with levers and pedals, or transfer all the power and co-ordination to your hands at the touch of a button.



SIMPLE SERVICE FOR LESS DOWNTIME

Maintenance is quick and easy on the Cat Next Generation Mini Excavator. Routine check points are easy to access at ground level with grouped service points and robust service panels.



CRUISE CONTROL

Travel in comfort when you choose cruise control mode.

TRAVEL IN STYLE

You can set the cruise control by pressing a trigger underneath the joystick – perfect for moving the machine across a large open site. You no longer have to put up with backache at the end of the day from hunching over levers.

LCD MONITOR

Customise your settings, receive calls and stream music all in one place.

TOTAL CONTROL

Adjust your settings, such as hydraulic speed, to suit the task in hand.

You can also receive calls through the monitor while you work, and adjust the temperature in the cab.

The option of Bluetooth means you can turn up the radio or stream your own playlists.



To find out more about the new range of Next Generation Mini Excavators,
contact your local Cat dealer or visit www.cat.com.



© 2019 Caterpillar. All Rights Reserved. CAT, CATERPILLAR, LET'S DO THE WORK, their respective logos, "Caterpillar Yellow", the "Power Edge" and Cat "Modern Hex" trade dress as well as corporate and product identity used herein, are trademarks of Caterpillar and may not be used without permission.

PEDJ0433