



Cat[®]

PM310, PM312 and PM313

COLD PLANER

FEATURES:

■ Advanced Milling System

- Automatic Load Control feature provides optimum cutting performance even in deep plunge-cuts
- Optional Cat[®] Grade Control
 - Provides simple operation and precise performance
 - Ramp-in, ramp-out capability
- Enhanced flush cut capability

■ Heavy-duty Powertrain

- Powerful Cat C9.3 ACERT™ engine meets U.S. EPA Tier 4 Final and EU Stage IV emission standards
- Delivers 242 kW (325 hp) gross power

■ Simplified Service

- Large service doors provide quick, easy access
- Electrical system color coded, numbered for easy identification and wrapped in braid for protection
- Extended hydraulic oil service intervals: 3,000 hours without oil sampling, 6,000 hours with oil sampling
- Optional Accessory Drive System provides full operational control of main machine functions for assisted machine movement during maintenance and service
- Electronic Control Module (ECM) monitors engine and systems, alerting operator to performance issues and providing troubleshooting information; full Cat Electronic Technician (Cat ET) support
- Convenient parts availability and dealer locations

■ Robust Cutting System

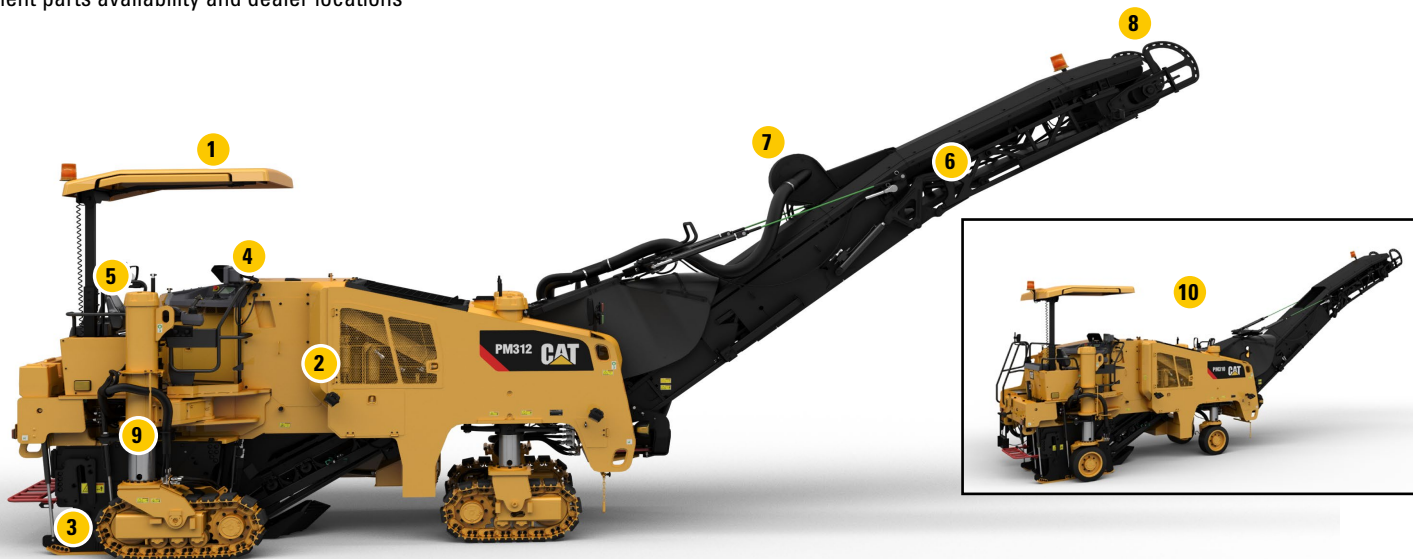
- Heavy-duty dry clutch
- Three cutting speeds, electronic selection
- Rotor driven by molded, high tensile belts
- Automatic belt-tensioning prevents slippage
- Reinforced cutting chamber offers enhanced durability

■ Productive Work Environment

- Ergonomically arranged operators station
- Controls are backlit and easy to use
- Comfortable suspension seat and vibration-reducing floor mat
- Optional remote cameras enhance visibility
- Excellent work area lighting for worry-free low-light operation
- Optional Power Canopy
- Optional Dust Abatement System

■ Optimal Maneuverability and Control

- Mobile rear lifting column can be positioned inboard for flush cutting capability
- Traction control system reduces slippage



- 1 Optional Power Canopy
- 2 Cat C9.3 ACERT Engine
- 3 Sideplates with Position-sensing Cylinders
- 4 Optional Cat Grade Control
- 5 Suspension Seat

- 6 Folding Loading Conveyor
- 7 Optional Dust Abatement System
- 8 Optional Remote Camera
- 9 Mobile Rear Lifting Column
- 10 Wheel Undercarriage Configuration



PM310, PM312 and PM313 Cold Planer

Specifications

Operating Weight*	TRACK	WHEEL
PM310	21 655 kg (47,746 lb)	20 955 kg (46,203 lb)
PM312	21 842 kg (48,153 lb)	21 142 kg (46,610 lb)
PM313	21 946 kg (48,382 lb)	21 246 kg (46,839 lb)

Transport Weight**	TRACK	WHEEL
PM310	20 043 kg (44,187 lb)	19 343 kg (42,644 lb)
PM312	20 230 kg (44,560 lb)	19 530 kg (43,017 lb)
PM313	20 334 kg (44,829 lb)	19 634 kg (43,286 lb)

Powertrain

Engine Model	Cat C9.3 ACERT
Global Emissions	U.S. EPA Tier 4 Final / EU Stage IV
Gross Power - ISO 14396	242 kW (325 hp)
Operating Speed	33 m/min (108 ft/min)
Maximum Travel Speed	Track: 5.5 km/h (3.4 mph) Wheel: 7.5 km/h (4.7 mph)

Cutting System

PM310 Milling Width	1000 mm (39.4 in)
Number of Bits	97
PM312 Milling Width	1225 mm (48.2 in)
Number of Bits	112
PM313 Milling Width	1300 mm (51.2 in)
Number of Bits	117
Maximum Cutting Depth	330 mm (13 in)
Rotor Speeds	97 / 109 / 121 rpm

Service Refill Capacities

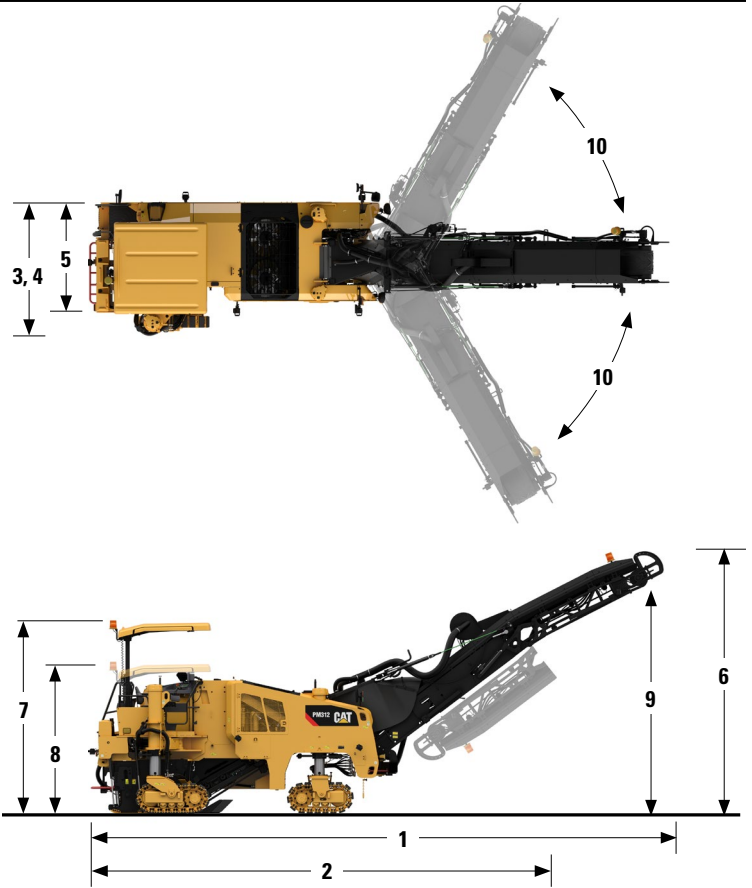
Fuel Tank	600 L (158.5 gal)
Diesel Exhaust Fluid (DEF) Tank	22 L (5.8 gal)
Cooling System	62 L (16.4 gal)
Engine Oil	30 L (7.9 gal)
Hydraulic Oil	59 L (15.6 gal)
Water Tank	1260 L (333 gal)

* Operating Weights are approximate and include coolant, lubricants, full fuel tank, full water tank and 75 kg (165 lb) operator.

** Transport Weights are approximate and include coolant, lubricants, 50% full fuel tank, and empty water tank.

Optional Equipment

- Cat Grade Control
- Warning Beacon
- Power Canopy
- Product Link™
- Hydraulic Folding Conveyor
- Additional Touchscreen Display
- Additional Water Spray System
- Cat Diamond Bits
- Air Compressor
- Dust Abatement System
- Remote Cameras
- High Pressure Washdown System
- Commissioning Support
- Ballast Kit
- Emergency Pump



Dimensions

1 Overall Length, Conveyor Up	11.11 m	36.45 ft
2 Transport Length	9.32 m	30.58 ft
3 Maximum Machine Width	2.55 m	8.37 ft
4 Transport Width	2.55 m	8.37 ft
5 Minimum Machine Width	2.18 m	7.15 ft
6 Maximum Height, Raised Conveyor	5.15 m	16.89 ft
7 Height to Canopy	3.75 m	12.30 ft
8 Transport Height	3.00 m	9.84 ft
9 Maximum Truck Clearance	4.70 m	15.425 ft
10 Conveyor Swing	±60° from center	
Minimum Left Cutting Radius	4.14 m	13.58 ft
Minimum Right Cutting Radius	1.92 m	6.30 ft

For more complete information on Cat products, dealer services, and industry solutions, visit us on the web at www.cat.com

QEHQ2383 (02/18)
HRC

Materials and specifications are subject to change without notice. Featured machines in photos may include additional equipment.

©2018 Caterpillar Inc.
All Rights Reserved.

CAT, CATERPILLAR, ACERT, BUILT FOR IT, their respective logos, "Caterpillar Yellow" and the "Power Edge" trade dress, as well as corporate and product identity used herein, are trademarks of Caterpillar and may not be used without permission.