

# 352F LRE

Hydraulic Excavator



## Engine

Engine Model	Cat® C13 ACERT™	
Net Power – ISO 9249	304 kW	408 hp
Engine Power – ISO 14396	317 kW	425 hp

## Working Range

Maximum Reach at Ground Level	19 640 mm	64'5"
-------------------------------	-----------	-------

## Drive

Maximum Travel Speed	4.7 km/h	2.9 mph
Maximum Drawbar Pull	330 kN	74,200 lbf

## Weights

Maximum Weight	59 400 kg	130,954 lb
----------------	-----------	------------

## Introduction

*The Cat 352F LRE machine is built to keep your production numbers up and your owning and operating costs down. The real power comes from the enhanced hydraulic system, which allows you to move tons of material all day long with a great deal of speed and precision. When you add in a quiet operator environment that keeps you comfortable and productive, service points that make your routine maintenance easy, and multiple Cat work tools that help you take on a variety of jobs, you simply won't find a better long reach excavation machine.*

## Contents

Key Features .....	2
Specifications .....	4
Standard Equipment .....	12
Optional Equipment .....	13
Notes .....	14



### Performance

- The C13 ACERT engine meets U.S. EPA Tier 4 Final and EU Stage IV emission standards.
- Automatic engine speed control lowers rpm based on load for reduced fuel consumption.
- Power modes help you more actively manage fuel consumption.

### Durable Structures

- Booms and sticks are built with internal baffle plates and are stress relieved for added durability; each undergoes ultrasound inspection to ensure quality and reliability.
- Front linkage pins have thick chrome plating, giving them high wear resistance even under water.
- Heavy-duty wide undercarriage provides a stable, rugged platform for long reach digging and loading applications.
- Track shoes, links, rollers, idlers, and final drives are built with high-tensile strength steel.
- Grease-lubricated track link protects moving parts by keeping water, debris, and dust out and grease sealed in to deliver longer wear life and reduced noise when traveling.
- Optional guide guards help maintain track alignment to improve the machine's overall performance – whether you're traveling on a flat, heavy bed of rock or a steep, wet field of mud.

### Maintenance

- Routine maintenance items like grease points and fluid taps are easy to reach at ground level.
- The side-by-side cooling system enables easy cleaning.
- Multiple S-O-S<sup>SM</sup> ports and pressure diagnostic taps help prevent maintenance downtime.

# Key Features

Built-in benefits and available options



## Comfort

- The full-size roll-over protective structure (ROPS) certified cab is quiet and comfortable.
- Seats are adjustable and feature air suspension and heated and cooled options.
- The LCD monitor is easy to navigate and programmable in 44 languages.

## Versatility

- Exclusive Cat attachments allow you to take on a variety of work – quickly and efficiently.
- A Cat coupler lets you swap between attachments in seconds without leaving the cab.
- Optional Tool Control remembers pressures and flows for up to 20 tools to enhance uptime.

## Safety

- Smart refuel fills the machine quickly from an external fuel source; it automatically stops when the fuel tank is full or the fuel source is empty.
- The rearview and sideview cameras enhance visibility to help make operators more efficient.
- Anti-skid plates reduce slipping hazards in all types of weather conditions.

# 352F LRE Hydraulic Excavator Specifications

## Engine

Engine Model	Cat C13 ACERT	
Gross Power – SAE J1995	322 kW	432 hp
Engine Power – ISO 14396	317 kW	425 hp
Net Power – ISO 9249	304 kW	408 hp
Bore	130 mm	5.1 in
Stroke	157 mm	6.2 in
Displacement	12.5 L	763 in <sup>3</sup>

## Hydraulic System

Main System – Maximum Flow (total)	770 L/min	203 gal/min
Swing System – Maximum Flow	385 L/min	102 gal/min
Maximum Pressure – Equipment	35 000 kPa	5,076 psi
Maximum Pressure – Equipment (Lift mode)	38 000 kPa	5,511 psi
Maximum Pressure – Travel	35 000 kPa	5,076 psi
Maximum Pressure – Swing	27 500 kPa	3,989 psi
Auxiliary Circuit – High Pressure	300 L/min	79 gal/min
Auxiliary Circuit – Medium Pressure	45 L/min	12 gal/min
Pilot System – Maximum Flow	27 L/min	7 gal/min
Pilot System – Maximum Pressure	4120 kPa	598 psi
Boom Cylinder – Bore	170 mm	6.7 in
Boom Cylinder – Stroke	3748 mm	147.6 in
Stick Cylinder – Bore	190 mm	7.5 in
Stick Cylinder – Stroke	4306 mm	169.5 in
B1 Bucket Cylinder – Bore	120 mm	4.7 in
B1 Bucket Cylinder – Stroke	2788 mm	109.8 in

## Air Conditioning System

The air conditioning system on this machine contains the fluorinated greenhouse gas refrigerant R134a (Global Warming Potential = 1430). The system contains 1.00 kg of refrigerant, which has a CO<sub>2</sub> equivalent of 1.430 metric tonnes.

## Drive

Maximum Travel Speed	4.7 km/h	2.91 mph
Maximum Drawbar Pull	330 kN	74,200 lbf

## Swing

Swing Speed	8.7 rpm	
Maximum Swing Torque	187 kN·m	137,924 lbf·ft

## Service Refill Capacities

Fuel Tank Capacity	720 L	190 gal
Cooling System	50 L	13.2 gal
Engine Oil (with filter)	38 L	10 gal
Swing Drive (each)	10 L	2.6 gal
Final Drive (each)	15 L	4 gal
Hydraulic System (including tank)	570 L	151 gal
Hydraulic Tank	407 L	108 gal
DEF Tank	41 L	11 gal

## Track

Number of Shoes (each side)	52 pieces
Number of Track Rollers (each side)	9 pieces
Number of Carrier Rollers (each side)	3 pieces

## Sound

Exterior Sound Power Level – ISO 6395:2008*	106 dB(A)
Operator Sound Pressure Level – ISO 6396:2008	69 dB(A)

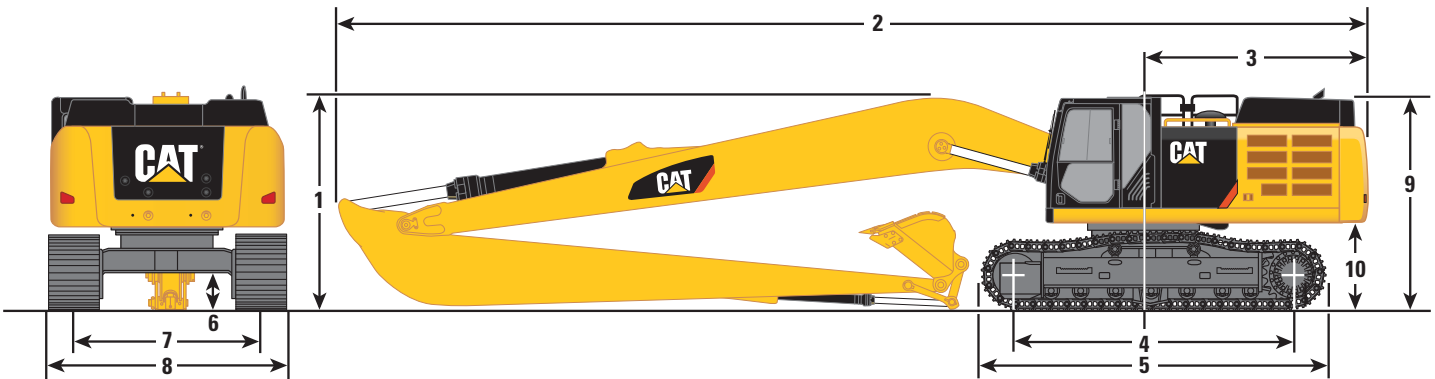
- Hearing protection may be needed when operating with an open operator station and cab (when not properly maintained or doors/windows open) for extended periods or in a noisy environment.

\* As per European Union Directive 200/14/EC as amended by 2005/88/EC.

# 352F LRE Hydraulic Excavator Specifications

## Dimensions

All dimensions are approximate.



### Boom Option

**LRE Boom**  
11.5 m (37'9")

### Stick Option

**LRE Stick**  
8.5 m (27'11")

<b>1</b> Shipping Height*	3740 mm	12'3"
<b>2</b> Shipping Length	16 460 mm	54'0"
<b>3</b> Tail Swing Radius	3760 mm	12'4"
<b>4</b> Length to Center of Rollers	4340 mm	14'3"
<b>5</b> Track Length	5380 mm	17'8"
<b>6</b> Ground Clearance, including Shoe Lug Height	710 mm	2'4"
Ground Clearance, not including Shoe Lug Height	740 mm	2'5"
<b>7</b> Track Gauge		
Long Variable Gauge Undercarriage (expanded)	3720 mm	12'3"
Long Variable Gauge Undercarriage (retracted)	3220 mm	10'7"
<b>8</b> Transport Width without Steps		
Long Variable Gauge Undercarriage (expanded)		
600 mm (24") Shoes	4320 mm	14'2"
750 mm (30") Shoes	4470 mm	14'8"
900 mm (35") Shoes	4620 mm	15'2"
Long Variable Gauge Undercarriage (retracted)		
600 mm (24") Shoes	3820 mm	12'6"
750 mm (30") Shoes	3970 mm	13'0"
900 mm (35") Shoes	4120 mm	13'6"
<b>9</b> Cab Height	3390 mm	11'2"
<b>10</b> Counterweight Clearance**	1450 mm	4'9"
Bucket Type		GD
Bucket Part Number		347-6708
Bucket Capacity	1.19 m <sup>3</sup>	1.56 yd <sup>3</sup>
Bucket Tip Radius	1557 mm	5'1"

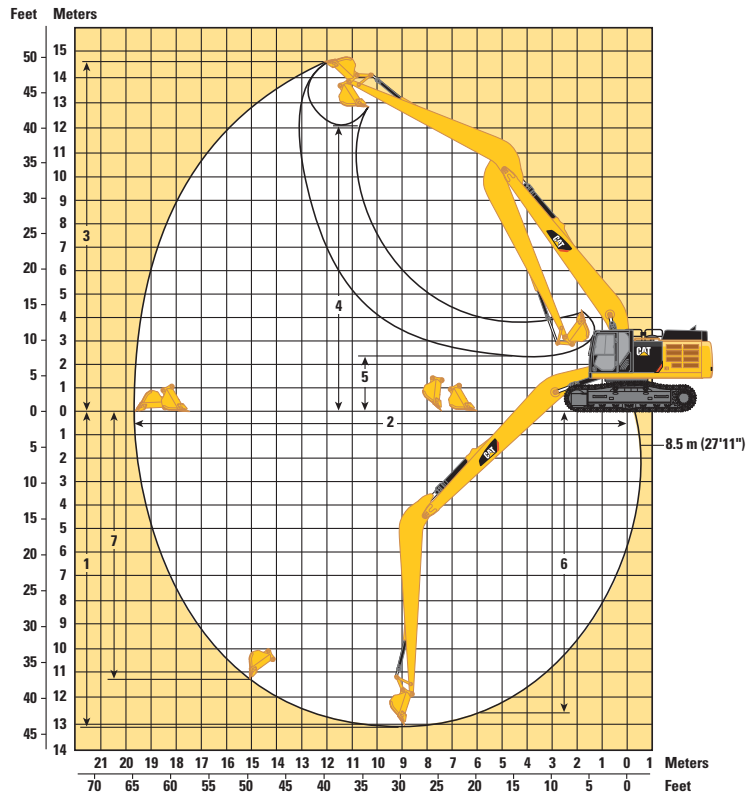
\*Including shoe lug height.

\*\*Without shoe lug height.

# 352F LRE Hydraulic Excavator Specifications

## Working Ranges

All dimensions are approximate.



### Boom Option

**LRE Boom**  
11.5 m (37'9")

### Stick Option

**LRE Stick**  
8.5 m (27'11")

<b>1</b> Maximum Digging Depth	13 040 mm	42'9"
<b>2</b> Maximum Reach at Ground Level	19 640 mm	64'5"
Maximum Radius of Working Equipment	19 790 mm	64'11"
<b>3</b> Maximum Cutting Height	14 700 mm	48'3"
<b>4</b> Maximum Loading Height	12 030 mm	39'6"
<b>5</b> Minimum Loading Height	2250 mm	7'5"
<b>6</b> Maximum Depth Cut for 2440 mm (8'0") Level Bottom	12 600 mm	41'4"
<b>7</b> Maximum Vertical Wall Digging Depth	11 280 mm	37'0"
Bucket Digging Force (ISO)	141 kN	31,600 lbf
Stick Digging Force (ISO)	104 kN	23,400 lbf
Bucket Digging Force (SAE)	125 kN	28,000 lbf
Stick Digging Force (SAE)	103 kN	23,100 lbf
Bucket Type	GD	
Bucket Part Number	347-6708	
Bucket Capacity	1.19 m <sup>3</sup>	1.56 yd <sup>3</sup>
Bucket Tip Radius	1557 mm	5'1"



# 352F LRE Hydraulic Excavator Specifications

## Operating Weights and Ground Pressures

	900 mm (35") Triple Grouser Shoes		750 mm (30") Triple Grouser Shoes		600 mm (24") Triple Grouser Shoes	
<b>Operating Weights</b>	59 400 kg	130,954 lb	58 600 kg	129,190 lb	57 800 kg	127,427 lb
<b>Ground Pressures</b>	69 kPa	10.0 psi	82 kPa	11.8 psi	101 kPa	14.6 psi

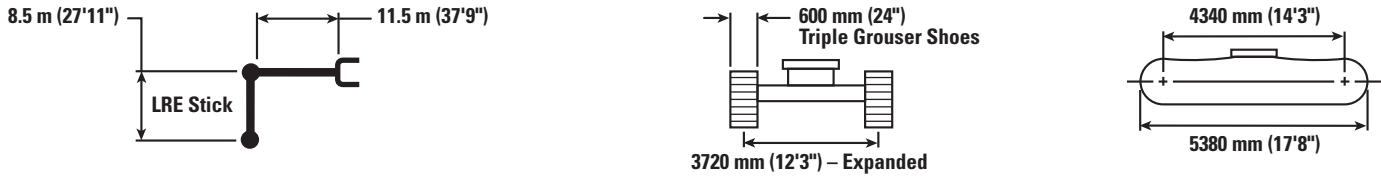
## Major Component Weights

	kg	lb
Base Machine (with boom cylinder, without counterweight, front linkage and track)	29 844	65,795
Lower Structure (without track)		
Long Variable Gauge Undercarriage	14 504	31,976
Upper Structure (with boom cylinder, without front linkage and counterweight)		
For 12 mt (13.2 t) Counterweight	15 340	33,818
Counterweight		
12 mt (13.2 t)	12 000	26,455
Boom (includes lines, pins and stick cylinder)		
LRE Boom – 11.5 m (37'9")	5800	12,787
Stick (includes lines, pins and bucket cylinder)		
LRE Stick – 8.5 m (27'11")	3300	7,275
Track Shoes		
900 mm (35") Triple Grouser Shoes	6700	14,770
750 mm (30") Triple Grouser Shoes	5940	13,095
600 mm (24") Triple Grouser Shoes	5190	11,441
Bucket		
GD 1.19 m <sup>3</sup> (1.56 yd <sup>3</sup> )	773	1,706

Base machine includes 75 kg (165 lb) operator weight, 90% fuel weight, and undercarriage with center guard.

# 352F LRE Hydraulic Excavator Specifications

## LRE Fronts Capacities – Counterweight: 12 mt (13.2 t) – without Bucket – Heavy Lift: On



		3000 mm/120 in		4500 mm/180 in		6000 mm/240 in		7500 mm/300 in		9000 mm/360 in		mm in		
13 500 mm 540 in	kg lb											*2950 *2950	14 400	
12 000 mm 480 in	kg lb											*2900 *6,350	15 460 610	
10 500 mm 420 in	kg lb											*2850 *6,300	16 300 640	
9000 mm 360 in	kg lb											*2900 *6,350	16 970 670	
7500 mm 300 in	kg lb											*2950 *6,450	17 480 690	
6000 mm 240 in	kg lb											*3050 *6,650	17 860 710	
4500 mm 180 in	kg lb											*3150 *6,950	18 100 720	
3000 mm 120 in	kg lb			*13 200 *31,750	*13 200 *31,750	*15 700 *33,800	*15 700 *33,800	*12 150 *26,250	*12 150 *26,250	*10 000 *21,600	*10 000 *21,600	*3350 *7,300	18 210 720	
1500 mm 60 in	kg lb			*7700 *17,750	*7700 *17,750	*17 100 *36,900	*17 100 *36,900	*13 100 *28,300	*13 100 *28,300	*10 650 *23,000	*10 650 *23,000	*3550 *7,750	18 190 720	
0 mm 0 in	kg lb	*4100 *9,150	*4100 *9,150	*7150 *16,150	*7150 *16,150	*13 250 *30,450	*13 250 *30,450	*13 750 *29,700	13 300 28,700	*11 100 *24,050	10 400 22,450	*3800 *8,400	3600 7,950	18 060 710
-1500 mm -60 in	kg lb	*5450 *12,100	*5450 *12,100	*7750 *17,400	*7750 *17,400	*12 300 *27,950	*12 300 *27,950	*14 050 *30,400	12 600 27,100	*11 400 *24,700	9850 21,200	*4150 *9,200	3600 7,950	17 790 700
-3000 mm -120 in	kg lb	*6800 *15,100	*6800 *15,100	*8800 *19,700	*8800 *19,700	*12 600 *28,550	*12 600 *28,550	*14 050 *30,350	12 150 26,150	11 200 24,100	9450 20,350	4400 9,650	3700 8,100	17 390 690
-4500 mm -180 in	kg lb	*8150 *18,200	*8150 *18,200	*10 100 *22,600	*10 100 *22,600	*13 600 *30,750	*13 600 *30,750	*13 700 *29,650	11 950 25,650	10 950 23,600	9250 19,850	4550 10,050	3800 8,400	16 840 670
-6000 mm -240 in	kg lb	*9600 *21,400	*9600 *21,400	*11 550 *25,950	*11 550 *25,950	*15 000 *33,950	*15 000 *33,950	*13 100 *28,300	11 900 25,600	10 850 23,400	9150 19,650	4850 10,650	4050 8,950	16 130 640
-7500 mm -300 in	kg lb			*13 200 *29,750	*13 200 *29,750	*14 700 *31,700	*14 700 *31,700	*12 200 *26,250	12 000 25,800	*10 250 *22,100	9150 19,750	5250 11,650	4450 9,800	15 250 600
-9000 mm -360 in	kg lb			*15 100 *33,450	*15 100 *33,450	*12 950 *27,750	*12 950 *27,750	*10 900 *23,400	*10 900 *23,400	*9300 *19,850	*9300 *19,850	*5300 *11,650	5000 11,150	14 140 560
-10 500 mm -420 in	kg lb							*9200 *19,500	*9200 *19,500	*7900 *16,700	*7900 *16,700	*5100 *11,200	*5100 *11,200	12 770 500



ISO 10567



\*Indicates that the load is limited by hydraulic lifting capacity rather than tipping load. The above loads are in compliance with hydraulic excavator lift capacity standard ISO 10567:2007. They do not exceed 87% of hydraulic lifting capacity or 75% of tipping load. Weight of all lifting accessories must be deducted from the above lifting capacities. Lifting capacities are based on the machine standing on a firm, uniform supporting surface. The use of a work tool attachment point to handle/lift objects, could affect the machine lift performance.

Lift capacity stays with ±5% for all available track shoes.

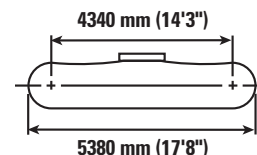
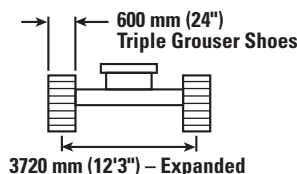
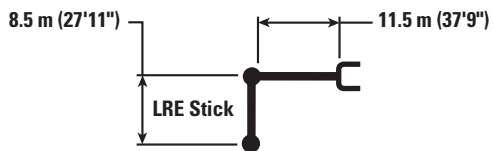
Always refer to the appropriate Operation and Maintenance Manual for specific product information.

(continued on next page)



# 352F LRE Hydraulic Excavator Specifications

## LRE Fronts Capacities – Counterweight: 12 mt (13.2 t) – without Bucket – Heavy Lift: On (continued)



		10 500 mm/420 in		12 000 mm/480 in		13 500 mm/540 in		15 000 mm/600 in		16 500 mm/660 in		18 000 mm/720 mm		mm in		
13 500 mm 540 in	kg lb													*2950	*2950	14 400
12 000 mm 480 in	kg lb							*3350 *6,550	*3350 *6,550					*2900 *6,350	*2900 *6,350	15 460 610
10 500 mm 420 in	kg lb							*4150 *8,550	*4150 *8,550					*2850 *6,300	*2850 *6,300	16 300 640
9000 mm 360 in	kg lb							*4750 *10,000	*4750 *10,000	*3500 *6,800	*3500 *6,800			*2900 *6,350	*2900 *6,350	16 970 670
7500 mm 300 in	kg lb					*5950 *12,900	*5950 *12,900	*5350 *11,400	*5350 *11,400	*4200 *8,450	*4200 *8,450			*2950 *6,450	*2950 *6,450	17 480 690
6000 mm 240 in	kg lb			*6750 *14,650	*6750 *14,650	*6150 *13,350	*6150 *13,350	*5700 *12,350	*5700 *12,350	*4800 *9,850	*4800 *9,850			*3050 *6,650	*3050 *6,650	17 860 710
4500 mm 180 in	kg lb	*8000 *17,350	*8000 *17,350	*7100 *15,400	*7100 *15,400	*6400 *13,900	*6400 *13,900	*5850 *12,700	5650 12,100	*5400 *11,150	4750 10,100	*3350 *3350	*3150 *6,950	*3150 *6,950	18 100 720	
3000 mm 120 in	kg lb	*8500 *18,400	*8500 *18,400	*7450 *16,150	*7450 *16,150	*6650 *14,400	6450 13,900	*6050 *13,050	5400 11,600	5300 11,400	4550 9,750	*3700 *3700	*3350 *7,300	*3350 *7,300	18 210 720	
1500 mm 60 in	kg lb	*8950 *19,400	*8950 *19,350	*7800 *16,850	7350 15,850	*6900 *14,900	6150 13,200	6050 12,950	5150 11,100	5150 11,000	4400 9,350	*3950 3750	*3550 *7,750	*3550 *7,750	18 190 720	
0 mm 0 in	kg lb	*9350 *20,200	8400 18,150	*8050 *17,400	6950 14,950	6800 14,650	5850 12,550	5800 12,450	4950 10,600	5000 10,650	4250 9,050	*3950 3650	*3800 *8,400	3600 7,950	18 060 710	
-1500 mm -60 in	kg lb	9400 20,200	8000 17,200	7800 16,750	6650 14,250	6550 14,100	5600 12,000	5600 12,050	4750 10,200	4850 10,400	4100 8,750		*4150 *9,200	3600 7,950	17 790 700	
-3000 mm -120 in	kg lb	9050 19,450	7650 16,500	7500 16,150	6350 13,700	6350 13,700	5400 11,600	5450 11,750	4600 9,900	4750 10,150	4000 8,550		4400 9,650	3700 8,100	17 390 690	
-4500 mm -180 in	kg lb	8850 19,000	7450 16,050	7350 15,800	6200 13,350	6250 13,400	5250 11,300	5350 11,550	4500 9,700	4700 10,050	3950 8,450		4550 10,050	3800 8,400	16 840 670	
-6000 mm -240 in	kg lb	8750 18,800	7350 15,850	7250 15,600	6100 13,150	6150 13,250	5200 11,150	5350 11,450	4500 9,650				4850 10,650	4050 8,950	16 130 640	
-7500 mm -300 in	kg lb	*8750 *18,800	7350 15,850	7250 15,650	6100 13,200	6200 13,300	5200 11,200	5350 11,200	4500				5250 11,650	4450 9,800	15 250 600	
-9000 mm -360 in	kg lb	*7950 *16,950	7450 16,100	*6800 *14,450	6200 13,400	*5750 *12,100	5300 11,450						*5300 *11,650	5000 11,150	14 140 560	
-10 500 mm -420 in	kg lb	*6750 *14,200	*6750 *14,200	*5650 *11,800	*5650 *11,800								*5100 *11,200	*5100 *11,200	12 770 500	



ISO 10567



\*Indicates that the load is limited by hydraulic lifting capacity rather than tipping load. The above loads are in compliance with hydraulic excavator lift capacity standard ISO 10567:2007. They do not exceed 87% of hydraulic lifting capacity or 75% of tipping load. Weight of all lifting accessories must be deducted from the above lifting capacities. Lifting capacities are based on the machine standing on a firm, uniform supporting surface. The use of a work tool attachment point to handle/lift objects, could affect the machine lift performance.

Lift capacity stays with ±5% for all available track shoes.

Always refer to the appropriate Operation and Maintenance Manual for specific product information.

# 352F LRE Hydraulic Excavator Specifications

## Bucket Specifications and Compatibility – North America

	Linkage	Width		Capacity		Weight		Fill	Long Reach Excavation
		mm	in	m <sup>3</sup>	yd <sup>3</sup>	kg	lb	%	
<b>Pin-On (No Quick Coupler)</b>									
General Duty Capacity (GDC)	B	600	24	0.55	0.72	617	1,360	100	●
	B	750	30	0.75	0.98	708	1,561	100	●
	B	900	36	0.95	1.24	784	1,729	100	●
General Duty Capacity (GDC) – WT	B	600	24	0.55	0.72	615	1,356	100	●
	B	750	30	0.75	0.98	708	1,561	100	●
	B	900	36	0.95	1.24	784	1,728	100	●
Heavy Duty (HD)	B	600	24	0.46	0.61	648	1,428	100	●
	B	750	30	0.64	0.84	747	1,647	100	●
	B	900	36	0.81	1.06	824	1,816	100	●
	B	1050	42	1.00	1.31	878	1,935	100	●
Ditch Cleaning (DC)	B	1500	60	1.01	1.32	651	1,436	100	●
Ditch Cleaning – Tilt (DCT)	B	1800	72	0.90	1.83	1105	2,436	100	●
	B	2000	79	1.11	1.61	1161	2,560	100	●
Maximum load with pin-on (payload + bucket)								kg	3500
								lb	7,716
<b>With Cat Pin Grabber Coupler</b>									
General Duty Capacity (GDC)	B	600	24	0.55	0.72	617	1,360	100	●
	B	750	30	0.75	0.98	708	1,561	100	●
	B	900	36	0.95	1.24	784	1,729	100	●
General Duty Capacity (GDC) – WT	B	600	24	0.55	0.72	615	1,356	100	●
	B	750	30	0.75	0.98	708	1,561	100	●
	B	900	36	0.95	1.24	784	1,728	100	●
Heavy Duty (HD)	B	600	24	0.46	0.61	648	1,428	100	●
	B	750	30	0.64	0.84	747	1,647	100	●
	B	900	36	0.81	1.06	824	1,816	100	●
	B	1050	42	1.00	1.31	878	1,935	100	●
Ditch Cleaning (DC)	B	1500	60	1.01	1.32	651	1,436	100	●
Ditch Cleaning – Tilt (DCT)	B	1800	72	0.90	1.83	1105	2,436	100	●
	B	2000	79	1.11	1.61	1161	2,560	100	⊙
Maximum load with coupler (payload + bucket)								kg	3078
								lb	6,787

The above loads are in compliance with hydraulic excavator standard EN474-5:2006 + A3:2013, they do not exceed 87% of hydraulic lifting capacity or 75% of tipping capacity with front linkage fully extended at ground line with bucket curled.

Capacity based on ISO 7451:2007.

Bucket weight with long tips.

### Maximum Material Density:

- 2100 kg/m<sup>3</sup> (3,500 lb/yd<sup>3</sup>)
- ⊙ 1800 kg/m<sup>3</sup> (3,000 lb/yd<sup>3</sup>)

Caterpillar recommends using appropriate work tools to maximize the value customers receive from our products. Use of work tools, including buckets, which are outside of Caterpillar's recommendations or specifications for weight, dimensions, flows, pressures, etc. may result in less-than-optimal performance, including but not limited to reductions in production, stability, reliability, and component durability. Improper use of a work tool resulting in sweeping, prying, twisting and/or catching of heavy loads will reduce the life of the boom and stick.

# 352F LRE Hydraulic Excavator Specifications

## Bucket Specifications and Compatibility – Europe

	Linkage	Width		Capacity		Weight		Fill	Long Reach Excavation
		mm	in	m <sup>3</sup>	yd <sup>3</sup>	kg	lb	%	
<b>Without Pin Grabber Coupler</b>									
Cat General Duty (GD)	B	1200	48	1.19	1.56	800	1,763	100	●
	B	1300	51	1.30	1.71	832	1,833	100	●
Ditch Cleaning (DC)	B	1800	72	1.24	1.62	740	1,631	100	●
	B	2010	79	1.18	1.54	800	1,764	100	●
Tilting Ditch Cleaning (TDC)	B	2010	79	1.15	1.50	1095	2,414	100	●
Maximum load with pin on (payload + bucket)								kg	3500
								lb	7,716
<b>With Pin Grabber Coupler</b>									
Cat General Duty (GD)	B	1200	48	1.19	1.56	800	1,763	100	⊙
	B	1300	51	1.30	1.71	832	1,833	100	⊙
Ditch Cleaning (DC)	B	1800	72	1.24	1.62	740	1,631	100	⊙
	B	2010	79	1.18	1.54	800	1,764	100	⊙
Tilting Ditch Cleaning (TDC)	B	2010	79	1.15	1.50	1095	2,414	100	⊙
Maximum load with coupler (payload + bucket)								kg	3500
								lb	7,716
<b>With Quick Coupler (CW40)</b>									
Cat General Duty (GD)	B	1050	42	1.00	1.31	704	1,551	100	●
	B	1200	48	1.19	1.55	764	1,683	100	●
Ditch Cleaning (DC)	B	2000	78	1.27	1.66	696	1,534	100	●
Maximum load with coupler (payload + bucket)								kg	2345
								lb	5,170

The above loads are in compliance with hydraulic excavator standard EN474-5:2006 + A3:2013, they do not exceed 87% of hydraulic lifting capacity or 75% of tipping capacity with front linkage fully extended at ground line with bucket curled.

Capacity based on ISO 7451:2007.

Bucket weight with long tips.

### Maximum Material Density:

● 2100 kg/m<sup>3</sup> (3,500 lb/yd<sup>3</sup>)

⊙ 1800 kg/m<sup>3</sup> (3,000 lb/yd<sup>3</sup>)

Caterpillar recommends using appropriate work tools to maximize the value customers receive from our products. Use of work tools, including buckets, which are outside of Caterpillar's recommendations or specifications for weight, dimensions, flows, pressures, etc. may result in less-than-optimal performance, including but not limited to reductions in production, stability, reliability, and component durability. Improper use of a work tool resulting in sweeping, prying, twisting and/or catching of heavy loads will reduce the life of the boom and stick.

# 352F LRE Standard Equipment

## Standard Equipment

Standard equipment may vary. Consult your Cat dealer for details.

### ENGINE

- Cat C13 ACERT diesel engine
- Biodiesel capable up to B20
- Meets Tier 4 Final and Stage IV emission standards
- 2300 m (7,500 ft) altitude capability
- Electric priming pump
- Automatic engine speed control
- Standard, economy and high power modes
- Two-speed travel
- Side-by-side cooling system
- Radial seal air filter
- Primary filter with water separator and water separator indicator switch
- Fuel differential indicator switch in fuel line
- 2×6 micron main filters
- 1×10 micron primary fuel line filter

### HYDRAULIC SYSTEM

- Regeneration circuit for boom and stick
- Reverse swing dampening valve
- Automatic swing parking brake
- High-performance hydraulic return filter

### CAB

- Pressurized operator station with positive filtration
- Mirror package
- Sliding upper door window
- Glass-breaking safety hammer
- Removable lower windshield within cab storage bracket
- Coat hook
- Beverage holder
- Literature holder
- Radio with MP3 auxiliary audio port
- Two stereo speakers
- Storage shelf suitable for lunch or toolbox
- Color LCD display with warning, filter/fluid change, and working hour information
- Adjustable armrest
- Height adjustable joystick consoles
- Neutral lever (lock out) for all controls
- Travel control pedals with removable hand levers
- Two power outlets, 10 amp (total)
- Laminated glass front upper window and tempered other windows

### UNDERCARRIAGE

- Grease Lubricated Track GLT4
- Towing eye on base frame
- Heavy-duty track rollers
- Track motor guards

### ELECTRICAL

- 80 amp alternator
- Circuit breaker

### LIGHTS

- Boom light
- Cab lights with time delay
- Exterior lights integrated into storage box

### SECURITY

- Cat one key security system
- Door locks
- Cap locks on fuel and hydraulic tanks
- Lockable external tool/storage box
- Signaling/warning horn
- Secondary engine shutoff switch
- Openable skylight for emergency exit
- Rearview and sideview cameras

## Optional Equipment

Optional equipment may vary. Consult your Cat dealer for details.

### ENGINE

- Electric refueling pump with auto shut off
- Starting kit, cold weather, -32° C (-26° F)
- Jump start receptacle
- Quick drains, engine and hydraulic oil

### HYDRAULIC SYSTEM

- Control pattern quick-changer, two way
- Additional circuit
- Boom and stick lines
- High-pressure line
- Medium-pressure line
- Cat quick coupler line – high- and medium-pressure capable
- Quick coupler for high pressure
- Tool control system

### CAB

- Cab hatch emergency exit
- Seat, high-back air suspension with heater and cooling
- Seat, high-back air suspension with heater
- Seat, high-back mechanical suspension
- Sunscreen
- Windshield wiper, lower with washer
- AM/FM radio
- Air pre-filter
- Travel alarm
- Left foot switch
- Left pedal
- Straight travel pedal

### UNDERCARRIAGE

- Long HD Variable Gauge undercarriage:
  - 600 mm (24") triple grouser shoes, PPR2
  - 750 mm (30") triple grouser shoes, PPR2
  - 900 mm (35") triple grouser shoes, PPR2
- Guard, full length
- Guard, heavy-duty bottom
- Center track guiding guard
- Segmented (three piece) track guiding guard
- Fabricating idler
- Casting idler

### COUNTERWEIGHT

- 12.0 mt (13.2 t)

### FRONT LINKAGE

- Bucket linkage
  - TB family without lifting eye
- Long Reach boom
  - 11.5 m (37'9") boom
  - 8.5 m (27'11") stick

### LIGHTS

- Working lights, cab mounted with time delay
- HID lights, cab mounted with time delay
- Halogen boom lights
- HID boom lights

### SECURITY

- FOGS, bolt-on
- Guard, cab front, mesh
- Guard, vandalism

### TECHNOLOGY

- Cat GRADE
- Product Link™







For more complete information on Cat products, dealer services, and industry solutions, visit us on the web at [www.cat.com](http://www.cat.com)

AEHQ8184 (02-2019)  
(Eur, N Am)

© 2019 Caterpillar  
All rights reserved

Materials and specifications are subject to change without notice. Featured machines in photos may include additional equipment. See your Cat dealer for available options.

CAT, CATERPILLAR, LET'S DO THE WORK, their respective logos, "Caterpillar Yellow," the "Power Edge" and Cat "Modern Hex" trade dress as well as corporate and product identity used herein, are trademarks of Caterpillar and may not be used without permission.

