

# COST-SAVING EFFICIENCY FOR DAY TO DAY NEEDS

Easy to use and maintain, the new GCS Series is a hard-working 'every day' hammer range for operators looking for higher efficiency and a lower cost per hour solution.



## GAS-FIRED DESIGN

Compressed nitrogen forces the piston down, achieving optimum and consistent impact power



## SILENCED

A protective, fully enclosed housing cuts down noise for the operator and the local environment



## AUTOMATIC SHUT-OFF

The piston stops cycling when no material is present, eliminating blank firing and protecting the hammer



## LOCATOR

Tracks location (and utilization) of work tools across all sites for maintenance planning, and to reduce loss

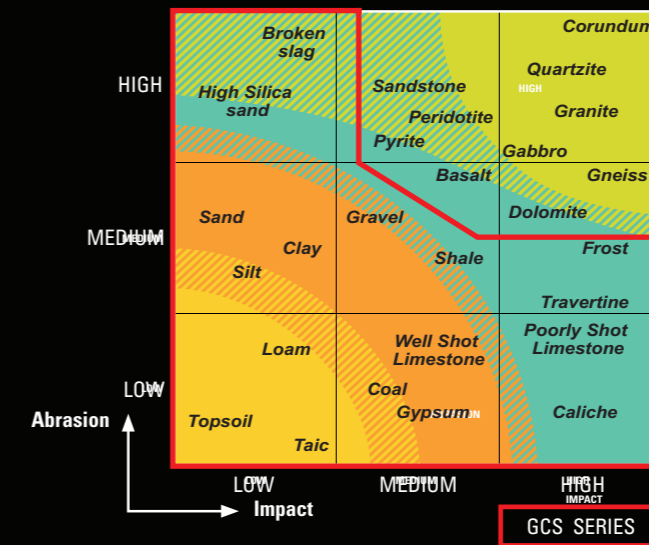


## RENT OR LEASE

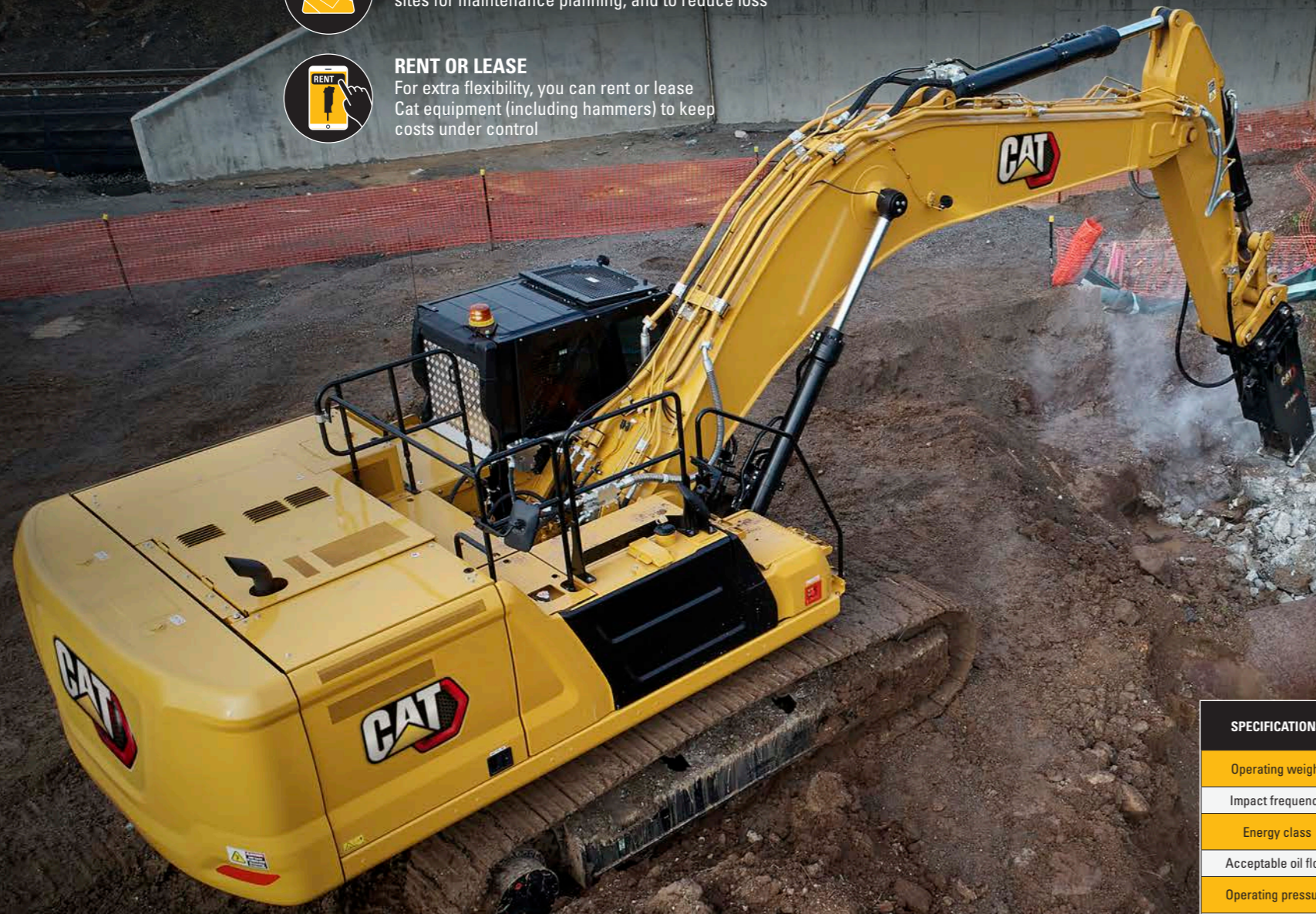
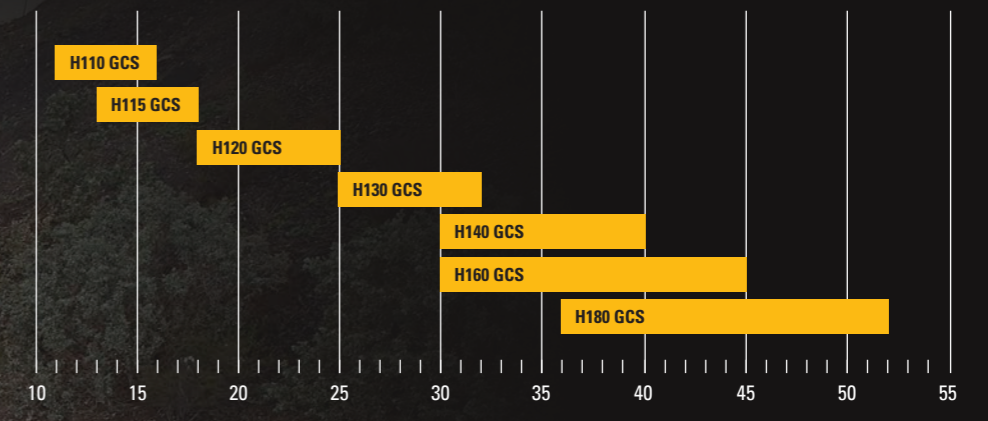
For extra flexibility, you can rent or lease Cat equipment (including hammers) to keep costs under control

## RECOMMENDED HAMMER BY MATERIAL TYPE

Recommended Material for Bucket Durability



## CARRIER WEIGHT FROM 13 TON TO 52 TON.



SPECIFICATIONS		H110 GCS	H115 GCS	H120 GCS	H130 GCS	H140 GCS	H160 GCS	H180 GCS
Operating weight	kg (lb)	1203-1228 (2647-2701)	1307-1331 (2875-2928)	1754-1785 (3859-3927)	2451-2487 (5392-5471)	2981-3134 (6558-6895)	3090-3125 (6815 - 6890)	3900-3935 (8600 - 8675)
Impact frequency	blows/min.	450 - 650	450 - 800	400 - 800	350 - 700	250 - 550	200 - 450	200 - 400
Energy class	J (ft.lb.)	2000 (1475)	3000 (2212)	4000 (2950)	6000 (4425)	7500 (5531)	10170 (7501)	14578 (10752)
Acceptable oil flow	lpm (gpm)	80-100 (21-26)	90-120 (24-32)	125-150 (33-40)	160-190 (42-50)	180-220 (48-58)	190-260	250-300
Operating pressure	kPa (psi)	14000-16000 (2030-2320)	15000-17000 (2175-2465)	16000-18000 (2320-2610)	16000-18000 (2320-2610)	16000-18000 (2320-2610)	16000-18000 (2320-2610)	16000-18000 (2320-2610)
Diameter	mm (in)	72 (2.83)	120 (4.72)	135 (5.31)	150 (5.91)	153 (6,02)	160 (6,30)	180 (7,09)