

966 GC

WHEEL LOADER



Engine Maximum Power	239 kW (321 hp)
Operating Weight	21 781 kg (48,018 lb)
Bucket Capacities	3.20–7.10 m ³ (4.19–9.30 yd ³)

Meets U.S. EPA Tier 4 Final, EU Stage V, Korea Tier 5, China Nonroad Stage IV, and Japan 2014 (Tier 4 Final) emission standards.



The new Cat® 966 GC Wheel Loader is easy to own and operate. It offers low fuel consumption with an on-demand fan, load-sensing hydraulics, intuitive controls, and performance series buckets. This machine is built to be just the right machine for a broad range of applications. Great machine performance combined with the low owning and operating costs makes the 966 GC the right choice for your business.

CAT® 966 GC

SIMPLY RIGHT FOR THE JOB



WHEEL LOADERS MADE FOR MORE

The 966 GC is a simple, reliable machine that is durable, fuel competitive, and economical.

- + PROVEN RELIABLE COMPONENTS FOR GREAT PERFORMANCE
- + INTUITIVE CONTROLS AND SIMPLE USER INTERFACE FOR EASY OPERATION
- + THE RIGHT MACHINE FOR A BROAD RANGE OF APPLICATIONS AT REDUCED OWNING COSTS
- + EMISSIONS COMPLIANCE WITHOUT WORK INTERRUPTION

POWERFUL EFFICIENCY

Low fuel consumption and exceptional production capabilities help you get the job done right for less.

PRODUCTIVE RESULTS

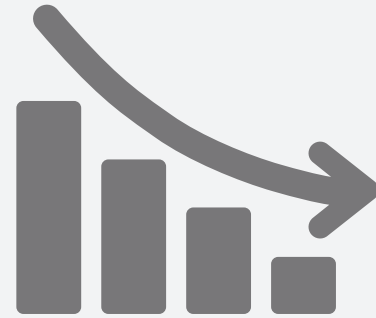
Purpose built to handle a wide range of applications on all your jobsites.

EASY SERVICEABILITY

Ground access to most of the daily and scheduled maintenance points make the machine safe, easy, and efficient to service.

ECONOMICAL SAVINGS

**THE 966 GC IS THE
SENSIBLE CHOICE
FOR YOUR BUSINESS.**



LOWER OWNING COSTS





POWER TRAIN

POWERFUL EFFICIENCY

Staying ahead of the competition, Caterpillar offers a wide variety of cutting-edge technology and components that are specifically built to save time and reduce fuel costs.

ENGINE AND EMISSIONS

Powered by a Cat engine and certified to meet emission standards, these machines feature the Engine Idle Management System (EIMS) to minimize idle RPM and fuel consumption. Auto Idle Shutdown will shut down engine after a preset time.

TRANSMISSION

The Cat planetary powershift transmission is a proven design, made in-house, for high reliability and long service life.

CONTROL VALVES

The well-known Cat electronic clutch is a pressure-compensated, single-clutch shifting system which allows smooth, efficient gear changes in all operating situations.

DURABLE AXLES

Heavy-duty axles with inboard final drives feature hydraulically activated wet-disc brakes. Optional axle oil coolers (AOC) are available for high-energy applications. The optional limited slip differential (LSD) is automatically activated and increases traction in poor underfoot conditions.

ON-DEMAND FAN

Variable speed fan adjusts to meet the cooling requirements of the machine, lowering fuel consumption, noise levels, and radiator plugging. In very dusty conditions, an optional reversing fan reduces cleaning needs.

PRODUCTIVE RESULTS

WORK SMART AND MOVE MORE

PERFORMANCE SERIES BUCKETS

Easy-to-load Performance Series Buckets also improve material retention and reduce dig times. These buckets significantly improve productivity and fuel efficiency, resulting in unsurpassed production capabilities with increased bucket fill factors by up to 10% compared to legacy designs.

LOAD SENSING HYDRAULICS

Load sensing hydraulic system produces flow and pressure for the implement system only when needed, improving machine productivity and resulting in lower fuel consumption. An optional third hydraulic function is also available to control a variety of work tools.

Z-BAR LINKAGE

The proven Z-bar linkage with cast cross-member and tilt lever combines digging efficiency and high breakout forces for superior production capabilities.



RIDE CONTROL SYSTEM

The optional ride control system improves ride, performance, and load retention when traveling over rough terrain and at higher speeds, lowering cycle times and boosting productivity.

OPTIONAL PRODUCT LINK™

Track asset location, hours, fuel usage, diagnostic codes, and idle time to improve your productivity and lower your operating costs.

CAT PAYLOAD KIT (Optional)*

Track productivity from the cab with quick access to information such as truck target weights, loads, and totals.

- + PROVEN ACCURACY
- + EASY CALIBRATION AND SETUP
- + COST-EFFECTIVE INSTALLATION
- + OPTIONAL ADVANCED PAYLOAD VERSION AVAILABLE FOR EXPANDED CAPABILITY

*Not legal for trade

TESTED, PROVEN, AND READY TO WORK.

EASY SERVICEABILITY



SERVICE ACCESS

The engine hood features large, wide-opening gull-wing doors for comfortable reach to all service points.

GREASE POINTS

Grease fittings for hard-to-reach pins are grouped conveniently for easy and quick preventive lubrication.

CATERPILLAR DESIGNED

Built on a long legacy of high performance and highly reliable wheel loaders, our machine components are designed and manufactured to Caterpillar quality standards.

RENOWNED SUPPORT

Your Cat dealer is always available to help you maximize machine uptime by providing global parts support, trained technicians, and Customer Value Agreements.

CAT AUTOLUBE SYSTEM

The new optional Cat Autolube System has a simple one-button control and includes fault flash function.

OPERATOR ENVIRONMENT

COMFORTABLE CAB, INTUITIVE CONTROLS

A spacious cab features easy, intuitive controls and excellent visibility, which provides a comfortable working environment.



ENTRY AND EXIT

Ladders are standard on both sides of the machine for easy access to the cab from the left-hand side and to service points from the right-hand side. The operator station is equipped with handrails for cab accessibility.



DISPLAY AND INTERFACE

Simple to operate, the complete user interface has been designed as an intuitive system, allowing the operator to monitor machine health.



VISIBILITY AND SAFETY

Extended windows with wide, flat, and distortion-free front windshield combined with rearview mirrors with spot mirrors offer excellent visibility. A front window cleaning platform kit is available for enhanced access to the windshield. A rearview camera is standard, and a windshield guard option is available. Reversing strobe light kits are available options for enhanced jobsite visibility.



EASY CONTROLS

The pilot-operated hydraulic controls deliver comfortable, low-effort operation. Single axis levers or joystick are available, and the adjustable steering column includes a manual shifter. Both options are equipped with remote transmission kick-down switches.



CLIMATE CONTROLLER

Air conditioning and louvered vents let the operator direct air flow. The fresh air and recirculation cab air filters allow for superior filtration and easy cleaning.



COMFORTABLE SEAT

The comfort cloth mechanical suspension seat provides a variety of adjustments with an arm and headrest. An air suspension seat option is available.

SUPPORT ALL YOUR JOBSITE NEEDS

For specific applications, you need a wheel loader that is purpose built for the job. Cat work tools are engineered to handle all of your specific worksite needs.



FUSION™ QUICK COUPLER



PERFORMANCE SERIES BUCKETS

The Fusion Quick Coupler System allows machines to use a wide range of tools that can each be picked up by machines of varying sizes. Fusion is designed to integrate the work tool and the machine by pulling the coupler and tool closer to the loader, increasing overall lift capability.

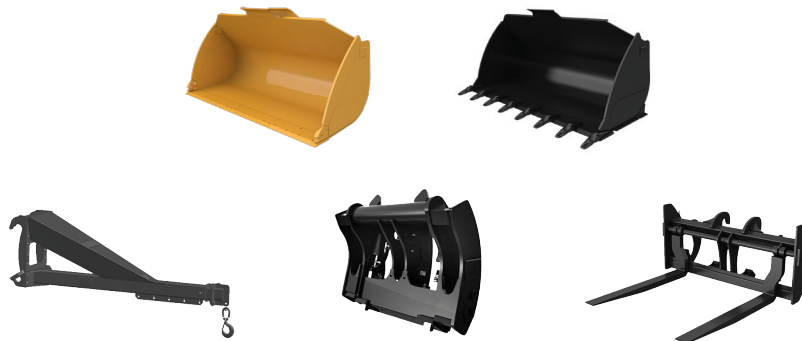
- + Improved machine performance
- + Unsurpassed durability
- + Good visibility

Performance Series Buckets use a system-based approach to balance bucket shape with the machine's lift and tilt capacity, weight, and linkage. A variety of bucket styles match the machine to the application and material moved.

- + Fuel efficient
- + Lower operating costs
- + Higher productivity

Work Tool Attachments for All Support Functions on Your Jobsite

A variety of pin-on and coupler attachments are available for the 966 GC model. Cat work tools are durable, reliable, and designed for performance and efficiency with your Cat wheel loader.



TECHNICAL SPECIFICATIONS

See cat.com for complete specifications.

ENGINE		
Engine Model	Cat C9.3B	
Engine Power @ 1,600 rpm – ISO 14396:2002	239 kW	321 hp
ISO 14396:2002 (DIN)	325 mhp (PS)	
Gross Power @ 1,600 rpm – SAE J1995:2014	242 kW	325 hp
SAE J1995:2014 (DIN)	329 mhp (PS)	
Net Power @ 1,600 rpm – ISO 9249:2007, SAE J1349:2011	218 kW	292 hp
ISO 9249:2007 (DIN)	296 mhp (PS)	
Engine Torque @ 1,200 rpm – ISO 14396:2002	1781 N·m	1,314 lbf·ft
Gross Torque @ 1,200 rpm – SAE J1995:2014	1799 N·m	1,327 lbf·ft
Net Torque @ 1,200 rpm – ISO 9249:2007, SAE J1349:2011	1673 N·m	1,234 lbf·ft
Bore – ISO 9249:2007	115 mm	4.53 in
Stroke	149 mm	5.87 in
Displacement	9.30 L	568 in ³

- Cat engine meets U.S. EPA Tier 4 Final, EU Stage V, Korea Tier 5, China Nonroad Stage IV, and Japan 2014 (Tier 4 Final) emission standards.
 - The net power advertised is the power available at the flywheel when the engine is equipped with fan, alternator, air cleaner, and aftertreatment.
 - Cat engines are compatible with the following renewable, alternative, and biodiesel* fuels that reduce greenhouse gases on a lifecycle basis:
 - Up to B20 biodiesel (FAME) **
 - Up to 100% HVO and GTL renewable fuels
- * Refer to guidelines for successful application. Please consult your Cat dealer or "Caterpillar Machine Fluids Recommendations" (SEBU6250) for details.
- ** Engines with aftertreatment devices can use up to B20. Engines with no aftertreatment devices can use higher blends, up to B100.

WEIGHTS AND OPERATING SPECIFICATIONS		
Operating Weight	21 781 kg	48,018 lb
Static Tipping Load – Full 37° Turn		
With Tire Deflection	13 640 kg	30,072 lb
No Tire Deflection	14 642 kg	32,233 lb
Breakout Force	164 kN	36,974 lbf

- For 4.0 m³ (5.2 yd³) general purpose bucket with BOCE.
- Full compliance to ISO 14397-1:2007 Sections 1 thru 6, which requires 2% verification between calculations and testing.

SOUND		
With Cooling Fan Speed at Maximum Value:		
Operator Sound Pressure Level (ISO 6396:2008)	75 dB(A)	
Exterior Sound Power Level (ISO 6395:2008)	110 dB(A)	
Exterior Sound Pressure Level (SAE J88:2013)	78 dB(A)*	
* Distance of 15 m (49.2 ft), moving forward in second gear ratio.		
With Cooling Fan Speed at 70% of Maximum Value:**		
Operator Sound Pressure Level (ISO 6396:2008)	73 dB(A)	
Exterior Sound Power Level	108 dB(A)***	

- ** For machines in European Union countries and in countries that adopt the "EU Directives."
- *** European Union Directive "2000/14/EC" as amended by "2005/88/EC."

TRANSMISSION					
Forward 1	6.4 km/h	4.0 mph	Reverse 1	7.0 km/h	4.3 mph
Forward 2	12.1 km/h	7.5 mph	Reverse 2	13.2 km/h	8.2 mph
Forward 3	21.0 km/h	13.0 mph	Reverse 3	23.0 km/h	14.3 mph
Forward 4	34.8 km/h	21.6 mph	Reverse 4	36.9 km/h	22.9 mph

- Maximum travel speed in standard vehicle with empty bucket and standard L3 tires with 826 mm (32 in) roll radius.

SERVICE REFILL CAPACITIES		
Fuel Tank	320 L	84.5 gal
DEF Tank	26 L	6.9 gal
Cooling System	53 L	14.0 gal
Crankcase	23 L	6.1 gal
Transmission	23 L	6.1 gal
Differentials and Final Drives – Front	57 L	15.1 gal
Differentials and Final Drives – Rear	57 L	15.1 gal
Hydraulic Tank	101 L	26.7 gal

HYDRAULIC SYSTEM		
Implement Pump Type	Variable Displacement Piston, Load Sensing	
Implement System		
Maximum Flow @ 2,275 rpm	327 L/min	86 gal/min
Maximum Operating Pressure	27 900 kPa	4,047 psi
Maximum Flow 3rd Function	240 L/min	63 gal/min
Maximum Operating Pressure 3rd Function	22 780 kPa	3,304 psi
Hydraulic Cycle Time		
Raise from Carry Position	5.7 seconds	
Dump at Maximum Raise	1.8 seconds	
Lower, Empty, Float Down	2.6 seconds	
Total Cycle Time	10.1 seconds	

CAB	
ROPS/FOPS	ROPS/FOPS meet ISO 3471:2008 and ISO 3449:2005 Level II standards

BRAKES	
Brakes	Brakes meet ISO 3450:2011 standards

DIMENSIONS		
Height to Top of Hood	2804 mm	9'3"
Height to Top of Exhaust Pipe	3539 mm	11'8"
Height to Top of ROPS	3582 mm	11'10"
Ground Clearance	455 mm	1'5"
B-Pin Height	4256 mm	13'11"
Center Line of Rear Axle to Edge of Counterweight	2453 mm	8'1"
Wheelbase	3550 mm	11'8"
Center Line of Rear Axle to Hitch	1775 mm	5'10"
Rack Back @ Maximum Lift	62 degrees	
Rack Back @ Carry	50 degrees	
Rack Back @ Ground	42 degrees	
Lift Arm Clearance	3705 mm	12'1"

STANDARD & OPTIONAL EQUIPMENT

Standard and optional equipment may vary. Consult your Cat dealer for details.

OPERATOR ENVIRONMENT	STANDARD	OPTIONAL
Air conditioning (HVAC) with 10 vents and filter unit located outside of cab	●	
Bucket/work tool function lockout	●	
Switch, transmission neutralizer lockout	●	
Cab, pressurized and sound suppressed	●	
Camera, rearview	●	
Cat® Payload (kit)		●
Coat hook	●	
Computerized monitoring system	●	
Cup holders and personal tray on right console and behind seat	●	
Horn	●	
Mirrors, rearview external with integrated spot mirror	●	
Pilot hydraulic controls, lift and tilt function; two (2) single axis levers or joystick	●	
12V power port (10A)	●	
Radio ready	●	
Radio		●
ROPS/FOPS structure	●	
Seat, Cat Comfort (cloth), mechanical suspension	●	
Seat, air suspended		●
Steering column, adjustable angle	●	
Window, sliding (left and right sides)	●	
Wipers/washers (front and rear)	●	
POWER TRAIN	STANDARD	OPTIONAL
Axles, Open/Open differentials	●	
Axles, limited slip differential(s)		●
Axles, oil cooler		●
Brakes, full hydraulic enclosed wet-disc	●	
Cat C9.3B engine	●	
Engine Idle Management System (EIMS)	●	
Auto Idle Shutdown (AIS)	●	
Fan, radiator, electronically controlled, hydraulically driven, temperature sensing, on demand	●	
Fan, reversing automatic and manual control		●
Filter, fuel primary/secondary/tertiary	●	
Filters, engine air, primary/secondary	●	
Fuel priming pump (electric)	●	
Fuel/water separator	●	
Radiator, unit core (9.5 fpi) with ATAAC	●	
Torque converter	●	
Transmission, powershift (4F/4R), automatic (2-4) with kick-down function, overspeed protection	●	
LINKAGE	STANDARD	OPTIONAL
Fusion™ quick coupler control with dual kick outs		●
Lift and bucket return-to-dig kickouts (electro-magnetic), mechanical adjustment	●	
Z-bar, cast tilt lever	●	

HYDRAULICS	STANDARD	OPTIONAL
Dedicated brake and fan pump	●	
Dedicated load sensing steering pump	●	
Load sensing implement system pilot operated	●	
Quick coupler control		●
Ride control		●
S O-S SM oil sampling valves	●	
3 rd function with additional dedicated single axis lever		●
ELECTRICAL	STANDARD	OPTIONAL
Alarm, back-up variable/main disconnect switch	●	
Alternator (145-amp, brush type)	●	
Batteries, maintenance free (2x1,125 CCA)	●	
Ignition key; start/stop	●	
Lighting system: 4 halogen work lights, cab mounted	●	
Lighting system: 8 halogen work lights, cab mounted		●
Lighting system: 4 LED work lights, cab mounted		●
Lighting system: 8 LED work lights, cab mounted		●
Lights: warning beacon		●
Roading lights with high/low beam and F and R turn signals	●	
Starter, electric (heavy duty)	●	
Starting and charging system, 24V	●	
ADDITIONAL EQUIPMENT	STANDARD	OPTIONAL
Autolube system		●
Camera, front view (kit)**		●
Cold weather starting basic (ether starting aid)	●	
Cold weather starting full (HD batteries 2x1,400 CCA, ether system, jacket water heater, cold weather fluids)		●
Counterweight, 605 kg (1,334 lb)	●	
Fenders (front) steel	●	
Fender rear extensions or roading		●
Grill, airborne debris	●	
Hitch, drawbar with pin	●	
Hood, metallic on steel structure	●	
Doors, service access (locking)	●	
L3 radial or bias ply tires	●	
L5 traction tires		●
Power train guard		●
Precleaner, strata tubes	●	
Precleaner, strata tubes with screen		●
Product Link™ ready	●	
Reverse Stobe (kit)***		●
Roading Certification****		●
Secondary steering system, electrical*		●
Toolbox		●
Window cleaning (kit)		●
Windshield guard		●

*Standard where mandated.

**Refer to M0106413 publication for usage requirements.

***Not compatible with roading arrangements.

****Offering depends on region.



オフロード法2014年
基準適合

For more complete information on Cat products, dealer services and industry solutions, visit us on the web at www.cat.com

Materials and specifications are subject to change without notice. Featured machines in photos may include additional equipment. See your Cat dealer for available options.

© 2022 Caterpillar. All Rights Reserved. CAT, CATERPILLAR, LET'S DO THE WORK, their respective logos, Fusion, S•O•S, Product Link, "Caterpillar Corporate Yellow", the "Power Edge" and Cat "Modern Hex" trade dress as well as corporate and product identity used herein, are trademarks of Caterpillar and may not be used without permission.

www.cat.com www.caterpillar.com

AEXQ3411-00
Build Number: 01A
(N Am, Europe, S Korea,
China, Japan)

