



988K XE

Wheel Loader

Technical Specifications

Configurations and features may vary by region. Please consult your Cat® dealer for availability in your area.

Table of Contents

Specifications	2
Engine	2
Transmission	2
Operating Specifications	2
Hydraulic System – Lift/Tilt	2
Hydraulic Cycle Time	2
Hydraulic System – Steering	3
Air Conditioning System	3
Axles	3
Brakes	3
Operator Cab	3
Service Refill Capacities	3
Sound Performance – Tier 4 Final/Stage V	3
Dimensions	4
Bucket Capacity/Material Density Selection Guide	5
Aggregate Package Operating Specifications – Standard Lift	6
Aggregate Package Operating Specifications – High Lift	7
Operating Specifications – Standard Lift	8
Operating Specifications – High Lift	9
Standard and Optional Equipment	10

988K XE Wheel Loader Specifications

Engine

Engine Model	Cat C18	
Rated Speed	1,700 rpm	
Peak Power Speed	1,500 rpm	
Gross – ISO 14396	432 kW	580 hp
Gross – SAE J1995	439 kW	588 hp
Net Power – SAE J1349	401 kW	538 hp
Bore	145 mm	5.7 in
Stroke	183 mm	7.2 in
Displacement	18.1 L	1,105 in ³
Peak Torque (1200 rpm) – SAE J1995	2852 N·m	2,104 lbf-ft
Torque Rise	58%	

- Meets U.S. EPA Tier 4 Final and EU Stage V emission standards.

Transmission

Transmission Type	Cat switched reluctance electric drive	
Forward 1 (virtual)	7.0 km/h	4.3 mph
Forward 2 (virtual)	11.3 km/h	7.0 mph
Forward 3 (virtual)	22.2 km/h	13.8 mph
Forward 4 (virtual)	32.1 km/h	20.0 mph
Reverse 1 (virtual)	7.0 km/h	4.3 mph
Reverse 2 (virtual)	11.3 km/h	7.0 mph
Reverse 3 (virtual)	28.2 km/h	17.5 mph

Operating Specifications

Operating Weight	52 781 kg	116,362 lb
Rated Payload – Quarry Face	11.3 tonnes	12.5 tons
Rated Payload – Loose Material	14.5 tonnes	16.0 tons
Bucket Capacity Range	4.7-13.0 m ³	6.2-17.0 yd ³

Hydraulic System Lift/Tilt

Lift/Tilt System – Circuit	EH-Positive Flow Control, Flow Sharing	
Lift/Tilt System Pumps	Variable displacement piston	
Maximum Flow at 1,400-1,600 rpm	580 L/min	153 gal/min
Relief Valve Setting – Lift/Tilt	32 800 kpa	4,757 psi
Lift Cylinder – Bore	210 mm	8.7 in
Lift Cylinder – Stroke	1050 mm	41.3 in
Tilt Cylinder – Bore	266 mm	8.7 in
Tilt Cylinder – Stroke	685 mm	27.0 in

Hydraulic Cycle Time

Rackback	4.5 Seconds
Raise	8.0 Seconds
Dump	2.2 Seconds
Lower Float Down	3.5 Seconds
Total Hydraulic Cycle Time	18.2 Seconds

988K XE Wheel Loader Specifications

Hydraulic System – Steering

Steering System – Circuit	Pilot, load sensing	
Steering System – Pump	Variable displacement piston	
Maximum Flow @ × 1,400-1,600 rpm	270 L/min	71.3 gal/min
Steering Cut Off Pressure	30,000 kPa	4,351 psi
Total Steering Angle	86°	
Steering Cycle Time (high idle)	3.4 Seconds	
Steering Cycle Time (low idle)	5.6 Seconds	
Steering	ISO 5010:2007	

Air Conditioning System

The air conditioning system on this machine contains the fluorinated greenhouse gas refrigerant R134a (Global Warming Potential = 1430). The system contains 1.8 kg of refrigerant which has a CO₂ equivalent of 2.574 metric tonnes.

Axles

Front	Fixed
Rear	Trunnion
Oscillation Angle	13°

Brakes

Brakes	ISO 3450:2011
--------	---------------

Operator Cab

ROPS/FOPS	ROPS/FOPS meet ISO 3471:2008 and ISO 3449:2005 Level II standards
-----------	---

Service Refill Capacities

Fuel Tank	555 L	147.0 gal
Cooling System (jacket water)	112 L	30.0 gal
Cooling Systems (power train)	30 L	8.0 gal
Engine Crankcase	60 L	16.0 gal
Diesel Exhaust Fluid Tank	33 L	8.7 gal
Transmission	60 L	16.0 gal
Differentials and Final Drives – front	186 L	49.0 gal
Differentials and Final Drives – rear	186 L	49.0 gal
Hydraulic System – implement/steering	475 L	126.0 gal

- All nonroad Tier 4 Final/Stage V diesel engines are required to use:
 - The machine has the flexibility to run on either ultra-low-sulfur diesel fuel (ULSD with 15 ppm of sulfur or less) or up to B20 biodiesel when feedstock meeting ASTM D7467 specifications is blended with ULSD.
 - Cat DEO-ULS™ or oils that meet the Cat ECF-3, API CJ-4, and ACEA E9 specifications are required.
 - Only use DEF that meets ISO 22241-1 standards.

Sound Performance – Tier 4 Final/Stage V

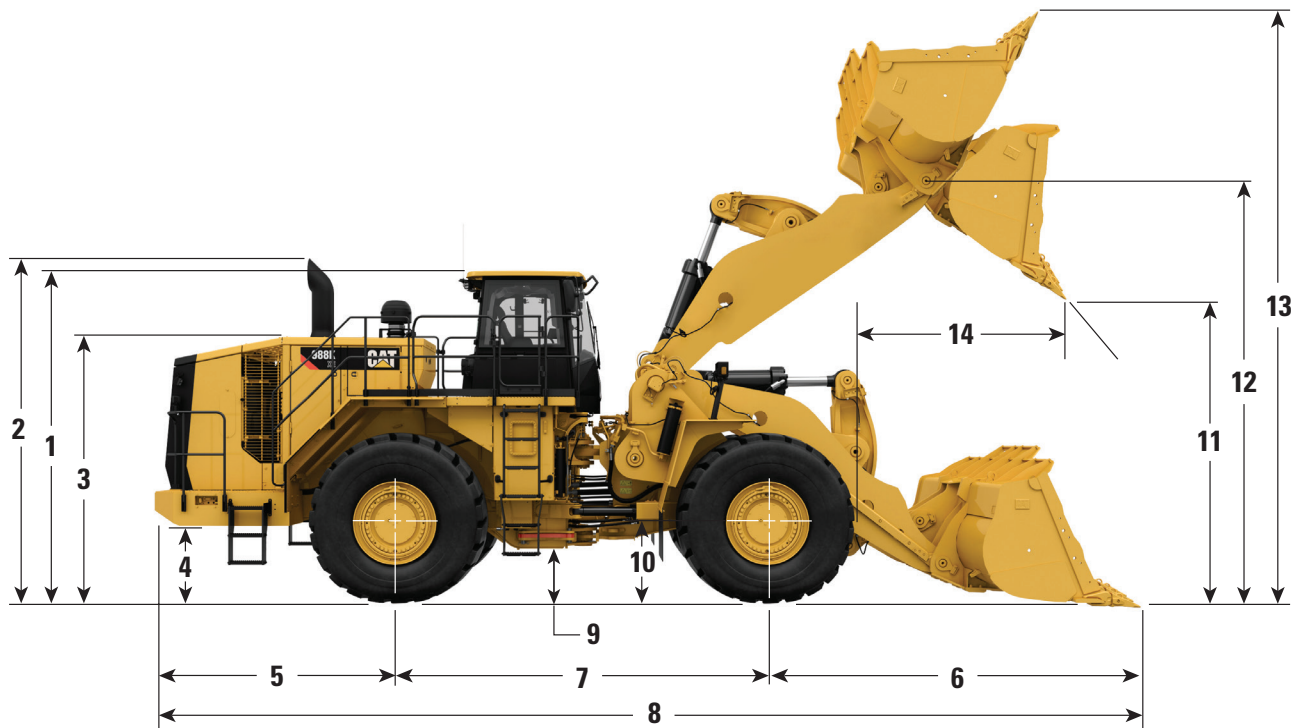
Operator Sound Level (ISO 6396:2008)	72 dB(A)
Machine Sound Level (ISO 6395:2008)	109 dB(A)

- The operator sound pressure level was measured according to the test procedures and conditions specified in ISO 6396:2008. The measurement was conducted at 70 percent of the maximum engine cooling fan speed.
- Hearing protection may be needed when the machine is operated with a cab that is not properly maintained or when the doors or windows are open for extended periods or in a noisy environment.
- The machine sound power level was measured according to the test procedures and conditions specified in ISO 6395:2008. The measurement was conducted at 70 percent of the maximum engine cooling fan speed.

988K XE Wheel Loader Specifications

Dimensions

All dimensions are approximate.



	Standard Lift		High Lift	
1 Ground to Top of ROPS	4202 mm	13.8 ft	4202 mm	13.8 ft
2 Ground to Top of Exhaust Stacks	4521 mm	14.8 ft	4521 mm	14.8 ft
3 Ground to Top of Hood	3334 mm	10.9 ft	3334 mm	10.9 ft
4 Ground to Bumper Clearance	933 mm	3.1 ft	933 mm	3.1 ft
5 Rear Axle Center Line to Bumper	3187 mm	10.5 ft	3187 mm	10.5 ft
6 Front Axle Center Line to Bucket Tip	4254 mm	14.0 ft	4661 mm	15.3 ft
7 Wheel Base	4550 mm	14.9 ft	4550 mm	14.9 ft
8 Maximum Overall Length	11 991 mm	39.3 ft	12 398 mm	40.7 ft
9 Ground to Lower Hitch Clearance	568 mm	1.9 ft	568 mm	1.9 ft
10 Ground to Center of Axles	978 mm	3.2 ft	978 mm	3.2 ft
11 Clearance at Maximum Lift (45° Dump)	3641 mm	11.9 ft	4043 mm	13.3 ft
12 B-Pin Height at Maximum Lift	5485 mm	18.0 ft	5887 mm	19.3 ft
13 Maximum Overall Height – Bucket Raised	7455 mm	24.5 ft	7849 mm	25.8 ft
14 Reach at Maximum Lift (45° Dump)	1981 mm	6.5 ft	2062 mm	6.8 ft

Note: Specifications are calculated with 6.9 m³ (9.0 yd³) rock bucket and Michelin XLDD2 with 978 mm (3.2 ft) centerline of rear axle height.

Bucket Capacity/Material Density Selection Guide

Standard Lift/High Lift

Rated Payload (Quarry Face) – 11.3 tonnes/12.5 tons

Material Density				Bucket Volume	
kg/m ³	lb/yd ³	tonnes/m ³	tons/yd ³	m ³	yd ³
1468-1614	2,500-2,750	1.47-1.61	1.25-1.38	7.6	10.00
1638-1801	2,778-3,056	1.64-1.80	1.39-1.53	6.9	9.00
1766-1942	3,001-3,300	1.77-1.94	1.50-1.65	6.4	8.33

Standard Lift/High Lift

Rated Payload (Loose Material) – 14.5 tonnes/16 tons

Material Density				Bucket Volume	
kg/m ³	lb/yd ³	tonnes/m ³	tons/yd ³	m ³	yd ³
1510-1667	2,560-2,816	1.51-1.67	1.28-1.41	9.6	12.5
1726-1905	2,909-3,200	1.73-1.90	1.45-1.60	8.4	11.0
1908-2105	3,200-3,520	1.91-2.11	1.60-1.76	7.6	10.0

Note: Rated Payload is the material weight in the bucket that the loader is designed to carry, excluding the weight of the bucket, GET, and wear material. Rated Payloads are published at 100 percent, even though Caterpillar does allow 110 percent. These values are given in terms of mass. There is no consideration to loose density weights of various materials since they are so diverse. Refer to the Large Wheel Loader Payload Policy.

988K XE Wheel Loader Specifications

Aggregate Package Operating Specifications – Standard Lift

988K XE Std Lift Agg Pkg Tires: 35/65 R33 XLDD2,
PN: 399-4568 SLR: 978

Bucket Type		General Purpose			
Ground Engaging Tool		Segments			
Cutting Edge Type		Straight			
Bucket Part Number		472-0120	435-4029	347-4990	347-4980
Struck Capacity	m ³	8.0	7.0	6.0	5.5
	yd ³	10.5	9.2	7.8	7.2
Heaped Capacity (Rated)	m ³	9.6	8.4	7.6	6.9
	yd ³	12.5	11.0	10.0	9.0
Bucket Width	mm	3897	3897	3897	3897
	ft	12.8	12.8	12.8	12.8
Dump Clearance at Full Lift and 45° Discharge (Bare)	mm	3642	3741	3818	3902
	ft	11.9	12.3	12.5	12.8
Reach at Lift and 45° Discharge (Bare)	mm	1898	1787	1722	1645
	ft	6.2	5.9	5.7	5.4
Reach with Lift Arms Horizontal and Bucket Level (Teeth)	mm	3917	3768	3668	3554
	ft	12.9	12.4	12.0	11.7
Digging Depth (Segment)	mm	200	208	200	195
	in	7.9	8.2	7.9	7.7
Overall Length (Bucket Level Ground)	mm	11 965	11 822	11 716	11 598
	ft	39.3	38.8	38.4	38.1
Overall Height with Bucket at Full Raise	mm	7830	7688	7591	7487
	ft	25.7	25.2	24.9	24.6
Loader Clearance Turning Circle (SAE Carry with Teeth)	mm	17 406	17 325	17 261	17 192
	ft	57.1	56.8	56.6	56.4
Full Dump Angle	degrees	50	50	50	50
Static Tipping Load Straight (Rigid Tire)*	kg	41 081	41 549	41 949	42 351
	lb	90,567	91,600	92,481	93,367
Static Tipping Load Straight (ISO) (Tire Squash)*	kg	38 427	38 947	39 358	39 783
	lb	84,718	85,863	86,769	87,707
Static Tipping Load – Full Turn (Articulated 35°) (Rigid Tire)*	kg	36 700	37 152	37 543	37 931
	lb	80,909	81,906	82,768	83,624
Static Tipping Load – Full Turn (Articulated 35°) (ISO) (Tire Squash)*	kg	32 635	33 158	33 565	33 987
	lb	71,948	73,100	73,998	74,928
Static Tipping Load – Full Turn (Articulated 43°) (Rigid Tire)*	kg	34 573	35 017	35 404	35 786
	lb	76,220	77,200	78,053	78,894
Static Tipping Load – Full Turn (Articulated 43°) (ISO) (Tire Squash)*	kg	30 105	30 624	31 026	31 441
	lb	66,370	67,514	68,401	69,316
Breakout Force**	kN	381	413	437	468
	lb	85,649	92,746	98,315	105,297
Operating Weight	kg	55 533	55 257	54 969	54 729
	lb	122,428	121,822	121,186	120,656
Weight Distribution at SAE Carry (Unloaded)					
Front	kg	28 451	27 973	27 481	27 064
	lb	62,724	61,671	60,585	59,665
Rear	kg	27 081	27 284	27 488	27 665
	lb	59,704	60,151	60,602	60,992
Weight Distribution at SAE Carry (Loaded)					
Front	kg	51 999	51 403	50 859	50 361
	lb	114,639	113,325	112,125	111,026
Rear	kg	18 048	18 369	18 625	18 883
	lb	39,790	40,497	41,062	41,631

*Static tipping loads and operating weights include full fluids and 80 kg (176 lb) operator.

**Breakout force is measured 102 mm (4 in) behind tip of cutting edge with bucket hinge pin as pivot in accordance with SAE J732C. Full compliance to ISO 14397-1:2007.

988K XE Wheel Loader Specifications

Aggregate Package Operating Specifications – High Lift

988K XE High Lift Agg Pkg Tires: 35/65 R33 XLDD2,
PN: 399-4568 SLR: 978

Bucket Type		General Purpose			
Ground Engaging Tool		Segments			
Cutting Edge Type		Straight			
Bucket Part Number		472-0120	435-4029	347-4990	347-4980
Struck Capacity	m ³	8.0	7.0	6.0	5.5
	yd ³	10.5	9.2	7.8	7.2
Heaped Capacity (Rated)	m ³	9.6	8.4	7.6	6.9
	yd ³	12.5	11.0	10.0	9.0
Bucket Width	mm	3897	3897	3897	3897
	ft	12.8	12.8	12.8	12.8
Dump Clearance at Full Lift and 45° Discharge (Bare)	mm	4035	4135	4211	4296
	ft	13.2	13.6	13.8	14.1
Reach at Lift and 45° Discharge (Bare)	mm	1987	1876	1811	1734
	ft	6.5	6.2	5.9	5.7
Reach with Lift Arms Horizontal and Bucket Level (Teeth)	mm	4256	4107	4007	3893
	ft	14.0	13.5	13.1	12.8
Digging Depth (Segment)	mm	219	227	219	214
	in	8.6	8.9	8.6	8.4
Overall Length (Bucket Level Ground)	mm	12 371	12 227	12 122	12 005
	ft	40.6	40.1	39.8	39.4
Overall Height with Bucket at Full Raise	mm	8224	8082	7985	7881
	ft	27.0	26.5	26.2	25.9
Loader Clearance Turning Circle (SAE Carry with Teeth)	mm	17 741	17 660	17 595	17 525
	ft	58.2	57.9	57.7	57.5
Full Dump Angle	degrees	50	50	50	50
Static Tipping Load Straight (Rigid Tire)*	kg	41 325	41 734	42 110	42 474
	lb	91,106	92,008	92,837	93,638
Static Tipping Load Straight (ISO) (Tire Squash)*	kg	32 825	39 289	39 678	40 068
	lb	85,594	86,616	87,475	88,334
Static Tipping Load – Full Turn (Articulated 35°) (Rigid Tire)*	kg	36 750	37 149	37 518	37 871
	lb	81,020	81,899	82,713	83,491
Static Tipping Load – Full Turn (Articulated 35°) (ISO) (Tire Squash)*	kg	32 691	33 166	33 554	33 944
	lb	72,072	73,118	73,973	74,833
Static Tipping Load – Full Turn (Articulated 43°) (Rigid Tire)*	kg	34 529	34 923	35 289	35 636
	lb	76,124	76,991	77,798	78,565
Static Tipping Load – Full Turn (Articulated 43°) (ISO) (Tire Squash)*	kg	30 027	30 502	30 888	31 276
	lb	66,198	67,245	68,096	68,951
Breakout Force**	kN	350	380	403	431
	lb	78,782	85,375	90,534	97,000
Operating Weight	kg	58 463	58 187	57 899	57 659
	lb	128,888	128,281	127,646	127,116
Weight Distribution at SAE Carry (Unloaded)					
Front	kg	28 499	28 001	27 486	27 051
	lb	62,830	61,731	60,597	59,638
Rear	kg	29 963	30 187	30 413	30 608
	lb	66,058	66,551	67,049	67,478
Weight Distribution at SAE Carry (Loaded)					
Front	kg	53 223	52 622	52 063	51 558
	lb	117,335	116,013	114,779	113,665
Rear	kg	19 755	20 080	20 351	20 616
	lb	43,552	44,269	44,867	45,451

*Static tipping loads and operating weights include full fluids and 80 kg (176 lb) operator.

**Breakout force is measured 102 mm (4 in) behind tip of cutting edge with bucket hinge pin as pivot in accordance with SAE J732C. Full compliance to ISO 14397-1:2007.

988K XE Wheel Loader Specifications

Operating Specifications – Standard Lift

		988K XE Std Lift Tires: 35/65 R33 XLDD2, PN: 399-4568 SLR: 978					
Bucket Type		General Purpose		Rock		HD Rock	
Ground Engaging Tool		Adapters or BOCE		X130	X130	X130	X130
Cutting Edge Type		Straight	Straight	Spade	Spade	Spade	Spade
Bucket Part Number		347-4990	347-4980	498-9992	498-9990	498-9988	498-9994
Struck Capacity	m ³	6.0	5.5	6.5	5.5	5.0	5.0
	yd ³	7.8	7.2	8.5	7.2	6.5	6.5
Heaped Capacity (Rated)	m ³	7.6	6.9	7.6	6.9	6.4	6.4
	yd ³	10.0	9.0	10.0	9.0	8.3	8.3
Bucket Width	mm	3897	3897	4020	4020	4020	4080
	ft	12.8	12.8	13.2	13.2	13.2	13.4
Dump Clearance at Full Lift and 45° Discharge (Bare)	mm	3818	3902	3603	3681	3736	3722
	ft	12.5	12.8	11.8	12.1	12.3	12.2
Dump Clearance at Full Lift and 45° Discharge (with Teeth)	mm	—	—	3414	3492	3547	3520
	ft	—	—	11.2	11.5	11.6	11.5
Reach at Lift and 45° Discharge (Bare)	mm	1722	1645	1936	1858	1803	1816
	ft	5.7	5.4	6.4	6.1	5.9	6.0
Reach at Lift and 45° Discharge (with Teeth)	mm	—	—	2117	2040	1984	1989
	ft	—	—	6.9	6.7	6.5	6.5
Reach with Lift Arms Horizontal and Bucket Level (Teeth)	mm	3668	3554	4233	4123	4045	4067
	ft	12.0	11.7	13.9	13.5	13.3	13.3
Digging Depth (Segment)	mm	200	195	201	201	201	201
	in	7.9	7.7	7.9	7.9	7.9	7.9
Overall Length (Bucket Level Ground)	mm	11 716	11 598	12 281	12 171	12 093	12 115
	ft	38.4	38.1	40.3	39.9	39.7	39.7
Overall Height with Bucket at Full Raise	mm	7591	7488	7557	7455	7381	7384
	ft	24.9	24.6	24.8	24.5	24.2	24.2
Loader Clearance Turning Circle (SAE Carry with Teeth)	mm	17 261	17 192	17 429	17 366	17 321	17 344
	ft	56.6	56.4	57.2	57.0	56.8	56.9
Full Dump Angle	degrees	49.8	49.8	49.8	49.8	49.8	50
Static Tipping Load Straight (Rigid Tire)*	kg	36 029	36 412	35 067	35 604	35 651	34 592
	lb	79,430	80,276	77,309	78,494	78,597	76,262
Static Tipping Load Straight (ISO) (Tire Squash)*	kg	33 859	34 261	32 922	33 477	33 543	32 494
	lb	74,646	75,533	72,580	73,804	73,949	71,636
Static Tipping Load – Full Turn (Articulated 35°) (Rigid Tire)*	kg	32 325	32 697	31 377	31 906	31 946	30 888
	lb	71,263	72,084	69,175	70,340	70,430	68,097
Static Tipping Load – Full Turn (Articulated 35°) (ISO) (Tire Squash)*	kg	29 081	29 478	28 164	28 716	28 783	27 738
	lb	64,112	64,989	62,090	63,309	63,455	61,152
Static Tipping Load – Full Turn (Articulated 43°) (Rigid Tire)*	kg	30 526	30 893	29 586	30 110	30 148	29 090
	lb	67,299	68,108	65,225	66,381	66,465	64,133
Static Tipping Load – Full Turn (Articulated 43°) (ISO) (Tire Squash)*	kg	26 961	27 355	26 053	26 603	26 668	25 626
	lb	59,439	60,308	57,437	58,650	58,793	56,495
Breakout Force**	kN	437	468	371	394	410	402
	lb	98,315	105,297	83,329	88,591	92,170	90,383
Operating Weight	kg	52 334	52 094	52 902	52 559	52 531	53 510
	lb	115,377	114,847	116,628	115,872	115,810	117,969
Weight Distribution at SAE Carry (Unloaded)							
Front	kg	28 687	28 270	29 779	29 144	29 118	30 717
	lb	63,245	62,325	65,652	64,252	64,194	67,719
Rear	kg	23 647	23 824	23 122	23 414	23 413	22 793
	lb	52,132	52,523	50,976	51,619	51,616	50,250
Weight Distribution at SAE Carry (Loaded)							
Front	kg	46 947	46 467	48 073	47 382	47 317	48 922
	lb	103,501	102,441	105,984	104,460	104,317	107,854
Rear	kg	16 727	16 967	16 168	16 516	16 553	15 928
	lb	36,877	37,406	35,645	36,412	36,493	35,115

*Static tipping loads and operating weights include full fluids and 80 kg (176 lb) operator.

**Breakout force is measured 102 mm (4 in) behind tip of cutting edge with bucket hinge pin as pivot in accordance with SAE J732C. Full compliance to ISO 14397-1:2007.

988K XE Wheel Loader Specifications

Operating Specifications – High Lift

		988K XE High Lift Tires: 35/65 R33 XLDD2, PN: 399-4568 SLR: 978					
Bucket Type		General Purpose		Rock		HD Rock	
Ground Engaging Tool		Adapters or BOCE		X130	X130	X130	X130
Cutting Edge Type		Straight	Straight	Spade	Spade	Spade	Spade
Bucket Part Number		347-4990	347-4980	498-9992	498-9990	498-9988	498-9994
Struck Capacity	m ³	6.0	5.5	6.5	5.5	5.0	5.0
	yd ³	7.8	7.2	8.5	7.2	6.5	6.5
Heaped Capacity (Rated)	m ³	7.6	6.9	7.6	6.9	6.4	6.4
	yd ³	10.0	9.0	10.0	9.0	8.3	8.3
Bucket Width	mm	3897	3897	4020	4020	4020	4080
	ft	12.8	12.8	13.2	13.2	13.2	13.4
Dump Clearance at Full Lift and 45° Discharge (Bare)	mm	4211	4296	3997	4074	4130	4116
	ft	13.8	14.1	13.1	13.4	13.5	13.5
Dump Clearance at Full Lift and 45° Discharge (with Teeth)	mm	—	—	3808	3885	3940	3914
	ft	—	—	12.5	12.7	12.9	12.8
Reach at Lift and 45° Discharge (Bare)	mm	1811	1734	2024	1947	1892	1905
	ft	5.9	5.7	6.6	6.4	6.2	6.2
Reach at Lift and 45° Discharge (with Teeth)	mm	—	—	2206	2128	2073	2077
	ft	—	—	7.2	7.0	6.8	6.8
Reach with Lift Arms Horizontal and Bucket Level (Teeth)	mm	4007	3893	4572	4462	4384	4406
	ft	13.1	12.8	15.0	14.6	14.4	14.5
Digging Depth (Segment)	mm	219	214	220	220	220	220
	in	8.6	8.4	8.7	8.7	8.7	8.7
Overall Length (Bucket Level Ground)	mm	12 122	12 005	12 688	12 578	12 500	12 521
	ft	39.8	39.4	41.6	41.3	41.0	41.1
Overall Height with Bucket at Full Raise	mm	7985	7881	7951	7849	7775	7778
	ft	26.2	25.9	26.1	25.7	25.5	25.5
Loader Clearance Turning Circle (SAE Carry with Teeth)	mm	17 595	17 525	17 763	17 699	17 654	17 678
	ft	57.7	57.5	58.3	58.1	57.9	58.0
Full Dump Angle	degrees	50	50	50	50	50	50
Static Tipping Load Straight (Rigid Tire)*	kg	33 846	34 190	32 933	33 427	33 456	32 402
	lb	74,617	75,377	72,605	73,695	73,757	71,434
Static Tipping Load Straight (ISO) (Tire Squash)*	kg	31 957	32 321	31 063	31 576	31 622	30 577
	lb	70,453	71,256	68,482	69,613	69,715	67,411
Static Tipping Load – Full Turn (Articulated 35°) (Rigid Tire)*	kg	30 229	30 566	29 329	29 818	29 842	28 790
	lb	66,644	67,386	64,660	65,737	65,790	63,470
Static Tipping Load – Full Turn (Articulated 35°) (ISO) (Tire Squash)*	kg	27 271	27 634	26 393	26 908	26 958	25 918
	lb	60,121	60,923	58,187	59,323	59,432	57,139
Static Tipping Load – Full Turn (Articulated 43°) (Rigid Tire)*	kg	28 474	28 806	27 580	28 065	28 088	27 036
	lb	62,774	63,507	60,803	61,873	61,923	59,604
Static Tipping Load – Full Turn (Articulated 43°) (ISO) (Tire Squash)*	kg	25 199	25 559	24 330	24 842	24 891	23 852
	lb	55,554	56,347	53,639	54,768	54,874	52,584
Breakout Force**	kN	403	431	341	363	377	370
	lb	90,534	97,000	76,633	81,539	84,840	83,123
Operating Weight	kg	53 806	53 566	54 374	54 031	54 003	54 982
	lb	118,622	118,092	119,873	119,117	119,055	121,214
Weight Distribution at SAE Carry (Unloaded)							
Front	kg	29 321	28 886	30 458	29 797	29 770	31 454
	lb	64,642	63,683	67,148	65,691	65,631	69,344
Rear	kg	24 485	24 680	23 916	24 234	24 233	23 528
	lb	53,980	54,410	52,725	53,426	53,424	51,870
Weight Distribution at SAE Carry (Loaded)							
Front	kg	48 518	48 028	49 689	48 979	48 919	50 609
	lb	106,963	105,883	109,545	107,980	107,848	111,575
Rear	kg	16 628	16 878	16 025	16 391	16 423	15 712
	lb	36,659	37,210	35,328	36,137	36,207	34,640

*Static tipping loads and operating weights include full fluids and 80 kg (176 lb) operator.

**Breakout force is measured 102 mm (4 in) behind tip of cutting edge with bucket hinge pin as pivot in accordance with SAE J732C.

Full compliance to ISO 14397-1:2007.

988K XE Wheel Loader Standard and Optional Equipment

Standard and Optional Equipment

Standard and optional equipment may vary. Consult your Cat dealer for details.

	Standard	Optional		Standard	Optional
ELECTRICAL			OPERATOR ENVIRONMENT (CONTINUED)		
Alarm, back-up	✓		Radio, CB ready	✓	
Alternator, single 150 amp	✓		Rimpull Control System (RCS)	✓	
Batteries, dry	✓		Seat, Cat Comfort Series III, heated and ventilated, air suspension, six-way adjustable	✓	
Converter, 10/15 amp, 24V to 12V	✓		Seat belt minder	✓	
Hazardous voltage lamp	✓		Seat belt, retractable, 76 mm (3 in) wide	✓	
Lighting system (halogen, work lights, access and service platform lighting)	✓		STIC™ System	✓	
Starting and charging system, 24V	✓		UV glass	✓	
Starter emergency start receptacle	✓		Virtual gear indicator	✓	
Starter lockout in bumper	✓		Vital Information Management System (VIMS™) with graphical information display: external data port, customizable operator profiles, cycle timer, integrated payload control system	✓	
Transmission lockout in bumper	✓		Wet-arm wipers/washers (front and rear) – intermittent front and rear wipers	✓	
OPERATOR ENVIRONMENT			POWER TRAIN		
Air conditioner	✓		Antifreeze -50° C (-58° F)		✓
Cat Detect, object detection system		✓	Automatic retarding controls	✓	
Cat Vision, rear vision camera system	✓		Brakes, oil-cooled, multi-disc, service/secondary	✓	
Cab precleaner		✓	Case drain screens	✓	
Cab, sound suppressed and pressurized, integrated rollover protective structure (ROPS/FOPS) radio ready for entertainment, includes antenna, speakers and converter (12-volt 5-amp) and power port	✓		Cat Integrated Powered Electronics	✓	
Controls, lift and tilt function	✓		Cat Production Measurement		✓
Graphical information display, displays real time operating information, performs calibrations and customizes operator settings	✓		Cat Production Measurement ready	✓	
Handrail mounted mirrors		✓	Cat SR drive motor	✓	
Heater, defroster	✓		Cat SR generator/pump drive	✓	
Horn, electric	✓		Crankcase guard		✓
Instrumentation, gauges: coolant temperature, engine hour meter, hydraulic oil temperature, power train oil temperature	✓		Electro hydraulic parking brake	✓	
LED warning strobe		✓	Engine block heater 120V or 240V		✓
Light, cab, dome	✓		Engine, C18 MEUI™ diesel, turbocharged/aftercooled	✓	
Lights, directional	✓		Engine oil change system, high speed, Wiggins		✓
Lights, HID or LED		✓	Ground level engine shutoff	✓	
Lunchbox, beverage holders	✓		High ambient cooling – software		✓
Mirrors, heated		✓	Turbine precleaner, engine air intake	✓	
Mirrors, rearview (externally mounted)	✓		Radiator, Aluminum Modular Radiator (AMR)	✓	
Radio, AM/FM/CD/MP3		✓	Starting aid, ether, automatic	✓	
Bluetooth® with Satellite Sirius		✓	Throttle lock, electronic	✓	
			Manual switch and automatic fuel priming	✓	

988K XE Wheel Loader Standard and Optional Equipment

Standard and Optional Equipment

Standard and optional equipment may vary. Consult your Cat dealer for details.

	Standard	Optional		Standard	Optional
OTHER			OTHER (CONTINUED)		
Aggregate handler		✓	Hoses, Cat XT™		✓
Automatic bucket lift kickout/positioner	✓		Hydraulic, steering and brake filtration/ screening system		✓
Base machine price includes a rim allowance	✓		Hydraulically driven demand fan		✓
Cat Clean Emission Module (CEM)	✓		Oil sampling valves		✓
Cold weather starting (extra starter plus two batteries)		✓	Premixed 50% concentration of extended life coolant with freeze protection to -34° C (-29° F)		✓
Couplings, Cat O-ring face seals	✓		Rear access to cab and service platform		✓
Doors, service access (locking)	✓		Steering, load sensing		✓
Ecology drains for engine, radiator, hydraulic tank	✓		Tire Pressure Monitoring System		✓
Fast fill fuel system (Shaw-Aero)		✓	Toe kicks		✓
Front and rear roading fenders		✓	Vandalism protection caplocks		✓
Fuel tank, 555 L (147 gal)	✓		Wheel chocks		✓
Hitch, drawbar with pin	✓				

For more complete information on Cat products, dealer services, and industry solutions, visit us on the web at www.cat.com.

AEXQ2599-00 (8-2019)
(North America, Europe,
and Australia only)

Materials and specifications are subject to change without notice. Featured machines in photos may include additional equipment. See your Cat dealer for available options.

© 2019 Caterpillar. All Rights Reserved. CAT, CATERPILLAR, LET'S DO THE WORK, their respective logos, VIMS, XT, DEO-ULS, STIC, MEUI, "Caterpillar Yellow", the "Power Edge" and Cat "Modern Hex" trade dress as well as corporate and product identity used herein, are trademarks of Caterpillar and may not be used without permission.

