



Cat® D5K2

TRACK-TYPE TRACTOR

FEATURES:

- **Slope Indicate** – New grade control feature provides you slope of blade in cross slope direction and mainfall (fore/aft) direction without having to estimate.
- **Slope Assist** – New optional grade control feature which helps you more easily achieve the desired blade mainfall and cross slope automatically.
- **Stable Blade** – New blade control feature helps you obtain a finish grade with less operator effort.
- **Automatic Traction Control** – New traction control feature automatically reduces track slip without having to lift blade providing improved productivity and reduced undercarriage wear for lower operating costs.
- **Eco Mode** – New engine throttle settings reduce fuel consumption up to 20% to save you more money.
- **Heated and Ventilated Seat** – Experience a new level of comfort in all climates with the new optional heated and ventilated air suspension seat.
- **Power Pitch Blade** – This option lets the operator easily adjust the blade pitch to optimize productivity.
- **Engine** – Cat® C4.4 ACERT™ diesel engine meets U.S. EPA Tier 4 Final/ EU Stage IV/Japan 2014 (Tier 4 Final) emission standards.
- **Heated, Seat-Mounted Controls** – Heated joysticks (optional) offer even greater comfort in cold climates.
- **AccuGrade™** – Optional grade control system enables operators to cut and fill to grade with increased accuracy, minimizing the need for traditional stakes and grade checkers. Large, 177 mm (7"), AccuGrade monitor is built into the machine's dash for easy viewing during operation.
- **Undercarriage** – Choice of undercarriage to give you the lowest costs per hour. Select either the standard sealed and lubricated track (SALT) undercarriage or the innovative SystemOne™ undercarriage.

Specifications

Engine

| | | |
|-----------------------------|----------------|---------------------|
| Engine Model | Cat C4.4 ACERT | |
| Rated Net Power @ 2,200 rpm | | |
| SAE J1349 | 77.6 kW | 104 hp |
| ISO 9249/EEC 80/1269 | 77.6 kW | 104 hp |
| Bore | 105 mm | 4.13 in |
| Stroke | 127 mm | 5 in |
| Displacement | 4.4 L | 269 in ³ |

- Engine meets Tier 4 Final/StageIV/Japan 2014 (Tier 4 Final) emission standards.

Weights

| | | |
|--------------------------------------|---------|-----------|
| Operating Weight – XL | 9214 kg | 20,313 lb |
| Operating Weight – LGP | 9522 kg | 20,992 lb |
| Operating Weight – LGP, 762 mm/30 in | 9726 kg | 21,442 lb |

- Specifications shown are for machine equipped with dozer blade, canopy ROPS, back-up alarm, operator, coolant, lubricants and full fuel tank.

Cab

| | | |
|-------------------|---|--|
| Sound Levels: | | |
| ISO 6396:2008 | 77 dB(A) | |
| SAE J1166 FEB2008 | 78 dB(A) | |
| ROPS | SAE J397-OCT95, SAE J1040-May94, ISO 3471-94, ISO 3164 2008 | |
| FOPS | SAE J231-JAN81, ISO 3449 2005 Level III | |

Transmission

| | | |
|--------------------------------|------------|-----------|
| Drive Pumps | 1 | |
| Track Motors | 2 | |
| Relief Valve Settings | 48 500 kPa | 7,033 psi |
| Maximum Travel Speed – Forward | 9 km/h | 5.6 mph |
| Maximum Travel Speed – Reverse | 10 km/h | 6.2 mph |

Undercarriage

| | | |
|--|------------------------|-----------------------|
| Number of Rollers (each side) | 7 | |
| Number of Shoes (each side) – Sealed and Lubricated Track (SALT) Undercarriage | 40 | |
| Number of Shoes (each side) – SystemOne Undercarriage | 36 | |
| Shoe Width – XL | 510 mm | 20 in |
| Shoe Width – LGP | 660 mm | 26 in |
| Shoe Width – LGP, 762 mm (30 in) | 762 mm | 30 in |
| Length of Track on Ground – XL | 2310 mm | 91 in |
| Length of Track on Ground – LGP | 2310 mm | 91 in |
| Length of Track on Ground – LGP, 762 mm (30 in) | 2310 mm | 91 in |
| Track Gauge – XL | 1600 mm | 63 in |
| Track Gauge – LGP | 1750 mm | 69 in |
| Track Gauge – LGP, 762 mm (30 in) | 1860 mm | 73.2 in |
| Ground Contact Area – XL | 23 562 cm ² | 3,652 in ² |
| Ground Contact Area – LGP | 30 492 cm ² | 4,726 in ² |
| Ground Contact Area – LGP, 762 mm (30 in) | 35 574 cm ² | 5,514 in ² |
| Ground Pressure – XL | 38.6 kPa | 5.6 psi |
| Ground Pressure – LGP | 31.1 kPa | 4.5 psi |
| Ground Pressure – LGP, 762 mm (30 in) | 27.1 kPa | 3.93 psi |



D5K2 Track-Type Tractor

Service Refill Capacities

| | | |
|---------------------------------|--------|----------|
| Fuel Tank | 195 L | 51.5 gal |
| Crankcase and Filter | 11 L | 2.91 gal |
| Final Drives, XL (each side) | 10 L | 2.6 gal |
| Final Drives, LGP (each side) | 10 L | 2.6 gal |
| Cooling System | 22.4 L | 5.92 gal |
| Transmission/Hydraulic Tank | 59.5 L | 15.7 gal |
| Diesel Exhaust Fluid (DEF) Tank | 19 L | 4.9 gal |

Hydraulic Controls

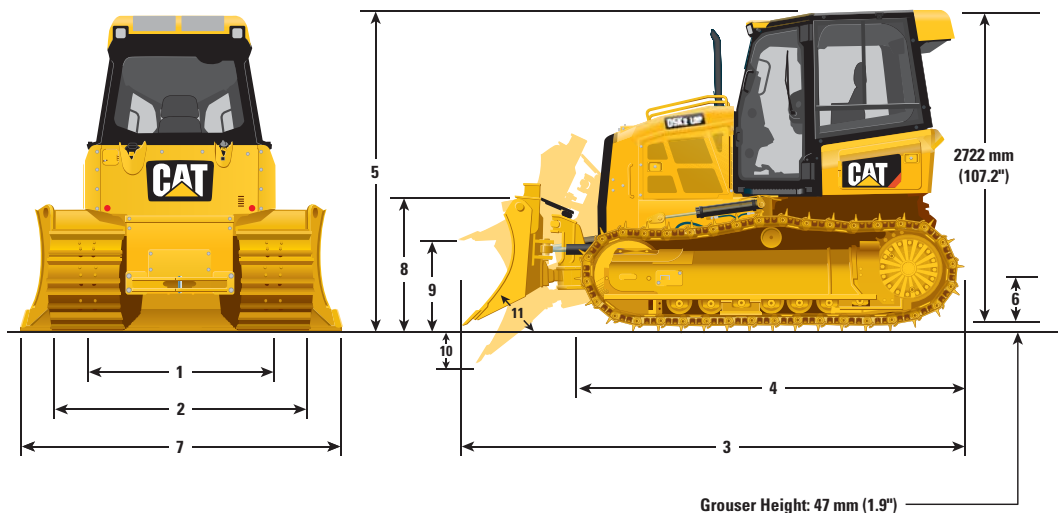
| | | |
|-----------------------|------------|--------------|
| Pump Output | 68.0 L/min | 17.7 gal/min |
| Relief Valve Settings | 20 600 kPa | 2,988 psi |

Ripper

| | | |
|------------------------------------|---------------|----------|
| Type | Parallelogram | |
| Number of Shanks | 3 | |
| Maximum Digging Depth | 337.5 mm | 13.3 in |
| Maximum Reach at Ground Line | 555 mm | 21.9 in |
| Maximum Ground Clearance Under Tip | 448 mm | 17.6 in |
| Overall Width | 1710 mm | 67.3 in |
| Height | 165 mm | 6.5 in |
| Weight | 554 kg | 1,222 lb |

Winch

| | | |
|-----------------------------------|-------------|------------|
| Weight | 610 kg | 1,345 lb |
| Winch Drive | Hydrostatic | |
| Control | Hydraulic | |
| Speed | Variable | |
| Winch Length | 705 mm | 27.76 in |
| Overall Width | 741 mm | 29.2 in |
| Drum Diameter | 254 mm | 10 in |
| Drum Width | 274 mm | 10.8 in |
| Throat Clearance | 171.5 mm | 6.75 in |
| Rope Diameter – recommended | 16 mm | 0.63 in |
| Rope Diameter – optional | 19 mm | 0.75 in |
| Drum Capacity – recommended cable | 113 m | 371 ft |
| Drum Capacity – optional cable | 78 m | 256 ft |
| Maximum Line Pull – bare drum | 18 144 kg | 40,000 lb |
| Maximum Line Pull – full drum | 11 340 kg | 25,000 lb |
| Maximum Line Speed – bare drum | 40 m/min | 131 ft/min |
| Maximum Line Speed – full drum | 63 m/min | 207 ft/min |



Dimensions

| | XL | | LGP | | LGP, 770 mm (30 in) shoes | |
|--|---------------------|----------------------|---------------------|----------------------|---------------------------|----------------------|
| 1 Track Gauge | 1600 mm | 63 in | 1750 mm | 68.9 in | 1860 mm | 73.2 in |
| 2 Width of Tractor (standard shoes, no blade) | 2110 mm | 83.1 in | 2410 mm | 94.9 in | 2630 mm | 103.5 in |
| 3 Overall Length (with blade) | 4309 mm | 170.1 in | 4309 mm | 169.1 in | 4309 mm | 169.1 in |
| 4 Length of Basic Tractor (without blade) | 3265 mm | 128.5 in | 3265 mm | 128.5 in | 3265 mm | 128.5 in |
| 5 Tractor Height | 2769 mm | 109 in | 2769 mm | 109 in | 2769 mm | 109 in |
| 6 Ground Clearance | 332 mm | 13 in | 332 mm | 13 in | 332 mm | 13 in |
| BLADE | XL | | Intermediate | | LGP | |
| 7 Blade Width | 2782 mm | 109.5 in | 2921 mm | 115 in | 3220 mm | 126.7 in |
| 8 Blade Height | 1073 mm | 42.2 in | 1010 mm | 39.8 in | 1010 mm | 39.8 in |
| 9 Blade Lift Height | 767 mm | 30.2 in | 767 mm | 30.2 in | 767 mm | 30.2 in |
| 10 Digging Depth | 586 mm | 23.1 in | 572 mm | 22.5 in | 572 mm | 22.5 in |
| 11 Blade Cutting Edge Angle, Adjustable | 52° to 58° | | 52° to 58° | | 52° to 58° | |
| Maximum Tilt | 402 mm | 15.8 in | 448 mm | 17.6 in | 448 mm | 17.6 in |
| Maximum Angle (either side) | 25° | | 25° | | 25° | |
| Blade Width at Maximum Angle | 2636 mm | 103.8 in | 2669 mm | 105.1 in | 2940 mm | 115.8 in |
| Blade Capacity (SAE) | 2.19 m ³ | 2.86 yd ³ | 2.09 m ³ | 2.73 yd ³ | 2.34 m ³ | 3.06 yd ³ |

STANDARD EQUIPMENT

ELECTRICAL

- Alternator, 12 volt, 120 Amp, heavy duty brushless
- Alarm, backup
- Batteries (2), heavy duty, maintenance free, 2,000 CCA
- Diagnostic connector
- Horn, electric
- Lights, halogen, 2 front and 2 rear
- Starter, electric, 12 volt

OPERATOR STATION

- ROPS/FOPS canopy
- Seat, air suspended, cloth or vinyl
- Seatbelt, retractable 76 mm (3 in)
- Foot pads, dash
- Electronic Monitoring System with:
 - Gauges for engine coolant temperature, hydraulic oil temperature and fuel level
 - Travel speed limiter, electronic
 - Engine RPM and gear display
 - Hour meter, electric
 - Engine air cleaner service indicator, electronic
 - Water-in-fuel indicator, electronic
- Slope Indicate
- Throttle switch, rotary
- Eco mode
- Controls, seat mounted, fore/aft adjustment
- Armrests, adjustable
- Mirror, rearview, inside
- Single pedal combining deceleration and braking functions
- Independent forward/reverse speed settings
- Power port, 12 volt
- Coat hook
- Storage compartment
- Cup holder
- Floor mat, rubber, heavy duty

HYDRAULICS

- Hydraulics, 3 valve
- Load sensing hydraulics
- Single lever, three function control
- Hydraulic pump and oil
- Stable blade control

POWER TRAIN

- Cat C4.4 ACERT diesel engine, turbocharged, Tier 4 Final/Stage IV/ Japan 2014 (Tier 4 Final) certified with aftertreatment
- Aftercooler, Air-to-Air (ATAAC)
- Aluminum bar plate cooling system (radiator, power train)
- Air cleaner with precleaner, automatic dust ejection and under-hood intake
- Dual path, closed-loop hydrostatic transmission
- Electric fuel priming pump
- Fuel/water separator
- Automatic Traction Control

UNDERCARRIAGE

- SALT Undercarriage
- 7 roller track frame
- Track rollers, lifetime lubricated
- Carrier rollers
- Track adjusters, hydraulic
- Guards, front/rear guiding
- Master link

OTHER STANDARD EQUIPMENT

- Cat Product Link™ PL631 Satellite/PL641 Cellular
- C-Frame, VPAT, hydraulic cylinders and lines
- Lockable engine enclosures
- Front pull device
- Rigid drawbar
- Ecology drains (engine, power train and implement oil and engine coolant)
- Scheduled oil sampling ports (engine, power train implement oil)
- Vandalism protection
- Heavy duty crankcase guard

ANTIFREEZE

- Extended life coolant, -37° C (-35° F)

D5K2 Track-Type Tractor

OPTIONAL EQUIPMENT

ELECTRICAL

- Integrated four front halogen lights, two rear halogen lights

POWER TRAIN

- Drive, auxiliary
- Installation, winch

UNDERCARRIAGE

- Track Pairs, XL:
 - Track, 510 mm (20 in) MS SystemOne
- Track Pairs, LGP:
 - Track, 660 mm (26 in) MS SystemOne
 - Track, 762 mm (30 in) MS SystemOne

OPERATOR STATION

- Cab with air conditioning
- Cab, polycarbonate windows and air conditioning
- Seat, air suspension, choice of:
 - Vinyl, heated seat with heated controls
 - Cloth, heated seat with heated controls
 - Cloth, heated and ventilated seat with heated controls
- Radio, AM/FM, Bluetooth
- Sound suppression

HYDRAULICS

- Hydraulics, 4 valve for use with ripper
- Hydraulics, 4 valve for use with winch

GUARDS

- Guard, rear, heavy duty
- Grill, radiator, heavy duty
- Guard, track guiding, center
- Guard, track roller, full length
- Screen, rear, cab
- Screen, side, cab
- Screen, rear, canopy
- Screen, front and doors, canopy
- Sweeps, front
- Sweeps, rear

BLADES

- VPAT XL blade
- VPAT LGP blade
- VPAT Intermediate blade

REAR ATTACHMENTS

- Drawbar, towing
- Mounting, winch
- Ripper, parallelogram, includes three shanks and teeth

REAR ATTACHMENT CONTROL

- Control, ripper
- Control, winch
- Control, ripper and winch

MACHINE CONTROL AND GUIDANCE

- Installation, AccuGrade ready, includes Cat Grade Control Slope Assist
- Power Pitch blade control

STARTING AIDS

- Heater, engine, coolant, 120 volt
- Starting aid, ether

OTHER ATTACHMENTS

- Machine Security System

ANTIFREEZE

- Extended life coolant, -50° C (-58° F)

FIELD INSTALLED ATTACHMENT

- Winch, hydrostatic

For more complete information on Cat products, dealer services, and industry solutions, visit us on the web at www.cat.com

AEHQ7400 (01-15)

© 2015 Caterpillar
All Rights Reserved
Printed in U.S.A.

Materials and specifications are subject to change without notice. Featured machines in photos may include additional equipment. See your Cat dealer for available options.

CAT, CATERPILLAR, SAFETY.CAT.COM, their respective logos, "Caterpillar Yellow" and the "Power Edge" trade dress, as well as corporate and product identity used herein, are trademarks of Caterpillar and may not be used without permission.

