

# M314

## WHEELED EXCAVATOR



---

<b>Engine Power (ISO 14396:2002)</b>	100 kW (134 hp)
<b>Operating Weight Maximum</b>	18 000 kg (39,680 lb)

Cat® C3.6 engine meets U.S. EPA Tier 4 Final, EU Stage V, and Korea Tier 4 Final emission standards.





# THE NEW CAT® M314

## BOOSTING EFFICIENCY

The **Cat® M314** enhances your productivity with more comfort in the cab and easy-to-use controls. Lower fuel and maintenance costs put money back in your pocket.



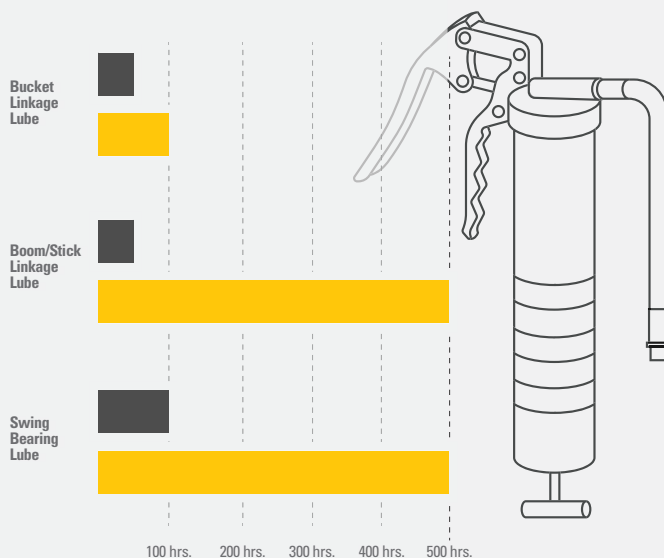
### NEXT GENERATION WHEELED EXCAVATORS

The new wheeled excavators match your performance needs to bring you

- + LOWER OPERATING AND MAINTENANCE COSTS
- + INCREASED OPERATOR EFFICIENCY AND VISIBILITY
- + MORE IN-CAB COMFORT



## DO MORE WORK WITH EXTENDED INTERVALS



\* M314F M314

## MAXIMIZE PERFORMANCE

Work faster with up to 15% more swing torque with lower fuel and DEF consumption. Tiltrotator integration gives you more versatility to complete more tasks with one machine.

## ENHANCED CAB COMFORT

Operate comfortably with the ergonomic control layout and cab options. Get better visibility with rear and side view cameras and 360° machine view.

## UP TO 10% MAINTENANCE PARTS SAVINGS<sup>1</sup>

Fewer maintenance costs, combined with 100 percent daily ground level maintenance and shareable work tools, increase uptime and keep costs down.

<sup>1</sup> Compared to M314F.



# CAT EQUIPMENT MANAGEMENT TECHNOLOGY

## TAKES THE GUESSWORK OUT OF MANAGING YOUR EQUIPMENT

**Cat Equipment Management** telematics technology helps take the complexity out of managing your jobsites – by gathering data generated by your equipment, materials, and people and serving it up to you in customizable formats.



### **PRODUCT LINK™**

Product Link™ collects data automatically and accurately from your assets – any type and any brand. Information such as location, hours, fuel usage, productivity, idle time, maintenance alerts, diagnostic codes, and machine health can be viewed online through web and mobile applications.



### **VISIONLINK®**

Access information anytime, anywhere with VisionLink® – and use it to make informed decisions that boost productivity, lower costs, simplify maintenance, and improve safety and security on your jobsite. With different subscription level options, your Cat dealer can help you configure exactly what you need to connect your fleet and manage your business without paying for extras you don't want. Subscriptions are available with cellular or satellite reporting (or both).



**Remote Services** is a suite of technologies that improve your jobsite efficiency.

**Remote Troubleshoot** allows your Cat dealer to perform diagnostic testing on your connected machine remotely, pinpointing potential issues while the machine is in operation. Remote Troubleshoot ensures the technician arrives with the correct parts and tools the first time, eliminating additional trips to save you time and money.

**Remote Flash** updates on-board software without a technician being present, potentially reducing update time by as much as 50%. You can initiate the update when convenient, increasing your overall operating efficiency.

The **Cat App** helps you manage your assets – at any time – right from your smartphone. You can see your fleet location, hours, and other information you need to see. You will get critical alerts for required maintenance, and you can even request service from your local Cat dealer.

# BOOST YOUR PRODUCTIVITY BY UP TO 45%

## WITH SIMPLE-TO-USE INTEGRATED CAT TECHNOLOGY



### TECHNOLOGIES INCLUDE:



#### CAT GRADE WITH 2D

Cat Grade with 2D helps operators reach grade faster. Onboard processors and sensors provide real-time guidance on distance to grade without guesswork. Work safer with fewer ground personnel needed to check the work area for obstacles or grade.



#### CAT PAYLOAD

Onboard weighing system increases loading efficiency with on-the-go weighing. Combine with VisionLink® to manage your production targets remotely (available for download to USB).



Cat Technology gives you the edge. Operators of all experience levels will dig, load and grade with more confidence, speed, and accuracy to save time and money.

# CAT TECHNOLOGY MORE WORK, LESS TIME



## GET JOBS DONE FASTER WITH LESS REWORK

Cat Grade with Advanced 2D\* lets you create and edit grade designs with ease on a second high-resolution 254 mm (10 in.) touchscreen monitor. Cat Grade with 3D\* adds real-time, pinpoint positioning using GPS and GLONASS.

\*All Cat Grade systems are compatible with radios and base stations from Trimble.  
Already invested in a grade infrastructure? You can install grade systems from Trimble onto the machine.

Get in and out of the cab more easily with the tilt-up left console. Deluxe and Premium cab options offer supreme comfort from a heated/cooled seat to automatic temperature control.

# CAB TAKES THE HARD OUT OF WORK



## ERGONOMIC CONTROL LAYOUT

Controls are positioned to reduce fatigue and straining movements to help keep you operating at your full potential.

## REDUCED CAB VIBRATIONS

Feel more comfortable in the cab while you work with reduced cab vibrations from advanced viscous mounts.

## BLUETOOTH® CONNECTION

Bluetooth® integrated radio allows for seamless mobile phone connection to listen to music, podcasts and hands-free calling.



## LONGER SERVICE INTERVALS

The in-cab monitor tracks filter life and machine intervals, so you always know when it's time for regular machine service.

## GROUND LEVEL ACCESS

Complete your daily machine checks entirely from the ground, minimizing the need to access the upper platform.

## NEW FILTERS

Two levels of filtration protect your engine from dirty diesel. The new hydraulic oil filter improves filtration performance and lasts up to 50 percent longer than previous filter designs.

SAVE UP TO

**10% IN MAINTENANCE PARTS**







## KEYLESS PUSH START

Start the engine with the push-to-start button, or the unique Operator ID function.



## MACHINE SETTINGS

Access the operator manual at your fingertips, as well as the power mode selector to keep productivity while using less fuel.



## JOYSTICK PREFERENCES

Program in your preferred power mode and joystick preferences with your Operator ID. Once you enter in your Operator ID, the excavator remembers your settings each time.



## TOUCHSCREEN MONITOR

Use the standard 254 mm (10 in) touchscreen monitor to adjust your heating/cooling setting for more comfort, or to view your machine information.



## SMARTBOOM™

---

Add SmartBoom to reduce stress and vibration to make finishing work easy and fast. SmartBoom allows more focus on stick and bucket, while the boom moves freely up and down without using pump flow.

## TRAVEL SMARTER

---

Easily work with the swing and auto travel lock or the automatic brake and axle lock to reduce the number of tasks you need to do. Set your cruise control when traveling distance from site to site.

## RIDE CONTROL

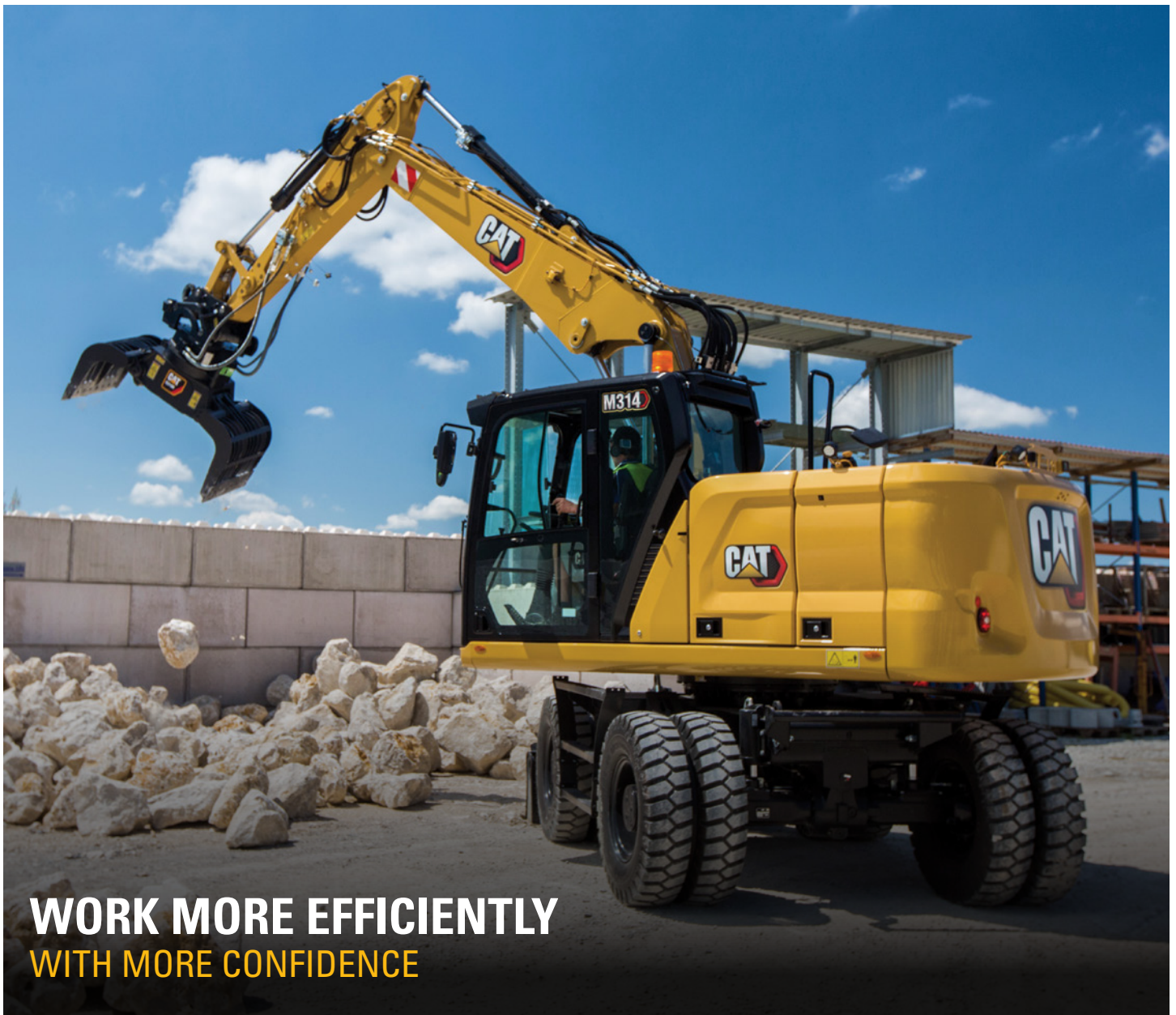
---

The ride control system lets you travel faster over rough terrain with improved ride quality. Accumulators act as shock absorbers to help make your journey smoother.

## JOYSTICK STEERING

---

Keep both hands on the joysticks while simultaneously moving the boom and stick and repositioning the machine with the slider switch on the right joystick.





# EXPAND YOUR JOB SITE CAPABILITIES

## WITH MORE SWING TORQUE AND FUEL EFFICIENCY

A 15 percent increase in swing torque versus the previous model makes traveling, swinging, and working on slopes easy. Backfill trenches and move around your jobsite faster than before – allowing you to be more productive and finish jobs quickly. An advanced hydraulic system provides the optimum balance of power and efficiency while giving you the control you need for precise digging requirements.





# LOOK OUT FOR YOUR PEOPLE AND YOUR EQUIPMENT

## SAFETY FEATURES



### STAY SAFE EVERY DAY

#### FACT:

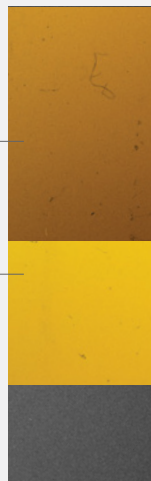
#1 cause of construction accidents: **FALLS\***

**49%** OF FALLS RESULT  
IN SERIOUS INJURY

**30%** OF FALLS RESULT  
IN DEATH

**100%** GROUND-LEVEL  
MAINTENANCE  
HELPS PREVENT FALLS

#### FALLS



\*<https://www.ncbi.nlm.nih.gov/pmc/articles/PMC4962179/>

Daily maintenance checks can be performed with 100% of the points accessible from ground level, making maintenance faster, easier, and safer. Standard LED lights give you a better view of your jobsite.

- + Enjoy better visibility into trenches, in each swing direction, and behind you. The smaller cab pillars, larger windows, and a flat engine hood design lower obstruction to your view. Rearview and sideview cameras are standard, and the 360 degree view system option offers a higher viewing vantage point of the machine.
- + The standard sound suppression ROPS cab meets ISO 12117-2:2008 requirements and helps to block the noise to stay focused on the job.
- + The service platform design provides easy, safe, and quick access to upper platform. The steps use anti-skid punch plate to prevent slipping.
- + The auto axle lock presses the pedal for you to reduce your overall number of actions. The machine automatically detects when the service brake and axle need to be locked or unlocked. It releases automatically when you press the travel pedal.



# INCREASE PRODUCTIVITY AND VERSATILITY WITH CAT ATTACHMENTS

You can easily expand the performance of your machine by utilizing any of the variety of Cat Attachments. Each Cat Attachment is designed to fit the weight and horsepower of Cat Wheeled Excavators for improved performance, safety, and stability. Lower your costs by sharing the same attachments as the 313 Cat Excavator.

**BUCKETS**



**GRAPPLES**



**HYDRAULIC HAMMERS**



**QUICK COUPLER**



**SHEARS**



**VIBRATORY PLATE  
COMPACTORS**



**MULCHERS**



**TILTROTATOR\***



**PIN GRABBER COUPLER**



\*Not all features are available in all regions. Consult your Cat dealer for specific configurations available in your region.

# TECHNICAL SPECIFICATIONS

See *cat.com* for complete specifications.

ENGINE		
Engine Model	Cat C3.6	
Engine Power (ISO 14396:2002)	100 kW	134 hp
Maximum Net Power (ISO 14396:2002)	136 mhp (PS)	
Bore	98 mm	3.9 in
Stroke	120 mm	5 in
Displacement	3.6 L	221 in³
<ul style="list-style-type: none"> <li>• The Cat C3.6 meets Tier 4 Final, Stage V, and Korea Tier 4 Final emission standards.</li> <li>• Engine power advertised is the power available at the flywheel when the engine is equipped with fan, air cleaner, exhaust gas aftertreatment, and alternator.</li> <li>• Rating at 2,000 rpm.</li> <li>• Blue Angel Certified</li> </ul>		
HYDRAULIC SYSTEM		
Main System – Maximum Flow – Implement	270 L/min	71 gal/min
Maximum Pressure – Equipment	35 000 kPa	5,076 psi
Maximum Pressure – Travel	35 000 kPa	5,076 psi
Maximum Pressure – Swing	35 500 kPa	5,149 psi
SWING MECHANISM		
Swing Speed	9.1 rpm	
Maximum Swing Torque	41.3 nm	30,461 lb-ft
MACHINE WEIGHT		
Operating Weight Minimum	14 600 kg	32,190 lb
Operating Weight Maximum	18 000 kg	39,680 lb
<ul style="list-style-type: none"> <li>• Operating weight includes full fuel tank, operator, 500 kg (1,102 lb) bucket and dual pneumatic tires. Weight varies depending on configuration.</li> </ul>		
SERVICE REFILL CAPACITIES		
Fuel Tank	295 L	77.9 gal
Cooling System	20 L	5.3 gal
Engine Oil	9 L	2.4 gal
Diesel Exhaust Fluid (DEF)	20 L	5.3 gal
Final Drive	2.4 L	0.6 gal
Hydraulic System (including tank)	220 L	58.1 gal
Hydraulic Tank	90 L	23.8 gal

TRANSMISSION		
Forward/Reverse		
1st Gear	9 km/h	5.6 mph
2nd Gear	37 km/h	23 mph
Creeper Speed		
1st Gear	5 km/h	3.1 mph
2nd Gear	15 km/h	9.3 mph
Drawbar Pull	73 kN	16,411 lbf
Maximum Gradeability at 15 000 kg/33,070 lb		52.5%
DIMENSIONS		
Boom	VA 5028 mm (16'6")	
Stick	2200 mm (7'3")	
Bucket	GD 0.76 m³ (0.99 yd³)	
Shipping Height (top of cab)	3315 mm	10'11"
Shipping Length	8210 mm	26'11"
Tail Swing Radius	2150 mm	7'1"
Counterweight Clearance	1260 mm	4'2"
Ground Clearance	335 mm	1'1"
Undercarriage Length	4920 mm	16'2"
Wheel Base	2500 mm	8'2"
WORKING RANGES AND FORCES		
Boom Type	VA 5028 mm (16'6")	
Stick	2200 mm (7'3")	
Bucket	GD 0.76 m³ (0.99 yd³)	
Dump Height	7010 mm	23'0"
Digging Height	5290 mm	17'4"
Reach at Ground Level	8650 mm	28'5"
Vertical Wall Digging Depth	4250 mm	13'11"
• Range values are calculated with a tip radius of 1387 mm (4'6"). CW-type bucket (358-8665, GD, 1000 mm/3'3", 0.6 m³/0.73 yd³, with Advansys™ 70 tips) and CW-20S-D.4.N quick coupler. Breakout force values are calculated with a tip radius of 1224 mm (4'0") and heavy lift on. Pin-On Bucket (358-8619, GD, 1100 mm/3'7" 0.68 m³/0.89 yd³ with Advansys 70 tips) with no quick coupler.		
AIR CONDITIONING SYSTEM		
The air conditioning system on this machine contains the fluorinated greenhouse gas refrigerant R134a (Global Warming Potential = 1430). The system contains 0.85 kg of refrigerant which has a CO <sub>2</sub> equivalent of 1.216 metric tonnes.		



# STANDARD & OPTIONAL EQUIPMENT

Standard and optional equipment may vary. Consult your Cat dealer for details.

CAB	STANDARD	OPTIONAL
ROPS, sound suppression	•	
Keyless push-to-start engine control	•	
Openable two-piece front window	•	
One piece windshield		•
Deluxe cab		•
Premium cab		•
High-resolution 254 mm (10 in) LCD touchscreen monitor	•	
CAT TECHNOLOGIES	STANDARD	OPTIONAL
Product Link	•	
Remote Flash/Troubleshoot Capability	•	
Cat Grade with 2D		•
Cat Grade with Advanced 2D		•
Cat Grade with 3D		•
Cat Payload		•
2D E-Fence		•
Laser Catcher		•
ENGINE	STANDARD	OPTIONAL
Power Mode Selector	•	
One-touch low idle with auto engine speed control	•	
Auto engine idle shutdown	•	
52° C (125° F) high-ambient cooling capacity	•	
-18° C (0° F) cold start capability	•	
Double element air filter with integrated precleaner	•	
Biodiesel capability up to B20	•	
HYDRAULIC SYSTEM	STANDARD	OPTIONAL
Boom and stick regeneration circuits	•	
Auto hydraulic warm up	•	
Boom and stick drift reduction valve	•	
Slider joysticks (two types)		•
Ride control		•
Cat TRS support		•
Joystick steering		•
Combined flow/high-pressure auxiliary circuit		•
Quick coupler circuit		•

BOOM AND STICKS	STANDARD	OPTIONAL
4650 mm (15'3") One-Piece Boom <sup>1</sup>		•
4400 mm (14'5") One-Piece Boom <sup>2</sup>		•
5028 mm (16'6") Variable Adjustable Boom		•
2200 mm (7'3") stick		•
2500 mm (8'2") stick		•
2900 mm (9'6") Drop Nose stick without bucket linkage <sup>3</sup>		•
UNDERCARRIAGE AND STRUCTURES	STANDARD	OPTIONAL
Tires, 10.00-20 16 PR, dual	•	
Tires, 10.00-20, dual, solid rubber		•
Tires, 9.00-20 16 PR, dual <sup>2</sup>		•
Automatic brake/axle lock	•	
3300 kg (7,275 lb) counterweight	•	
Fenders		•
ELECTRICAL SYSTEM	STANDARD	OPTIONAL
Two 900 CCA maintenance-free batteries	•	
Roading and indicator lights, front and rear	•	
Programmable time-delay LED working lights	•	
LED chassis light, left-hand/right-hand boom lights, cab lights	•	
Electrical refueling pump		•
SERVICE AND MAINTENANCE	STANDARD	OPTIONAL
Sampling ports for Scheduled Oil Sampling (S-O-S <sup>SM</sup> )	•	
Ground-level and platform-level engine oil dipsticks	•	
SAFETY AND SECURITY	STANDARD	OPTIONAL
Rear and right-side-view cameras	•	
360° visibility		•
Wide angle mirrors	•	
Ground-level engine shutoff switch	•	
Handrail and hand holds on service platform	•	
Signaling/warning horn	•	

<sup>1</sup> Available in Europe, Australia and New Zealand only

<sup>2</sup> Available in South Korea only

<sup>3</sup> Available in Europe only

**Not all features are available in all regions. Please check with your local Cat dealer for specific offering availability in your area.**

For additional information and additional regional offerings, refer to the Technical Specifications brochure available at [www.cat.com](http://www.cat.com) or your Cat dealer.

For more complete information on Cat products, dealer services and industry solutions, visit us on the web at [www.cat.com](http://www.cat.com)

© 2021 Caterpillar. All Rights Reserved.

Materials and specifications are subject to change without notice. Featured machines in photos may include additional equipment. See your Cat dealer for available options.

CAT, CATERPILLAR, LET'S DO THE WORK, their respective logos, "Caterpillar Corporate Yellow," the "Power Edge" and Cat "Modern Hex" trade dress as well as corporate and product identity used herein, are trademarks of Caterpillar and may not be used without permission. VisionLink is a trademark of VirtualSite Solutions LLC, registered in the United States and in other countries.  
[www.cat.com](http://www.cat.com)   [www.caterpillar.com](http://www.caterpillar.com)

AEXQ3135-01  
Replaces: AEXQ3135-00  
Build Number: 07B  
(ANZ, Eur, Korea, N Am)

