

M322F

Wheeled Excavator



Engine

Engine Model	Cat® C7.1 ACERT™
Emissions	EU Stage IV
Net Power (Maximum)	
ISO 9249 at 1,700 rpm	126 kW (169 hp)
ISO 9249/SAE J1349 at 1,700 rpm (metric)	171 hp (PS)
ISO 14396 at 1,700 rpm (gross)	128.9 kW (173 hp)

Weights

Operating Weight with Attachment	20 560-24 700 kg
----------------------------------	------------------

Bucket Specifications

Bucket Capacities	0.6-1.43 m ³
-------------------	-------------------------

Working Ranges

Maximum Reach at Ground Level	10 300 mm
Maximum Digging Depth	6650 mm

Drive

Maximum Travel Speed	30 km/h
----------------------	---------

M322F Features

Made to keep your costs down.

Not only does the machine give you all the versatility you need, but it does so while providing a great deal of precision and speed with an absolute minimum fuel consumption – and zero impact on your efficiency.

Made to make operation easy and pleasant.

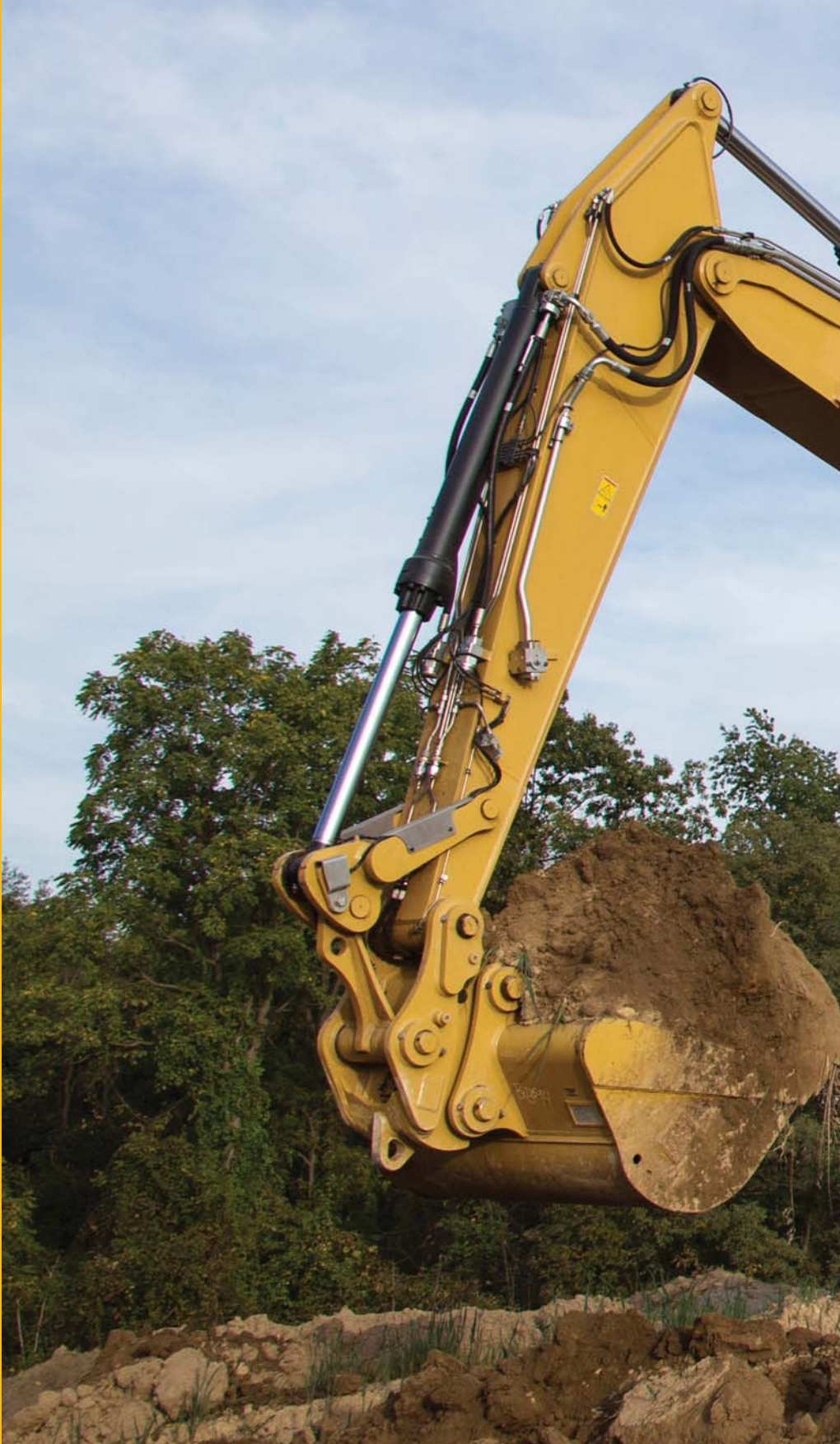
Have a seat, you will be impressed by the quietness and comfort of the cab. Feel relaxed, we help you make sure you're safe.

Enjoy integrated technologies; they act transparently.

When you add the ground level grouped service points that make your maintenance quick and easy and multiple Cat attachments that help you do all kinds of jobs, you simply won't find a better machine.

Contents

Sustainability	4
Engine	5
Built-in Fuel Savers That Add Up	5
Premium Comfort	6
Simplicity and Functionality	7
The Next Generation	8
Cruise Control	8
Smart Technologies	9
Dig and Go Auto Axle Lock.....	9
Hydraulics	10
Undercarriage	11
Booms and Sticks	12
SmartBoom™	13
Ride Control.....	13
Attachments.....	14
Serviceability	16
Integrated Technologies.....	17
Safety	18
Unmatched Visibility.....	20
Complete Customer Care.....	20
Specifications.....	21
Standard Equipment.....	33
Optional Equipment.....	35





The new F Series generation is here to help you take on the wide variety of challenges you face every day, more easily and with more pleasure.

F Series – Easier Than Ever.



Sustainability

Generations Ahead in Every Way

Fuel Efficiency and Reduced Exhaust Emissions

The engine meets Stage IV emission standards, performs the same amount of work, while burning less fuel than the previous model, which means more efficiency, less resources consumption, and fewer CO₂ emissions.

Quiet Operation

Outstandingly low sound levels, you won't believe your machine is running.

Transparent Technologies and Longer Service Intervals

- The new Eco Mode, Auto Engine Speed Control and Engine Idle Shutdown help further reduce your overall fuel consumption.
- Product Link™ allows remote monitoring of the machine and helps improve overall efficiency.
- Your Cat dealer can help extend service intervals, meaning fewer fluids and disposals, all adding up to lower costs.

Biodiesel and Biodegradable Hydraulic Oil

- The M322F has the flexibility of running on either ultra-low-sulfur diesel (ULSD) fuel with 10 ppm of sulfur or less or up to B20 biodiesel fuel blended with ULSD.
- Cat BIO HYDO™ Advanced HEES™ reduces the impact on the environment.

Cat Certified Used

This program is a key element in the range of solutions offered by Caterpillar and Cat dealers to help customers achieve growth at the lowest cost while eliminating waste. Used equipment is inspected, guaranteed and ready for work and customers will benefit from a Caterpillar warranty.

Engine

Power, Reliability, and Fuel Economy

The Power and Performance You Need

Constant Power Strategy

Provides a quick response to changing loads, while delivering the same amount of power regardless of operating conditions.

A Transparent Emission Solution That Works.

The Cat C7.1 ACERT engine meets today's Stage IV emission standards, and it does so without interrupting your job process. It is designed to be:

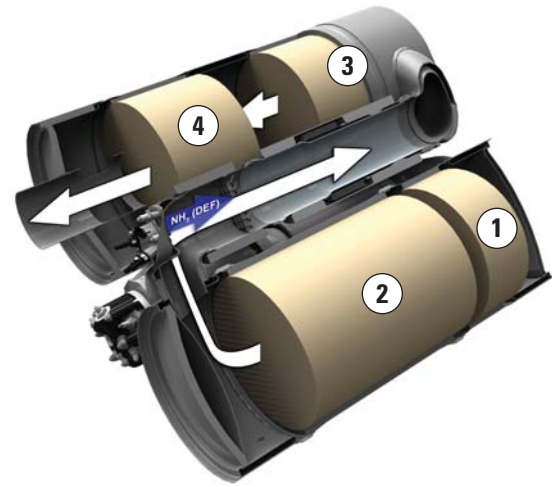
- **Transparent:** no operator intervention
- **Durable:** fit for life Diesel Particulate Filter
- **Efficient:** no work interruption, even in case of extended idling time
- **Simple:** minimum maintenance. Longitudinal engine installation, which further simplifies maintenance.

Biodiesel Not a Problem

The engine can run on up to B20 biodiesel fuel that meets ASTM 6751 standards – all to give you more potential fuel-saving flexibility.

Proven Technology

To assure that our technology will meet your expectations for reliable trouble-free service, we subjected these engines and technologies to extensive operating hours of test and validation.



- 1) Diesel Oxidation Catalyst
- 2) Diesel Particulate Filter
- 3) Selective Catalyst Reduction Catalyst
- 4) Ammonia Oxidation Catalyst

Built-in Fuel Savers That Add Up

- Automatic Engine Speed Control: lowers engine speed when it is not needed.
- NEW Engine Idle Shutdown (when activated): turns the engine off when it's been idling for more than a pre-set amount of time.
- NEW Cooling System: variable speed and on-demand fan optimizing consumption.
- NEW enhanced Eco Mode: reduces engine speed while delivering the same power.
- Automatic shift to Travel Mode when you start riding: optimizes driveline performance while preserving fuel.



Premium Comfort

Keeps Operators Productive All Shift Long



Legacy from the Renowned Cat Wheeled Excavators

Designed for the operator, our cabs are unique.

Ergonomic Layout

- Frequently used switches are centralized, kept to the minimum and ideally located close to the joysticks.
- Storage compartments are useful... when well designed. The lunch box provides sufficient room to store a hard hat. Several other areas include drink, phone, or key holders.

Comfortable Seat Options

Our seats provide all the comfort needed for a long day of work, including FULL adjustment. All seats are heated and air suspended. Automatic weight adjustment and air cooled seats are available.

Safety – Not Optional

ROPS cab, compatible with FOPS, seat belt alarm, safety bar, sideview camera ... among others.

Details That Make the Difference

Have a look at the cab; you will see it is through details that we improve pleasure of operating.

Smart Controls to Reduce Fatigue

- Features like ride control, SmartBoom or Joystick Steering will be precious to increase your productivity.
- New technologies that work transparently like the swing and auto travel lock or the automatic brake and axle lock, reduce the number of tasks you need to do.

Plug, Charge and Play Your Devices

- The 12V 10A power supply socket is conveniently located for charging your laptop, or a tablet.
- A CD/MP3 Radio with speakers and USB port is available.





Simplicity and Functionality

For Ease of Operation

A Cab Just for You – Fully Adjustable

- Seat armrests, in height and angle
- Steering column adjustment, not only tilting fore/aft but also in height
- Hydraulic sensitivity of the machine to make it more or less aggressive
- Joystick controls, buttons and thumb wheels
- Automatic air conditioning

Incredibly Low Sound Levels, Less Fatigue

Operator sound level has been reduced thanks to a new cab design and increased cab pressure, which also prevents from dust entry. Add in new hydro mounts to fix the cab on the frame and you have a cab that's as quiet as any of today's premium cars.

Outstanding Visibility: See the Difference!

- Standard LED working lights and halogen roading lights
- Standard LED dome light
- All glass areas have been drastically increased
- Choice of 70/30 front windshield or one-piece windshield
- New wide angle mirrors including a lower mirror for better visibility to the ground
- Parallel intermittent (four speeds) wipers covering the whole windshield

Standard Rear and Side Wide Angle Cameras

Cameras let you see what's going on around. The image from the side camera is displayed on an additional wide color screen, offering the full view from the front to the rear of the machine. The rear camera is integrated into the counterweight for enhanced protection.

Large Color Monitor

Easy to read and in local language, the high resolution LCD monitor will keep you aware of any important information. "Quick Access" buttons allow a quick selection of favorite functions. The tool select function lets you preset up to ten different hydraulic attachments for quick tool changes.

The Next Generation

Easier Than Ever



Make the Move to the Next Generation

Refinements. From the whole design to the smallest details. Convenient features, new advanced and transparent technologies, not only to reduce emissions but to further improve your daily experience when working with our products.

Easier Than Ever

Work like no other with our wheeled excavators. The F Series generation is made to help you take on the wide variety of the challenges you face every day, more easily and with more pleasure, to keep you on the road to your success.

Cruise Control

Focus on the Road, Not on Your Foot

Cruise Control

No need to press the pedal all the time.

- Choose the very speed you wish
- Press the quick access button on the monitor
- Enjoy the ride

It's as Easy as That.



Smart Technologies

Press Go and Relax

Swing and Auto Travel Lock: As Fast, As Easy, As Safe

No need for the operator to bend to engage the swing lock pin.

- Just press a button,
- Align the upper to the lower frame,
- Enjoy the ride: a green indicator confirms the swing and the implements have been automatically locked.

It's As Easy As That.

Integrated Pin Code – Switch Off and Relax

No need to buy an optional security system to protect your equipment against theft.

- The pin code is integrated into the monitor (standard)
- Entering the right code allows the engine to start

The Machine Security System (MSS – optional) adds even more protection when needed.

It's As Easy As That.



Dig and Go Auto Axle Lock

Presses the pedal for you, reducing the number of actions you need to do

The machine automatically detects when the service brake and axle need to be locked (like when digging), or unlocked (roading), hence removing the need for the operator to systematically press the pedal.

Brake and axle are released automatically by pressing the travel pedal again.



Hydraulics

Fast, Precise, Flexible

When it comes to moving material quickly, you need efficient hydraulics – the type the F Series can deliver.

Efficient Design, Smart and Fast

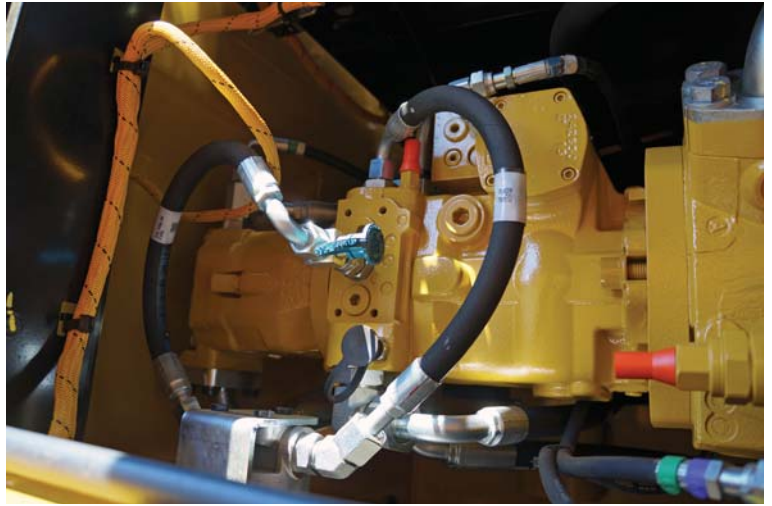
- **Simple Design:** The new hydraulic valve compartment and routings offer a simple and clean design to help ensure durability. Everything is reachable from ground level.
- **Smart Main Hydraulics:** The system allows reducing the load on the engine when not needed, which translates into lower fuel consumption.
- **Dedicated Swing Pump:** A closed hydraulic circuit is dedicated to the swing only. Having two separate pumps, one for the swing and the other for the other functions allows faster and smoother combined movements.

Control Like No Other

- **Electronic Pump Control** – Controllability is one of the main attributes of Cat excavators, and one of the key contributors to this is the Electronic Pump Control (EPC) that's designed to improve response time and precision. It puts flow exactly where you need it, when you need it, which means a much smoother operation and greater efficiency.
- **Adjustable Hydraulic Sensitivity** – Allows you to adjust the aggressiveness of the machine according to the application.
- **Stick Regeneration Circuit** – Increases efficiency and helps enhance controllability for higher productivity.

Proportional Auxiliary Hydraulics, Tremendous Versatility

Medium pressure function (for tilting buckets or rotating tools), high pressure lines and circuit, hydraulic quick coupler circuit: they all come standard, which allows you to switch from one attachment to another, without the need to add lines and hydraulic circuits.





Undercarriage

Strength and Versatility at 30 km/h



Heavy Duty Axles

Long life with effective heavy duty axles. The transmission is mounted directly on the rear axle for protection and optimum ground clearance. The front axle offers wide oscillating and steering angles. The drive shaft offers longer service intervals (1,000 hours).



Advanced Disc Brake System

Minimizes the rocking effect when working free on wheels. The disc brake system acts directly on the hub instead of the drive shaft to avoid planetary gear backlash.



Joystick Steering

Keep both hands on the joysticks even when simultaneously moving the implements and repositioning the machine, by the use of the slider switch on the right joystick.

New Blade Design

- Parallel kinematic to keep the blade parallel to the ground, in every height position
- A profile that allows material to roll better and minimizes material packing

Booms and Sticks

Options To Take on Your Far-reaching or Up-close Tasks

Rugged Performance

Booms and sticks are welded, box section structures with thick, multi-plate fabrications in high stress areas for the tough work you do.

Flexibility

The choice of various booms and sticks provides the right balance of reach and digging forces for all applications.

Sticks

- **Medium stick** – 2500 mm for greater crowd force and lift capacity
- **Long stick** – 2900 mm for greater depth and reach

Booms

- **Variable Adjustable (VA)** – Improved right side visibility and roading balance. When working in tight quarters or lifting heavy loads, the VA boom offers the best flexibility.
- **One-Piece Boom** – Fits best for all standard applications such as truck loading and digging. A unique straight section in the curve of the side plate reduces stress flow and helps increase boom life.



SmartBoom

Reduces Stress and Vibration

Rock Scraping

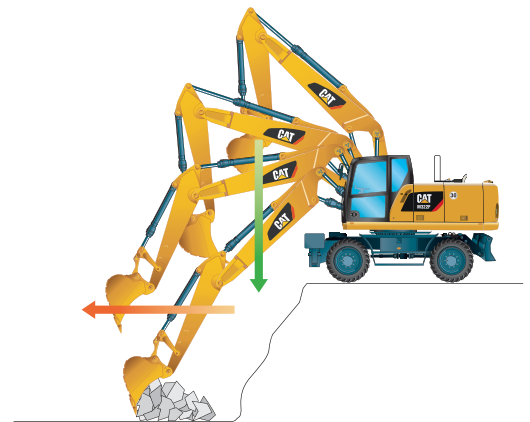
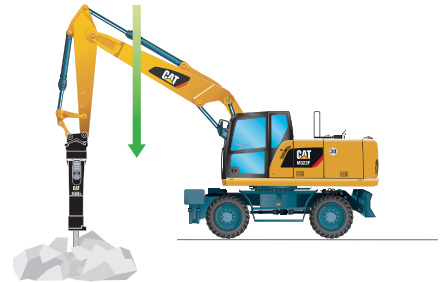
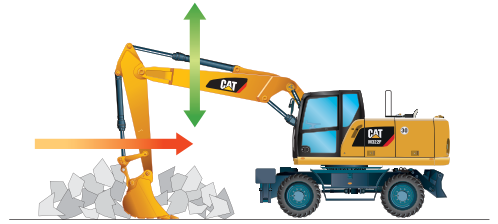
Scraping rock and finishing work is easy and fast. SmartBoom simplifies the task and allows more focus on stick and bucket, while the boom freely goes up and down without using pump flow.

Hammer Work

The front parts automatically follow the hammer while penetrating the rock. Blank shots or excessive force on the hammer are avoided resulting in longer life for the hammer and the machine. Similar advantages with vibratory plate compactors.

Truck Loading

Loading trucks from a bench is more productive and fuel efficient as the return cycle is reduced while the boom down function does not require pump flow.

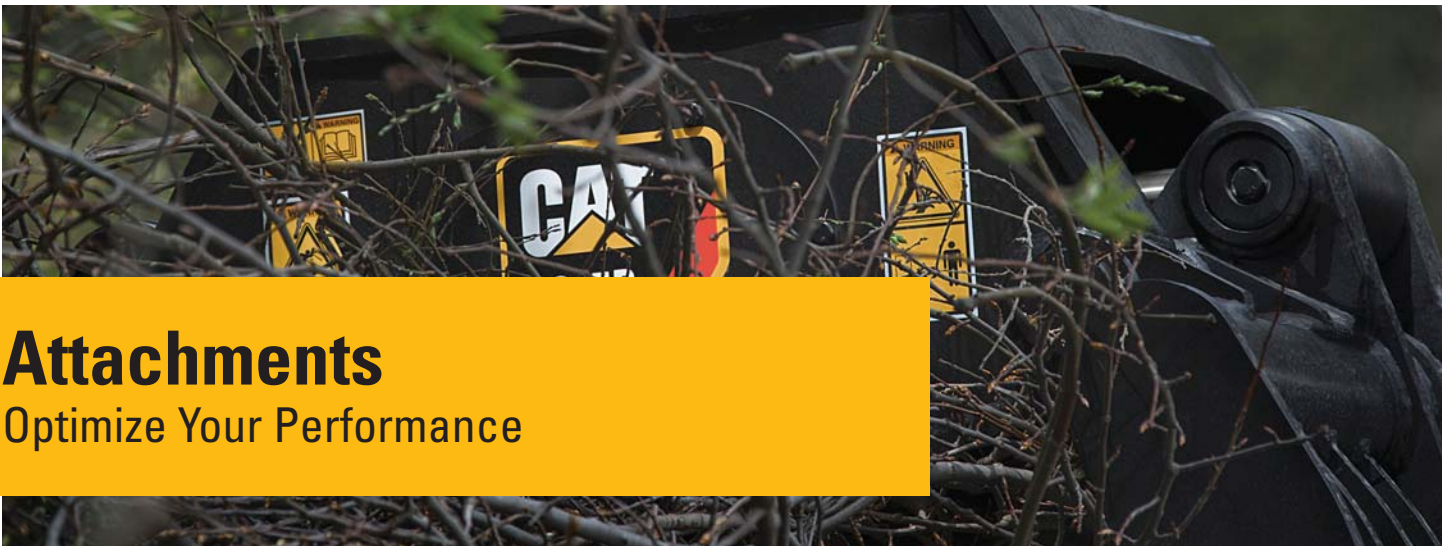


Ride Control

Fast Travel Speed with More Comfort

The ride control system lets you travel faster over rough terrain with improved ride quality for the operator. Accumulators are acting as shock absorbers to dampen the front part motion. It can be activated through a button located on the soft switch panel in the cab.





Attachments

Optimize Your Performance



Save Time with Every Attachment Change
Perform hydraulic attachment changes in seconds ... The new Auto-Connect hydraulic coupler automates work tool exchange fully, so operators can change attachments quickly, from the safety and comfort of their cabs. The unique design of the Auto-Connect prevents ruptured hoses, avoiding unplanned downtime. It makes your operators more efficient and productive.



Power Match

Match your Cat hydraulic attachments to your Cat machine, and get the most out of the standard, built-in software. Attachment changes have never been easier!

Get the Most from Your Machine

If you have multiple tasks to get done, the M322F can help. You can easily expand all the possibilities it offers by utilizing any of the variety of Cat attachments.

Change Jobs Quickly

A quick coupler brings the ability to quickly change attachments and increase your flexibility. The new quick coupler circuit and lines are compatible with both Cat dedicated and Pin Grabber Couplers and do not require any change or addition to the machine.

Dig, Load and Landscape

A wide range of buckets offers solutions for digging, excavating, trenching, loading and finishing. Ditch Cleaning buckets are suitable for grading and finishing in landscaping applications or for loading loose material that is stockpiled, where teeth would damage the surface.

Sort and Handle Material

With increasing environmental regulations, you need efficient ways to deal with waste. Save on transportation, manpower and dumping costs with Cat grapples by sorting debris at source and trucking it separately. When you need good penetration, you can count on Cat digging grabs.

Build, Compact and Maintain Roads

Whether you do finish grading with leveling buckets, ditch cleaning, sewer and water, or compaction, the machine in combination with the appropriate attachment will do the job quickly.

Break and Scrap

When a structure needs to be demolished, it has to be done quickly. The Cat MP300 Multi-Processors let you do exactly that. Cat E Series hammers deliver very high blow rates, and shears provide effective scrap processing.



Serviceability

When Uptime Counts

Convenient Access Built In

You can reach routine maintenance items like fuel and engine oil filters and fluid taps at ground level while fuel and DEF tanks with engine air filter are accessible from the safety of the slip-resistant new service platform. Compartments feature wide composite service doors, designed to be more resistant to shocks, which all include gas struts to facilitate the opening. Components are now gathered in specific dedicated compartments, like the special electrical and cooling compartments.

A Smart Design for Any Temperature

The side-by-side and axial fan design allows greater cooling performance. The system is completely separated from the engine compartment to reduce noise and heat and all radiators are gathered in the same compartment while featuring easy-to-clean cores with a tilting device that requires no tool to unlock.

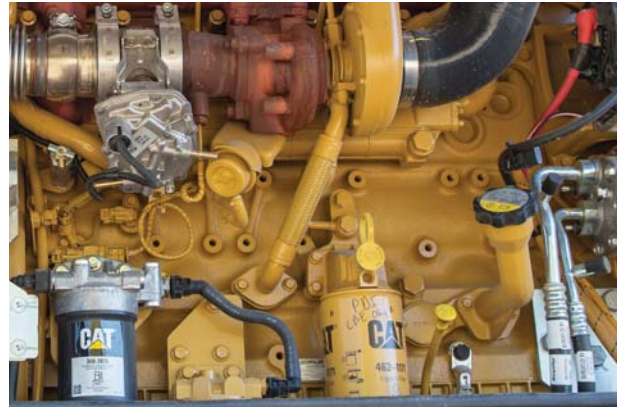
A Fresh Idea

Ventilation inside the cab allows outside air to enter through a fresh air filter. The filter is located on the side of the cab to make it easy to reach, and it is protected by a lockable door that can be opened with the ignition key.

Lube and Fuel Standard Features

An electric lubrication system is a time-saving standard feature for greasing the whole upper carriage. Greasing points for the undercarriage are kept to a minimum and grouped. An electric refueling pump is also standard. The hose is stored in a dedicated tray, for more cleanliness. Add in the new electric lift pump removing the need to prime the system manually, the standard fuel and water separator and you get a machine that does the fastidious works for you.

Keep it simple.



Integrated Technologies

It Pays to Know



Cat Connect makes smart use of technology and services to improve your job site efficiency. Using the data from technology-equipped machines, you'll get more information and insight into your equipment and operations than ever before.

Cat Connect technologies offer improvements in these key areas:



EQUIPMENT MANAGEMENT

Equipment Management – increase uptime and reduce operating costs.



PRODUCTIVITY

Productivity – monitor production and manage job site efficiency.



SAFETY

Safety – enhance job site awareness to keep your people and equipment safe.

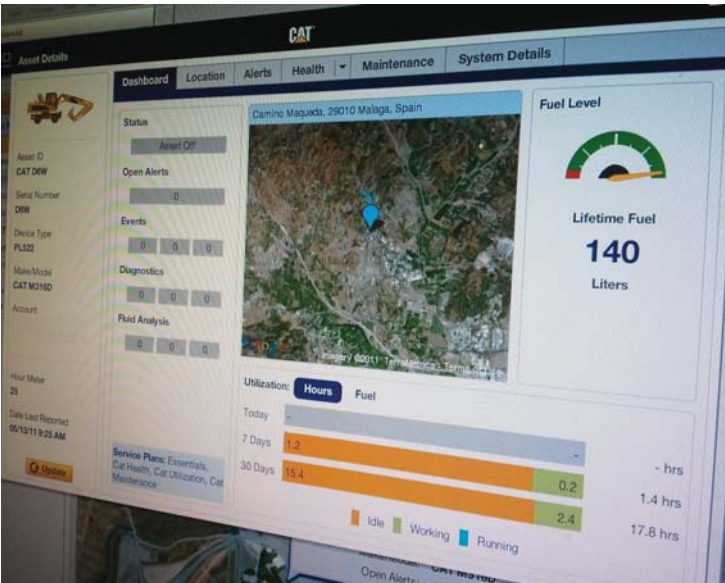
Featured Cat Connect technologies include the following:

Link

Link technologies provide wireless capability to machines to enable two-way transfer of information collected by on-board sensors, control modules, and other Cat Connect technologies.

Manage Your Machine Remotely

Cat Product Link is a system that is deeply integrated into the machine monitoring system to take the guesswork out of managing your equipment. The system tracks location, hours, fuel usage, productivity, idle time, and diagnostic codes and shares it with you through VisionLink® to help you maximize efficiency, improve productivity, and lower operating costs.



CAT® CONNECT



EQUIPMENT MANAGEMENT



PRODUCTIVITY



SAFETY



SUSTAINABILITY

Safety

Your Safety Is NOT Optional

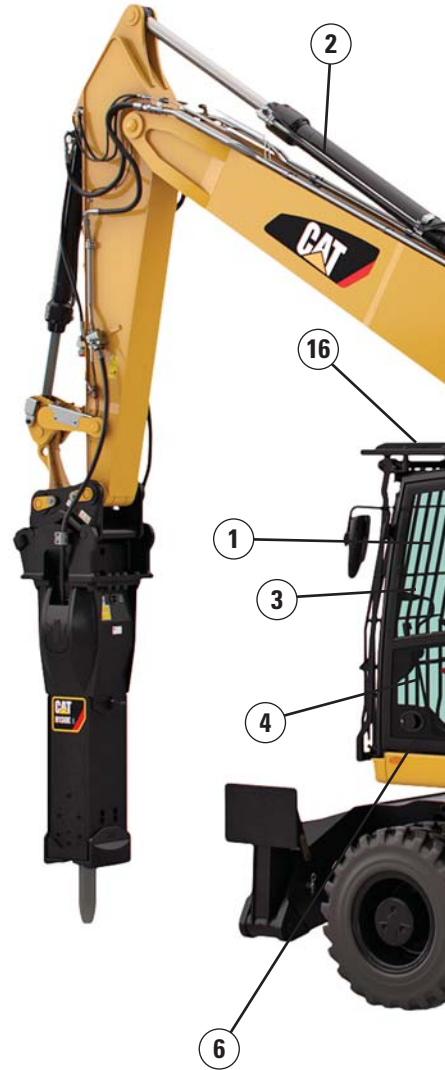
Embedded Features

Smart devices are embedded to offer as much safety as possible for your operators and help enforce safe behavior:

- Safety seat belt and warning indicators (monitor)
- Automatic swing lock
- Automatic brake and axle lock
- Safety lever, preventing exit when the implements are not locked out
- Emergency shut off switch and battery disconnect switch
- Adjustable travel alarm
- Lowering check valves

Safe and Quiet Cab

The all-new cab provides you with a safe environment. It also contributes to your comfort with limited vibrations and drastically reduced sound levels.



Cab Ingress. We bring a solution to allow you to safely climb into the cab:

- Three longer access steps, aligned with the cab entry
- Anti-skid plates on all walkways and steps reducing slipping hazards
- Convenient door handrail
- Additional extended handrail, from the top to the bottom of the cab
- Tiltible console, not to obstruct entry into the cab
- Safety lever built into the tiltible console to make sure the way in and out is free of obstacle



- 1) Laminated windshield and skylight window. One-piece 10 mm windshield, fulfilling EN356 P5A standards.
- 2) Lowering check valves
- 3) Safety seat belt indicator
- 4) Safety lever
- 5) Emergency shut-off switch
- 6) Automatic brake and axle lock
- 7) Punched, anti-slippery walking surfaces
- 8) Battery disconnect switch
- 9) Swing and implement electronic lock
- 10) Adjustable travel alarm
- 11) All doors equipped with gas spring cylinders
- 12) Emergency hammer and exit
- 13) ROPS certified cab
- 14) Sound proofing
- 15) Beacon available
- 16) FOPS and top/front guards

Smart Lighting

- LED lights for all working lights for enhanced night-time visibility
- Halogen lights for front roading lights
- LED dome light for better illumination inside the cab

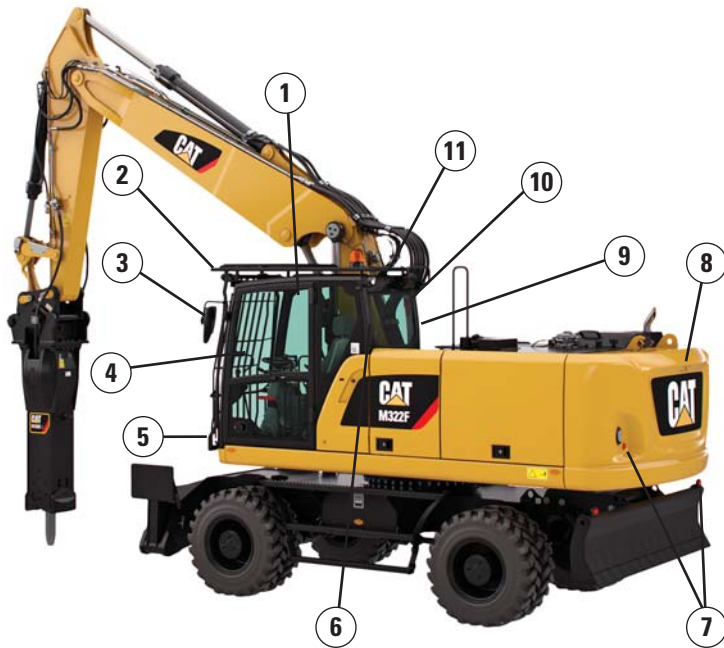


Great Views

- Enlarged glass gives you excellent visibility to the front, top, rear, and sides, even to the right
- Standard rearview camera gives you a clear field of view behind the machine through the monitor. Camera is integrated into the counterweight.
- Standard sideview camera, to check nothing is hidden to you from the front right hand side to the rear of the machine
- Lenses of all the cameras are wide angle and heated
- All mirrors are wide angle and allow view not only around the machine but also to the ground

Unmatched Visibility

Make Sure Nothing Is Hidden to You



Visibility all around is critical, especially for machines which go on public roads.

- 1) Increased skylight and windshield glass area
- 2) Improved lighting with standard LED lights for all working lights
- 3) Optional heated mirrors
- 4) Great left hand side visibility with the new all glass door
- 5) Halogen front roading lights
- 6) Wide rear window
- 7) Reflecting red lights on rear and blade/outriggers
- 8) Standard wide rearview camera
- 9) Standard side camera and dedicated wide monitor
- 10) Large right hand side window
- 11) Mirrors, wide angle, with additional lower mirror for ground visibility

Complete Customer Care

Your Cat Dealer Will Support You Like No Other

Support You Can Count On

From helping you to choose the right machine to knowledgeable on-going support, Cat dealers provide the best-in-sales and services.

- **Best long-term investment** with financing options and services
- **Productive operation** with training programs
- **Preventive maintenance** and guaranteed maintenance contracts
- **Uptime**, with best-in-class parts availability
- **Repair, rebuild, or replace?** Your dealer can help evaluate the best option.



M322F Wheeled Excavator Specifications

Engine

Engine Model	Cat C7.1 ACERT ⁽¹⁾
Ratings	1,700 rpm
Engine Gross Power (maximum)	
ISO 14396	128.9 kW (173 hp)
ISO 14396 (metric)	175 hp (PS)
Net Power (rated) ⁽²⁾	
ISO 9249/SAE J1349	126 kW (169 hp)
ISO 9249/SAE J1349 (metric)	171 hp (PS)
80/1269/EEC	126 kW (169 hp)
Net Power (maximum)	
ISO 9249/SAE J1349	126 kW (169 hp)
ISO 9249/SAE J1349 (metric)	171 hp (PS)
80/1269/EEC	126 kW (169 hp)
Bore	105 mm
Stroke	135 mm
Displacement	7.01 L
Maximum Torque at 1,400 rpm	830 N·m
Number of Cylinders	6

⁽¹⁾ Meets Stage IV emission standards.

⁽²⁾ Rated speed 1,700 rpm. Constant power from 1,500-1,700 rpm.

- Net power advertised is the power available at the flywheel when engine is equipped with air cleaner, CEM exhaust gas aftertreatment, alternator, and cooling fan running at intermediate speed.
- No deratings required up to 3000 m altitude. Automatic derating occurs after 3000 m.

Transmission

Forward/Reverse	
1st Gear	9 km/h
2nd Gear	30 km/h
Creeper Speed	
1st Gear	3 km/h
2nd Gear	9 km/h
Drawbar Pull	127 kN
Maximum Gradeability (at 25 000 kg)	70%

Swing Mechanism

Swing Speed	9 rpm
Swing Torque	53 kN·m

Undercarriage

Ground Clearance	360 mm
Maximum Steering Angle	35°
Oscillation Axle Angle	±8.5°
Minimum Turning Radius	
Outside of Tire	6800 mm
End of One-Piece Boom	9300 mm
End of VA Boom	7800 mm

Service Refill Capacities

Fuel Tank (total capacity)	420 L
Diesel Exhaust Fluid Tank	34.5 L
Cooling System	46.9 L
Engine Crankcase	18.5 L
Rear Axle Housing (differential)	14 L
Front Steering Axle (differential)	11 L
Final Drive	2.5 L
Powershift Transmission	2.5 L

Weights

Operating Weights*	20 800-22 330 kg
Weights	
VA Boom	
Rear Dozer Only	20 800 kg
Rear Dozer, Front Outriggers	22 100 kg
Front and Rear Outriggers	22 330 kg
One-Piece Boom	
Rear Dozer, Front Outriggers	21 490 kg
Front and Rear Outriggers	21 720 kg
Sticks**	
Medium (2500 mm)	1005 kg
Long (2900 mm)	1085 kg
Counterweight	
Standard	3500 kg
Optional	4700 kg

*Operating weight includes medium stick, 3500 kg counterweight, full fuel tank, operator, quick coupler (240 kg) bucket (780 kg) and dual pneumatic tires. Weight varies depending on configuration.

**Includes cylinder, bucket linkage, pins and standard hydraulic lines.

M322F Wheeled Excavator Specifications

Hydraulic System

Tank Capacity	200 L
System	405 L
Maximum Pressure	
Implement Circuit	
Normal	350 bar
Heavy Lift	375 bar
Travel Circuit	350 bar
Auxiliary Circuit	
High Pressure	350 bar
Medium Pressure	185 bar
Swing Mechanism	310 bar
Maximum Flow	
Implement/Travel Circuit	357 L/min
Auxiliary Circuit	
High Pressure	250 L/min
Medium Pressure (Eco Mode)	43 L/min
Medium Pressure (Power Mode)	50 L/min
Swing Mechanism	118 L/min

Tires

Standard	11.00-20 (Dual Pneumatic)
Optional	10.00-20 (Dual Solid Rubber)

Blade

Blade Type	Parallel
Blade Roll-Over Height	576 mm
Width	2750 mm

Sustainability

Engine Emissions	Stage IV
Fluids (Optional)	
Cat Bio HYDO Advanced	Readily biodegradable EU Flower eco-label certified
Biodiesel Up to B20	Meets EN 14214 or ASTM D6751 with EN590 or ASTM D975 Standard Mineral diesel fuels
Diesel Exhaust Fluid	Must meet ISO 22241
Vibration Levels	
Maximum Hand/Arm	
ISO 5349:2001	<2.5 m/s ²
Maximum Whole Body	
ISO/TR 25398:2006	<0.5 m/s ²
Seat Transmissibility Factor	
ISO 7096:2000-spectral class EM5	<0.7

Standards

ROPS	ROPS (Rollover Protective Structure) offered by Caterpillar meets ROPS criteria ISO 12117-2:2008
Operator Protective Structure: top/front guards	FOPS (Falling Object Protective Structure) meets FOPS criteria ISO 10262:1998 and SAE J1356:2008
Cab/Sound Levels	Meets appropriate standards as listed below

Sound Performance

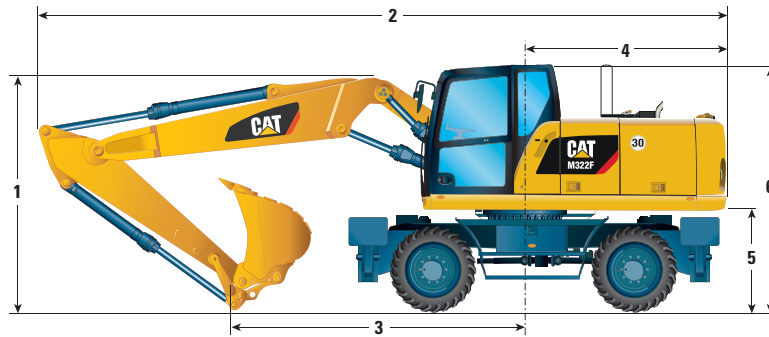
Operator Sound	
2000/14/EC	71 dB(A)
Spectator Sound	
2000/14/EC	100 dB(A)

- Operator Sound – The operator sound level is measured according to the procedures specified in 2000/14/EC, for a cab offered by Caterpillar, when properly installed and maintained and tested with the door and windows closed.
- Exterior Sound – The labeled spectator sound power level is measured according to the test procedures and conditions specified in 2000/14/EC.
- Hearing protection may be needed when operating with an open operator station and cab (when not properly maintained for doors/windows open) for extended periods or in noisy environment(s).

M322F Wheeled Excavator Specifications

Dimensions

Standard undercarriage with 2 sets of outriggers and dual 11.00-20 pneumatic tires. All dimensions are approximate.



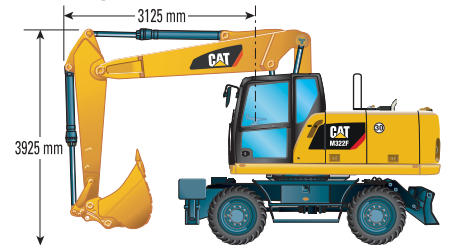
		Variable Adjustable Boom		One-Piece Boom	
		2500	2900	2500	2900
Stick Length	mm	2500	2900	2500	2900
1 Shipping Height with Falling Object Guard and Handrails Lowered (highest point between boom and cab)	mm	3320	3320	3320	3320
2 Shipping Length	mm	9555	9540	9710	9720
3 Support Point	mm	3755	3525	3720	3445
4 Tail Swing Radius	mm	2825			
5 Counterweight Clearance	mm	1310			
6 Cab Height – No Falling Object Guard, Handrails Lowered	mm	3215			
No Falling Object Guard, Handrails not Lowered	mm	3290			
With Falling Object Guard	mm	3320			
7 Overall Machine Width					
Width with Outriggers on Ground	mm	3930		3930	
Width with Outriggers Up	mm	2750		2750	
Width with Blade	mm	2750		2750	



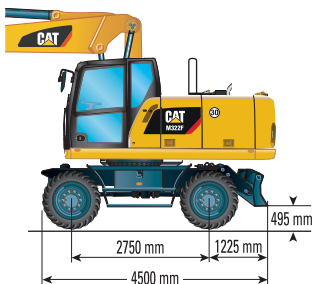
**Maximum tire clearance with outrigger fully down



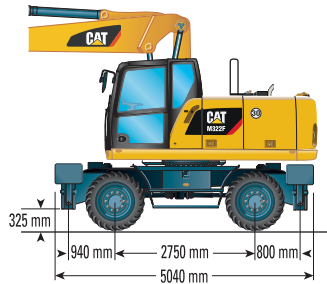
Roading position with 2500 mm stick



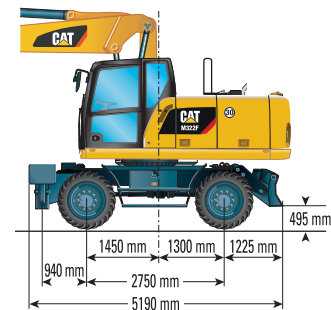
Undercarriage with dozer only



Undercarriage with 2 sets of outriggers

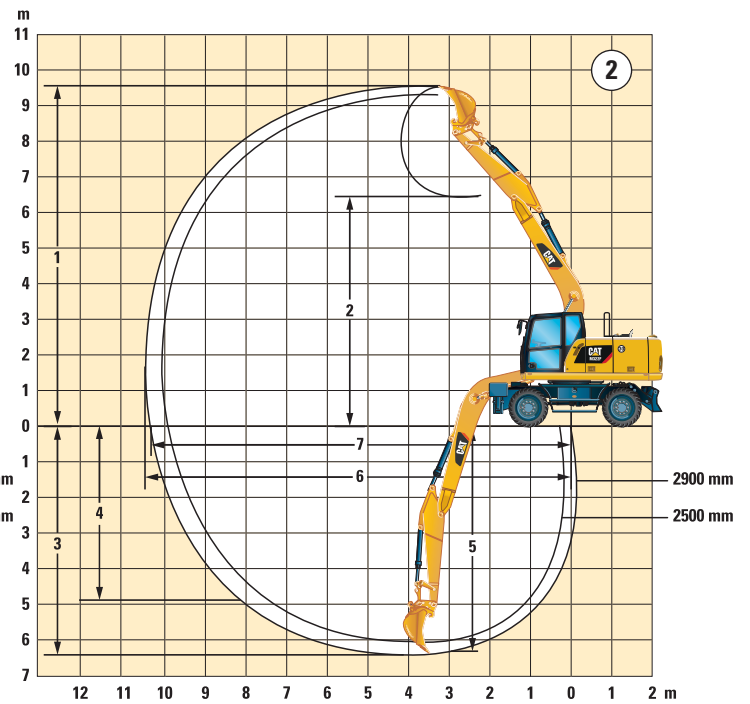
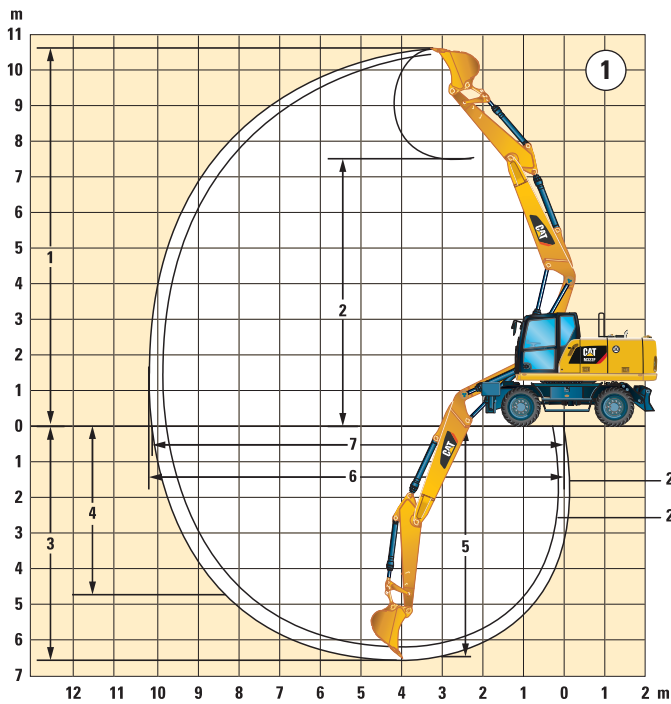


Undercarriage with 1 set of outriggers and dozer



M322F Wheeled Excavator Specifications

Working Ranges



		①		②	
		Variable Adjustable Boom		One-Piece Boom	
Stick Length	mm	2500	2900	2500	2900
1 Digging Height	mm	10 540	10 850	9370	9590
2 Dump Height	mm	7220	7530	6250	6470
3 Digging Depth	mm	6250	6650	6050	6450
4 Vertical Wall Digging Depth	mm	4430	4790	4600	4970
5 Depth 2.5 m in Straight Clean-Up	mm	6150	6560	5850	6270
6 Reach	mm	9970	10 360	10 080	10 460
7 Reach at Ground Level	mm	9800	10 190	9910	10 300
Bucket Forces (ISO 6015)	kN	152	152	152	152
Stick Forces (ISO 6015)	kN	117	106	117	106

Working range dimensions with pneumatic tires.

Range values are calculated with GD Bucket 1200 mm, 1.19 m³ with tips K80 and CW-30 with a tip radius of 1688 mm.

Breakout force values are calculated with heavy lift on (no quick coupler) and at cutting edge radius of 1386 mm.

M322F Wheeled Excavator Specifications

Bucket Specifications and Compatibility

Contact your Cat dealer for special bucket requirements.

				Variable Adjustable Boom								One-Piece Boom										
Stick Length				2500 mm				2900 mm				2500 mm				2900 mm						
	Width	Weight*	Capacity (ISO)	Adapters: K80	Free on wheels	Front dozer lowered	Front dozer and rear outriggers	Fully stabilized	Free on wheels	Front dozer lowered	Front dozer and rear outriggers	Fully stabilized	Free on wheels	Front dozer lowered	Front dozer and rear outriggers	Fully stabilized	Free on wheels	Front dozer lowered	Front dozer and rear outriggers	Fully stabilized		
Pin-On Buckets				With 3.5 mt Counterweight																		
Cat General Duty	750	604	0.64		Not recommended	Not recommended	Not recommended	Not recommended	Not recommended	Not recommended	Not recommended	Not recommended	Not recommended	Not recommended	Not recommended	Not recommended	Not recommended	Not recommended	Not recommended	Not recommended	Not recommended	
	1200	768	1.19		Not recommended	Not recommended	Not recommended	Not recommended	Not recommended	Not recommended	Not recommended	Not recommended	Not recommended	Not recommended	Not recommended	Not recommended	Not recommended	Not recommended	Not recommended	Not recommended	Not recommended	
	1300	774	1.30		Not recommended	Not recommended	Not recommended	Not recommended	Not recommended	Not recommended	Not recommended	Not recommended	Not recommended	Not recommended	Not recommended	Not recommended	Not recommended	Not recommended	Not recommended	Not recommended	Not recommended	
	1400	808	1.43		Not recommended	Not recommended	Not recommended	Not recommended	Not recommended	Not recommended	Not recommended	Not recommended	Not recommended	Not recommended	Not recommended	Not recommended	Not recommended	Not recommended	Not recommended	Not recommended	Not recommended	
Heavy Duty	900	626	0.70		Not recommended	Not recommended	Not recommended	Not recommended	Not recommended	Not recommended	Not recommended	Not recommended	Not recommended	Not recommended	Not recommended	Not recommended	Not recommended	Not recommended	Not recommended	Not recommended	Not recommended	
Ditch Cleaning	1300	928	1.30		Not recommended	Not recommended	Not recommended	Not recommended	Not recommended	Not recommended	Not recommended	Not recommended	Not recommended	Not recommended	Not recommended	Not recommended	Not recommended	Not recommended	Not recommended	Not recommended	Not recommended	
				With 4.7 mt Counterweight																		
Cat General Duty	750	604	0.66		Not recommended	Not recommended	Not recommended	Not recommended	Not recommended	Not recommended	Not recommended	Not recommended	Not recommended	Not recommended	Not recommended	Not recommended	Not recommended	Not recommended	Not recommended	Not recommended	Not recommended	
	1200	768	1.19		Not recommended	Not recommended	Not recommended	Not recommended	Not recommended	Not recommended	Not recommended	Not recommended	Not recommended	Not recommended	Not recommended	Not recommended	Not recommended	Not recommended	Not recommended	Not recommended	Not recommended	
	1300	774	1.30		Not recommended	Not recommended	Not recommended	Not recommended	Not recommended	Not recommended	Not recommended	Not recommended	Not recommended	Not recommended	Not recommended	Not recommended	Not recommended	Not recommended	Not recommended	Not recommended	Not recommended	
	1400	808	1.43		Not recommended	Not recommended	Not recommended	Not recommended	Not recommended	Not recommended	Not recommended	Not recommended	Not recommended	Not recommended	Not recommended	Not recommended	Not recommended	Not recommended	Not recommended	Not recommended	Not recommended	
Heavy Duty	900	626	0.70		Not recommended	Not recommended	Not recommended	Not recommended	Not recommended	Not recommended	Not recommended	Not recommended	Not recommended	Not recommended	Not recommended	Not recommended	Not recommended	Not recommended	Not recommended	Not recommended	Not recommended	
Ditch Cleaning	1300	928	1.30		Not recommended	Not recommended	Not recommended	Not recommended	Not recommended	Not recommended	Not recommended	Not recommended	Not recommended	Not recommended	Not recommended	Not recommended	Not recommended	Not recommended	Not recommended	Not recommended	Not recommended	
With Quick Coupler (CW-30/CW-30s)				With 3.5 mt Counterweight																		
Cat General Duty	750	571	0.64		Not recommended	Not recommended	Not recommended	Not recommended	Not recommended	Not recommended	Not recommended	Not recommended	Not recommended	Not recommended	Not recommended	Not recommended	Not recommended	Not recommended	Not recommended	Not recommended	Not recommended	
	900	632	0.81		Not recommended	Not recommended	Not recommended	Not recommended	Not recommended	Not recommended	Not recommended	Not recommended	Not recommended	Not recommended	Not recommended	Not recommended	Not recommended	Not recommended	Not recommended	Not recommended	Not recommended	
	1200	741	1.19		Not recommended	Not recommended	Not recommended	Not recommended	Not recommended	Not recommended	Not recommended	Not recommended	Not recommended	Not recommended	Not recommended	Not recommended	Not recommended	Not recommended	Not recommended	Not recommended	Not recommended	
	1300	771	1.30		Not recommended	Not recommended	Not recommended	Not recommended	Not recommended	Not recommended	Not recommended	Not recommended	Not recommended	Not recommended	Not recommended	Not recommended	Not recommended	Not recommended	Not recommended	Not recommended	Not recommended	
	1400	808	1.43		Not recommended	Not recommended	Not recommended	Not recommended	Not recommended	Not recommended	Not recommended	Not recommended	Not recommended	Not recommended	Not recommended	Not recommended	Not recommended	Not recommended	Not recommended	Not recommended	Not recommended	
Heavy Duty	1300	859	1.30		Not recommended	Not recommended	Not recommended	Not recommended	Not recommended	Not recommended	Not recommended	Not recommended	Not recommended	Not recommended	Not recommended	Not recommended	Not recommended	Not recommended	Not recommended	Not recommended	Not recommended	
				With 4.7 mt Counterweight																		
Cat General Duty	750	571	0.64		Not recommended	Not recommended	Not recommended	Not recommended	Not recommended	Not recommended	Not recommended	Not recommended	Not recommended	Not recommended	Not recommended	Not recommended	Not recommended	Not recommended	Not recommended	Not recommended	Not recommended	
	900	632	0.81		Not recommended	Not recommended	Not recommended	Not recommended	Not recommended	Not recommended	Not recommended	Not recommended	Not recommended	Not recommended	Not recommended	Not recommended	Not recommended	Not recommended	Not recommended	Not recommended	Not recommended	
	1200	741	1.19		Not recommended	Not recommended	Not recommended	Not recommended	Not recommended	Not recommended	Not recommended	Not recommended	Not recommended	Not recommended	Not recommended	Not recommended	Not recommended	Not recommended	Not recommended	Not recommended	Not recommended	
	1300	771	1.30		Not recommended	Not recommended	Not recommended	Not recommended	Not recommended	Not recommended	Not recommended	Not recommended	Not recommended	Not recommended	Not recommended	Not recommended	Not recommended	Not recommended	Not recommended	Not recommended	Not recommended	
	1400	808	1.43		Not recommended	Not recommended	Not recommended	Not recommended	Not recommended	Not recommended	Not recommended	Not recommended	Not recommended	Not recommended	Not recommended	Not recommended	Not recommended	Not recommended	Not recommended	Not recommended	Not recommended	
Heavy Duty	1300	859	1.30		Not recommended	Not recommended	Not recommended	Not recommended	Not recommended	Not recommended	Not recommended	Not recommended	Not recommended	Not recommended	Not recommended	Not recommended	Not recommended	Not recommended	Not recommended	Not recommended	Not recommended	
Ditch Cleaning	From 1800 to 2200 mm/ 1.22 to 1.76 m ³ (793-878 kg)				Two piece bolt-on cutting edge or profile edge DC buckets are available. Consult your Cat dealer for proper match.																	

The above loads are in compliance with hydraulic excavator standard EN474, they do not exceed 87% of hydraulic lifting capacity or 75% of tipping capacity with front linkage fully extended at ground line with bucket curled.

Capacity based on ISO 7451.

Bucket weight with Cat General Duty tips.

- Maximum material density 2100 kg/m³
- Maximum material density 1800 kg/m³
- Maximum material density 1500 kg/m³
- Maximum material density 1200 kg/m³
- Not recommended

Caterpillar recommends using appropriate attachments to maximize the value customers receive from our products. Use of attachments, including buckets, which are outside of Caterpillar's recommendations or specifications for weight, dimensions, flows, pressures, etc. may result in less-than-optimal performance, including but not limited to reductions in production, stability, reliability, and component durability. Improper use of an attachment resulting in sweeping, prying, twisting and/or catching of heavy loads will reduce the life of the boom and stick.

M322F Wheeled Excavator Specifications

Attachments Matching Guide

When choosing between various attachments that can be installed onto the same machine configuration, consider attachment application, productivity requirements, and durability. Refer to attachment specifications for application recommendations and productivity information.

		One-Piece Boom											
		3.5 mt						4.7 mt					
		(1)		(2)		(3)		(1)		(2)		(3)	
Counterweight		2500 mm	2900 mm	2500 mm	2900 mm	2500 mm	2900 mm	2500 mm	2900 mm	2500 mm	2900 mm	2500 mm	2900 mm
Stick Length		2500 mm	2900 mm	2500 mm	2900 mm	2500 mm	2900 mm	2500 mm	2900 mm	2500 mm	2900 mm	2500 mm	2900 mm
Hydraulic Hammer	H115Es	C	C	C	C	C	C	C	C	C	C	C	C
	H120Es	C	C	C	C	C	C	C	C	C	C	C	C
	H130Es			C	C	C	C	C	C	C	C	C	C
Multi-Processor	MP318 CC Jaw			C	C	C	C	C	C	C	C	C	C
	MP318 D Jaw			C	C	C	C	C	C	C	C	C	C
	MP318 P Jaw			C	C	C	C	C	C	C	C	C	C
	MP318 U Jaw			C	C	C	C	C	C	C	C	C	C
	MP318 S Jaw			C	C	C	C	C	C	C	C	C	C
Crusher	P315			C	C	C	C	C	C	C	C	C	C
Pulverizer	P215			C	C	C	C	C	C	C	C	C	C
Demolition and Sorting Grapple (D-Demolition shells, R-Recycling shells, Fixed CAN-fixed hingeplates for CW coupler usage)	G315B-D/R			C	C	C	C	C	C	C	C	C	C
	G315B-D/R Fixed CAN			C	C	C	C	C	C	C	C	C	C
	G315B WH			C	C	C	C	C	C	C	C	C	C
Scrap and Demolition Shear	S320B			C	C	C	C	C	C	C	C	C	C
	S325B			C	C	C	C	C	C	C	C	C	C
	S340B			C	C	C	C	C	C	C	C	C	C
Compactor Plate	CVP110	C	C	C	C	C	C	C	C	C	C	C	C
		Variable Adjustable Boom											
Hydraulic Hammer	H115Es	C	C	C	C	C	C	C	C	C	C	C	C
	H120Es	C	C	C	C	C	C	C	C	C	C	C	C
	H130Es			C	C	C	C	C	C	C	C	C	C
Multi-Processor	MP318 CC Jaw			C	C	C	C	C	C	C	C	C	C
	MP318 D Jaw			C	C	C	C	C	C	C	C	C	C
	MP318 P Jaw			C	C	C	C	C	C	C	C	C	C
	MP318 U Jaw			C	C	C	C	C	C	C	C	C	C
	MP318 S Jaw			C	C	C	C	C	C	C	C	C	C
Crusher	P315			C	C	C	C	C	C	C	C	C	C
Pulverizer	P215			C	C	C	C	C	C	C	C	C	C
Demolition and Sorting Grapple (D-Demolition shells, R-Recycling shells, Fixed CAN-fixed hingeplates for CW coupler usage)	G315B-D/R			C	C	C	C	C	C	C	C	C	C
	G315B-D/R Fixed CAN			C	C	C	C	C	C	C	C	C	C
	G315B WH			C	C	C	C	C	C	C	C	C	C
Scrap and Demolition Shear	S320B			C	C	C	C	C	C	C	C	C	C
	S325B			C	C	C	C	C	C	C	C	C	C
	S340B			C	C	C	C	C	C	C	C	C	C
Compactor Plate	CVP110	C	C	C	C	C	C	C	C	C	C	C	C
Orange Peel Grapple (4 or 5 Tines)	GSH15B 400L, 500L, 600L, 800L	These attachments are available for the M322F. Consult your Cat dealer for proper match.											
Clamshell Grapple	CTV15 1000L, 1200L, 1500L, 1700L												
Pin Grabber Coupler	Cat-PG												
Dedicated Coupler	Cat CW-30/CW-30S/CWAC-30 (autoconnect)												

- (1) Dozer lowered
- (2) 2 sets outriggers lowered
- (3) Dozer and outrigger lowered

- Pin-on, Cat Pin Grabber and dedicated coupler
- Pin-on only
- Pin-on or dedicated coupler
- Over the front only
- C Compatible with CWAC

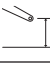


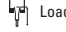


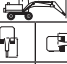















- Over the front only with dedicated coupler (match pin-on and CW)
- Over the front only with Cat Pin Grabber coupler (match pin-on, CW coupler and Cat-PG)
- Boom mount
- Not recommended

Offerings not available in all areas. Matches are dependent on Wheeled Excavator configurations. Consult your Cat dealer to determine what is offered in your area and for proper attachment match.

M322F Wheeled Excavator Specifications

Lift Capacities – Variable Adjustable Boom

All values are in kg, bucket cylinder and bucket linkage installed, attachment: none, with counterweight (3500 kg), heavy lift on.

Medium Stick 2500 mm	 Undercarriage configuration	 Load at maximum reach (stick nose/bucket pin)			 Load over front			 Load over rear			 Load over side			 Load point height			mm
		3000 mm			4500 mm			6000 mm			7500 mm						
																	
7500 mm	Lower (std. UC) rear dozer up														*3850	*3850	3750
	Lower (std. UC) rear dozer down														*3850	*3850	*3850
	Lower (std. UC) f. stabilizer & r. dozer down														*3850	*3850	*3850
	Lower (std. UC) 2 sets of stabilizers down														*3850	*3850	*3850
6000 mm	Lower (std. UC) rear dozer up														*3350	3200	2700
	Lower (std. UC) rear dozer down														*3350	*3350	3000
	Lower (std. UC) f. stabilizer & r. dozer down														*3350	*3350	*3350
	Lower (std. UC) 2 sets of stabilizers down														*3350	*3350	*3350
4500 mm	Lower (std. UC) rear dozer up																
	Lower (std. UC) rear dozer down																
	Lower (std. UC) f. stabilizer & r. dozer down																
	Lower (std. UC) 2 sets of stabilizers down																
3000 mm	Lower (std. UC) rear dozer up																
	Lower (std. UC) rear dozer down																
	Lower (std. UC) f. stabilizer & r. dozer down																
	Lower (std. UC) 2 sets of stabilizers down																
1500 mm	Lower (std. UC) rear dozer up																
	Lower (std. UC) rear dozer down																
	Lower (std. UC) f. stabilizer & r. dozer down																
	Lower (std. UC) 2 sets of stabilizers down																
0 mm	Lower (std. UC) rear dozer up																
	Lower (std. UC) rear dozer down																
	Lower (std. UC) f. stabilizer & r. dozer down																
	Lower (std. UC) 2 sets of stabilizers down																
-1500 mm	Lower (std. UC) rear dozer up																
	Lower (std. UC) rear dozer down																
	Lower (std. UC) f. stabilizer & r. dozer down																
	Lower (std. UC) 2 sets of stabilizers down																
-3000 mm	Lower (std. UC) rear dozer up																
	Lower (std. UC) rear dozer down																
	Lower (std. UC) f. stabilizer & r. dozer down																
	Lower (std. UC) 2 sets of stabilizers down																

*Limited by hydraulic rather than tipping load.

Lift capacity ratings are based on ISO 10567:2007, they do not exceed 87% of hydraulic lifting capacity or 75% of tipping load. The load point is the center line of the bucket pivot mounting pin on the stick. The oscillating axle must be locked. Lifting capacities are based on the machine standing on a firm uniform supporting surface and the Variable Boom Cylinder adjusted to the maximum length. For lifting capacity including bucket and/or quick coupler, the respective weight has to be subtracted from above values. The use of a work tool attachment point to handle/lift objects, could affect the machine lift performance.

Always refer to the appropriate Operation and Maintenance Manual for specific product information.

Standard Equipment

Standard equipment may vary. Consult your Cat dealer for details.

ELECTRICAL

- Alternator, 115A
- Lighting
 - LED light package, including all working lights (compatible with falling object guard). Working lights include cab mounted lights (two front, one rear and one on the counterweight for the rear camera)
 - Boom working light
 - Cab interior LED light
 - Rooding lights two front, halogen
 - Rooding lights two rear, LED modules
- Main shut-off switch
- Maintenance free batteries, heavy duty
- Signal/warning horn
- Electrical refueling pump

ENGINE

- Cat C7.1 engine with ACERT Technology Stage IV compliant
- Aftertreatment technologies including the Cat Clean Emission Module (Cat CEM) package
- Automatic Engine Speed Control (AESC), including one touch low idle
- Engine Idle Shutdown (EIS)
- Power mode selector
- Altitude 3000 m
- Automatic starting aid
- Fuel/water separator with water in fuel switch
- Electric fuel priming pump

HYDRAULICS

- Adjustable hydraulic sensitivity
- Auxiliary boom and stick lines
- All Cat XT™-6 ES hoses
- Anti-drift valves for bucket and tool control/multi-function circuits

- Basic control circuits:
 - Medium pressure
 - Two-way, medium pressure circuit, for rotating or tilting of attachments
 - Tool control/multi function
 - One/two-way high pressure for hammer application or opening and closing of an attachment
 - Programmable flow and pressure for up to 10 attachments – selection via monitor
 - Quick coupler circuit and lines for hydraulic quick coupler – compatible with the Cat Pin Grabber Quick Coupler
- Boom Lowering Check Valve (BLCV), including overload warning device
- Heavy lift mode
- Load-sensing hydraulic system
- Electric Pump Control (EPC)
- Separate swing pump
- Stick Lowering Check Device (SLCV)
- Stick regeneration circuit

OPERATOR STATION

- ROPS cab structure compliant with 2006/42/EC and tested according to ISO 12117-2:2008
- Adjustable armrests
- Air conditioner, heater and defroster with automatic climate control
- Cigarette lighter (24 volt)
- Beverage cup/can holder
- Bolt-on Falling Object Guards (FOGS) capability
- Bottle holder
- Bottom mounted intermittent (four speeds) wiping system that covers the upper and lower windshield glass
- Cameras
 - Rear mounted wide angle camera (integrated into the counterweight) display through the cab monitor
 - Right side wide angle camera, mounted on the cooling hood, displayed on a dedicated large color monitor

- Coat hook
 - Cruise Control System
 - Fastened seat belt warning signal
 - Floor mat, washable, with storage compartment
 - FM Radio with CD player, speakers and USB port
 - Fully adjustable suspension seat
 - Instrument panel and gauges
 - Information and warning messages in local language
 - Gauges for fuel level, engine coolant, Diesel Exhaust Fluid (DEF) and hydraulic oil temperature
 - Filters/fluids change intervals
 - Indicators for headlights, turning signal, low fuel, engine dial setting
 - Clock with 10-day backup battery
 - Interior LED lighting with door switch
 - Joystick pilot operated
 - Laminated upper front windshield
 - Left side console, tiltable, with lock out for all controls
 - Literature holder in right hand side panel
 - Mobile phone holder
 - Parking brake
 - Pin-code, engine start prevention
 - Power supply, 12V-10A
 - Rain protector*
 - Rear window (tempered glass)/emergency exit, with hammer
 - Retractable seat belt, integrated into the seat
 - Safety lever, integrated into the left console
 - Sealed cab with positive filtered ventilation
 - Skylight, laminated glass
 - Sliding door windows
 - Steering column, adjustable height and angle
 - Storage area suitable for a lunch box
 - Sunshade for windshield and skylight
- *Not compatible with the falling objects guards

Continued on next page

M322F Wheeled Excavator Standard Equipment

Standard Equipment

Standard equipment may vary. Consult your Cat dealer for details.

UNDERCARRIAGE

- All wheel drive
- Automatic brake/axle lock
- Creeper speed
- Electronic swing and travel lock
- Heavy-duty axles, advanced disc brake system and travel motor, adjustable braking force
- Oscillating front axle, lockable, with remote greasing point

- Tires, 11.00-20 16 PR, dual
- Spacer rings for tires
- Steps with toolbox in undercarriage (left and right)
- Two-piece drive shaft, extended maintenance intervals (1,000 hours)
- Two speed hydrostatic transmission

OTHER EQUIPMENT

- Auto-lube, centralized greasing (implement and swing gear)
- Automatic swing brake
- Bucket linkage with diverter valve
- Counterweight, 3500 kg
- Engine emergency shutoff switch
- Mirrors, wide angle, frame and cab
- Product Link
- S·O·SSM sampling valves for engine oil, hydraulic oil and coolant

Optional Equipment

Optional equipment may vary. Consult your Cat dealer for details.

AUXILIARY CONTROLS AND LINES

- Basic control circuits:
 - Second high pressure
 - Additional two-way, high pressure circuit, for tools requiring a second high or medium pressure function
- SmartBoom

HYDRAULICS

- Cat BIO HYDO Advanced HEES biodegradable hydraulic oil

FRONT LINKAGE

- Booms
 - One-piece boom, 5650 mm
 - VA boom (two piece), 5490 mm
- Sticks
 - 2500 mm
 - 2900 mm

ELECTRICAL

- Travel alarm with three selectable modes
- Rotating beacon on cab

OPERATOR STATION

- Joystick steering
- Seat, adjustable high-back, with vertical and horizontal air-suspension and head rest
 - comfort, automatic weight adjustment, mechanical lumbar support, heated
 - the deluxe seat adds automatic height and weight adjustment, pneumatic lumbar support, premium fabric, heated and cooled
- Windshield
 - One-piece high impact resistant (EN 356 P5A standards, 10 mm)
 - 70/30 split, openable
- Mirrors heated, frame and cab
- High pressure pedal
- Joystick pattern, changeable
- Falling Object Guards (top and front)

UNDERCARRIAGE

- Rear blade* only
- Front blade*/rear outriggers
- Front outriggers/rear blade*
- Front and rear outriggers
- Travel restraint, for roading with a clamshell

OTHER EQUIPMENT

- Cat Machine Security System (MSS)
- Cooling protection package for dusty applications (includes fine mesh for enhanced radiator protection and engine air precleaner)
- Counterweight, 4700 kg
- Ride Control
- Tires (see pg. 22)
- Attachments (see pg. 25-26)

*Parallel blade 2.75 m

For more complete information on Cat products, dealer services, and industry solutions, visit us on the web at www.cat.com

AEHQ7769 (01-2016)
(Europe)

© 2016 Caterpillar
All rights reserved

Materials and specifications are subject to change without notice. Featured machines in photos may include additional equipment. See your Cat dealer for available options.

CAT, CATERPILLAR, SAFETY.CAT.COM, their respective logos, "Caterpillar Yellow" and the "Power Edge" trade dress, as well as corporate and product identity used herein, are trademarks of Caterpillar and may not be used without permission.

VisionLink is a trademark of Trimble Navigation Limited, registered in the United States and in other countries.

