

MINI EXCAVATORS UPGRADE KITS

ENHANCED OPTIONS FOR
IMPROVED COMFORT,
SAFETY AND PRODUCTIVITY



Teknoxgroup



TEKNOXGROUP AS A PART OF TESYA



The TESA Group is an international family of 25 companies with the same strong values and local roots in 15 countries. From construction equipment, cogeneration plants and warehousing equipment to marine propulsion and on-road logistics, our companies conceive, sell, rent and manage advanced custom solutions, benefiting from a shared vision and robust synergies.

Teknoxgroup is the exclusive dealer of Caterpillar. As part of TESA, Teknoxgroup covers the area of Slovenia, Croatia, Bosnia and Herzegovina, Serbia, Montenegro, North Macedonia, Kosovo and Albania, where we sell new and used CAT construction machinery, engines and gensets, and through service and distribution of spare parts, we offer the customers all technical support needed. Teknoxgroup develops its own solutions with high added value for the customer.

YEARS
90

EMPLOYEES
>3.500

MOBILE WORKSHOPS
1.000

TECHNICIANS
>1.100

BRANCHES
>120

IN **15**
COUNTRIES

Teknoxgroup 
A TESYA COMPANY

IGT 
A TESYA COMPANY

IGTE 
A TESYA COMPANY

IGT Trucks 
A TESYA COMPANY

STET 
A TESYA COMPANY

Finanzauto 
A TESYA COMPANY

cls 
A TESYA COMPANY

THE GENERATION OF EXCELLENCE

TO DO YOUR BEST WORK, YOU NEED A COMFORTABLE MACHINE YOU CAN RELY ON. THE NEXT GENERATION MINI EXCAVATORS WERE DESIGNED WITH YOU IN MIND.

The high-performance machines are not only affordable but they boast improved servicing, comfort and control.



COMFORT AND CONTROL

Putting the control in your hands, joystick and cruise control make manoeuvring, positioning and travelling in your excavator easier and faster. You can choose to start the machine with the push of a button thanks to an optional Bluetooth-enabled key.

AFFORDABLE

The Next Generation Mini Excavators offer lower ownership and operator costs. Now you can spend less time and money on servicing, repairs and fuel. The all-steel design is durable and parts are competitively priced, making this new range an investment in both quality and efficiency.

HIGH PERFORMANCE

Multifunctional and versatile, the new mini excavator models are best in their class for productivity and performance.

You can customise the operator settings to suit the task in hand with adjustable hydraulics and speed settings. The Next Generation models deliver up to 20% more performance without compromising your fuel efficiency.

NO-HASSLE SERVICING

Servicing and repair are easy thanks to improved access, so your servicing time is reduced. Longer service intervals mean less downtime and more productive hours on site. Let's do the work!

"IN MY OPINION, THE GREATEST ADVANTAGE OF MINI CAT EXCAVATORS LIES IN THEIR EFFICIENCY AND SPEED"

INSPIRED BY DARIO BRALIĆ – BRALIĆ GRADNJA D.O.O.



ENHANCED OPTIONS FOR IMPROVED COMFORT, SAFETY AND PRODUCTIVITY



SCREW TO CONNECT QUICK DISCONNECT KITS FOR CAT® NEXT GENERATION MINI EXCAVATORS

Do you want to enhance your Cat® next generation mini excavator with improved comfort, safety or productivity features? Caterpillar offers a wide variety of field-installed aftermarket kits specially developed for Cat mini excavators.

For applications that require heavy-duty work tools, especially those that have high-pressure impulses like hammers and vibratory compactors, a Screw to Connect Quick Disconnect (QD) Kit eliminates the brinelling effect seen with standard ISO 160828 quick disconnects. They screw to connect and disconnect under pressure and have a locking sleeve which ensures the quick disconnects are fully connected preventing inadvertent disconnection – making job sites safer.

Available as field-installed kits for Cat 1.5-10 ton Mini Excavators, Screw to Connect QD Kits include:

- Male and female screw to connect set with protective caps (replaces the standard quick disconnects)
- Screw to connect disconnects are the locking style that prevents the screw from backing off
- Two sets are required for machine and attachment connections or one set for the machine side only
- Adapters may be required to complete installation

SCREW TO CONNECT QUICK DISCONNECT KITS

AVAILABLE FOR MODELS:

- 301.5
- 301.6
- 301.7 CR
- 301.8
- 302 CR
- 302.7 CR
- 303 CR
- 303.5 CR
- 304
- 305 CR
- 306 CR
- 307.5
- 308 CR
- 309 CR
- 310



Screw to Connect Quick Disconnect Kits



ENHANCED OPTIONS FOR IMPROVED COMFORT, SAFETY AND PRODUCTIVITY



COUNTERWEIGHT KITS FOR CAT® NEXT GENERATION MINI EXCAVATORS

Do you want to enhance your Cat® next generation mini excavator with improved comfort, safety or productivity features? Caterpillar offers a wide variety of field-installed aftermarket kits specially developed for Cat mini excavators.

For applications or job sites that require increased stability like heavy craning and/or swinging applications, a counterweight added to your machine provides better load balance and saves on premature bearing wear while enhancing operator safety. Available as a field-installed kit, the Cat next generation mini excavator Extra Counterweight Kit is designed to improve the operator experience and provide an option for customers to modify their existing machine to take on new and challenging tasks requiring additional stability.

KEY FEATURES

- Kit includes counterweight and hardware for easy installation
- Adds stability for enhanced safety
- Improves operator experience

Without Counterweight Kit

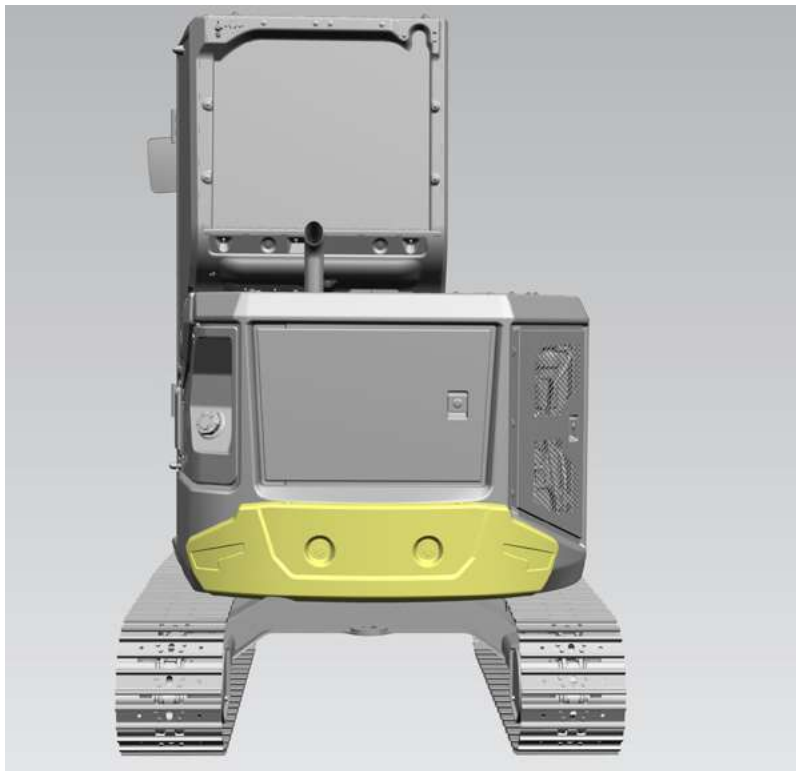


With Counterweight Kit



COUNTERWEIGHT KITS

Model	Weight
302.7 CR, 303 CR, 303.5 CR	100 kg
	250 kg
304	250 kg
305 CR	240 kg
306 CR, 308 CR, 309 CR, 310	250 kg



Counterweight Kits provide increased stability and improved safety.

ENHANCED OPTIONS FOR IMPROVED COMFORT, SAFETY AND PRODUCTIVITY



GUARD KITS FOR CAT® NEXT GENERATION MINI EXCAVATORS

Do you want to enhance your Cat® next generation mini excavator with improved comfort, safety or productivity features? Caterpillar offers a wide variety of field-installed aftermarket kits specially developed for Cat mini excavators.

For job sites that require land clearing, lifting material, demolition or any number of applications requiring an attachment, next generation mini excavator Guard Kits added to your machine provide increased protection for both the operator and your equipment. Available as field-installed kits, the Cat next generation mini excavator Guard Kits are available in a variety of configurations designed for heavy-duty jobs where additional protection is required while providing easy access to windows for cleaning, enhanced operator experience and the option to modify existing machines to take on new and challenging tasks.

GUARD KIT CONFIGURATIONS

Front Heavy-Duty Guard



Front Mesh Guard



FOPS Guard



Polycarbonate Window Guard



GUARDING KITS

Guarding Kit	Description	Model
Front Heavy-Duty Guard	"Hinged heavy-duty front guard offers easy access to windows for cleaning after demolition, land clearing and similar heavy-duty applications. Guard certified to meet ISO 10262 Level II requirements."	304, 305 CR, 306 CR, 307.5, 308 CR, 309 CR, 310
Front Mesh Guard	Hinged mesh guard offers easy-access to windows for cleaning after demolition, land clearing and similar heavy-duty applications. Guard certified to meet ISO 10262 Level I requirements.	304, 305 CR, 306 CR, 307.5, 308 CR, 309 CR, 310
FOPS Guard	Hinged FOPS guard offers easy-access to the skylight for cleaning after demolition, land clearing and similar heavy-duty applications. Guard certified to meet ISO 10262 Level II requirements.	304, 305 CR, 306 CR, 307.5, 308 CR, 309 CR, 310
Polycarbonate Window Guard	Polycarbonate front window kit replaces the factory-installed tempered glass upper and lower front windows on cab machines while maintaining full front window functionality. Designed for demolition, land clearing and similar heavy-duty applications. Requires Guard Arrangement 567-4594 or 567-4593.	304, 305 CR, 306 CR, 307.5, 308 CR, 309 CR, 310
Polycarbonate Guard	Polycarbonate full and half guards provides window protection cab machines and operator protection for canopy machines. Ideal for use in demolition, land clearing and similar heavy-duty applications. Full guards certified to meet ISO 10262 Level I requirements. Half guard is not ISO certified.	301.5, 301.6, 301.7 CR, 301.8, 302 CR, 302.7 CR, 303 CR, 303.5 CR



Guard Kits *provide increased protection for you and your equipment.*

ENHANCED OPTIONS FOR IMPROVED COMFORT, SAFETY AND PRODUCTIVITY



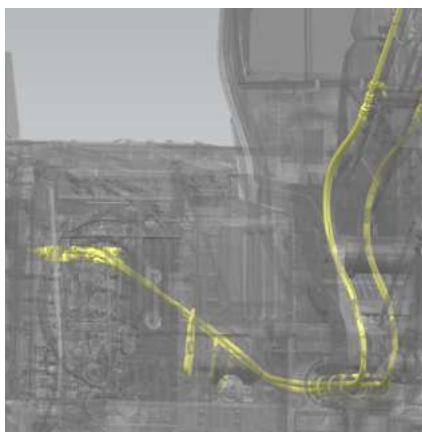
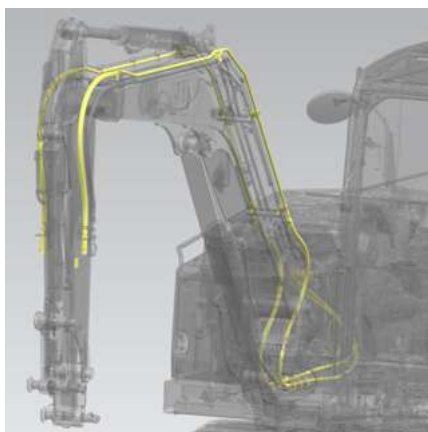
SECOND AUXILIARY KITS FOR CAT® NEXT GENERATION MINI EXCAVATORS

Do you want to enhance your Cat next generation mini excavator with improved comfort, safety or productivity features? Caterpillar offers a wide variety of field-installed aftermarket kits specially developed for Cat mini excavators.

For applications that require a shear or other attachments that require a second function, a Second Auxiliary Kit added to your machine provides the perfect blend of efficiency and durability for your rotational attachments. Available as a field-installed kit, Second Auxiliary Kits are available for all Cat next generation mini excavators. (The second auxiliary should not be confused with the 1-way and 2-way flow auxiliaries, which come standard on the machine and will run most attachments.)

SECOND AUXILIARY KITS

Model	Stick Type
301.5	Standard Stick
301.6	Standard Stick
301.7 CR	Standard Stick
301.8	Standard Stick
302 CR	Standard Stick
302.7 CR	Standard Stick
303 CR	Standard Stick
303.5 CR	Standard Stick
304	Standard Stick
	Long Stick
305 CR	Standard Stick
	Long Stick
306 CR	Standard Stick
	Long Stick
307.5	Standard Stick
308 CR	Standard Stick
	Long Stick
309 CR	Standard Stick
	Long Stick
310	Long Stick



**Second Auxiliary Kits for
Standard Stick and Long
Stick Mini Excavators**

ENHANCED OPTIONS FOR IMPROVED COMFORT, SAFETY AND PRODUCTIVITY



STEEL TRACKS WITH RUBBER PAD KITS FOR CAT® NEXT GENERATION MINI EXCAVATORS 305 CR, 306 CR AND 308 MODELS

Do you want to enhance your Cat® next generation mini excavator with improved comfort, safety or productivity features? Caterpillar offers a wide variety of field-installed aftermarket kits specially developed for Cat mini excavators.

For job sites with severe ground or weather conditions like mining, quarry, demolition, forestry, heavy construction or sites that are wet or slippery, a Steel Track with Rubber Pad Kit added to your machine provides exceptional traction especially on hills and inclines. In addition, steel tracks provide additional stability due to the extra weight on loose ground conditions or when lifting heavy loads and are less likely to be damaged by debris on the job site compared to their rubber track counterpart. The kits include removable and replaceable bolt-on rubber pads for those jobs that require protection of the ground surface, have slippery surfaces or require quieter operation than steel tracks offer.

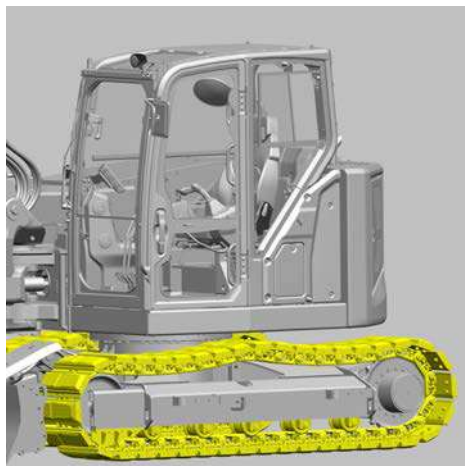
Available as field-installed kits, the kits include:

- Pair of preassembled track group steel tracks with rubber pads as a conversion from rubber belt or for service replacement for 305 CR, 306 CR and 308 mini excavator models
- The 305 CR and 306 CR kit includes front guides and hardware to complete installation
- The 308 kit includes front guides, rollers and hardware to complete installation

STEEL TRACK WITH RUBBER PAD KITS

AVAILABLE FOR MODELS:

- 305 CR
- 306 CR
- 308 CR
- 308E2 CR
- 308E CR
- 308D CR
- 308C



ENHANCED OPTIONS FOR IMPROVED COMFORT, SAFETY AND PRODUCTIVITY



TOOLBOX KIT

CAT® 304 AND 305 CR MINI EXCAVATORS

Do you want to enhance your Cat® next generation mini excavator with improved comfort, safety or productivity features? Caterpillar offers a wide variety of field-installed aftermarket kits specially developed for Cat mini excavators.

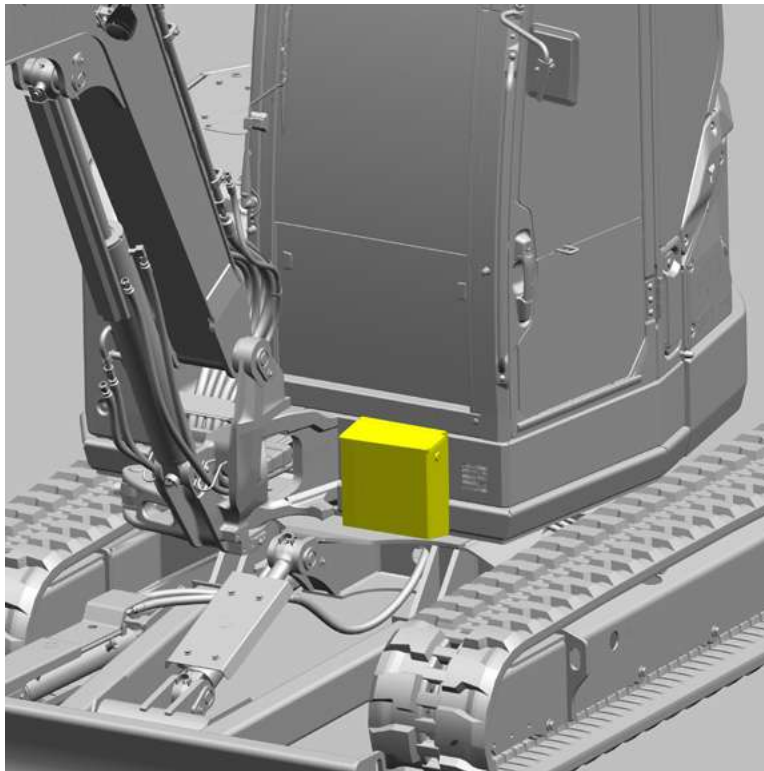
Having your tools and small accessories close at hand on the job site saves time and increases your efficiency – the Toolbox kit for Cat® 304 and 305 CR Mini Excavators provides a convenient toolbox and installation hardware to attach to the front quarter panel of the machine to keep your critical tools and accessories within easy reach. Kit also includes a lock to keep tools secure when not in use.

Available as field-installed kits, the kit includes:

- 290 mm long × 177 mm wide × 330 mm deep toolbox
- Mounting hardware
- Brackets
- Lock

TOOLBOX KIT

Model	Serial Number Prefix
304	AN4
305 CR	5G5, 5X5



FIND OUT MORE



TEKNOXGROUP SLOVENIJA d.o.o.

Pod jelšami 10 | 1290 Grosuplje
+386 1 781 82 18
contact-si@teknoxgroup.com

TEKNOXGROUP BH d.o.o.

Rajlovačka cesta bb | 171000 Sarajevo
+387 33 776 300
contact-ba@teknoxgroup.com

TEKNOXGROUP CRNA GORA D.O.O.

Bandići bb | 81410 Danilovgrad
+382 20 883 168
+382 20 690 167
contact-me@teknoxgroup.com

TEKNOXGROUP HRVATSKA d.o.o.

Zastavnice 25D, Hrvatski Leskovac | 10257 Brezovica
+385 1 240 46 11
contact-hr@teknoxgroup.com

TEKNOXGROUP KOSOVO d.o.o.

Magjistrilja Prishtinë - Ferizaj | 10500 Llapnaselle
+383 44 502 842
contact-kosovo@teknoxgroup.com

ТЕКНОКСГРУП МАКЕДОНИЈА ДООЕЛ

Ул.20 бр.32 нас.место Бразда | 1010 Чучер
Сандево Скопје
+389 2 252 72 05
contact-mk@teknoxgroup.com

TEKNOXGROUP SRBIJA d.o.o.

Autoput za Niš br.17 | 11224 Vrčin
+381 11 360 5250
contact-rs@teknoxgroup.com

 www.teknoxgroup.com

TEKNOXGROUP SHQIPERI SH.P.K.

Rruga Nationale Tirane - Durrës, km.16 |
Fshati Mucaj - Vore
+355 44 504 747
info-al@teknoxgroup.com